

Dipartimento delle finanze e dell'economia
Sezione della logistica

Via del Carmagnola 7
6500 Bellinzona
t +41 (0)91 814 77 11
f +41 (0)91 814 77 19
e-mail : dfe-sl@ti.ch
web : www.ti.ch/DFE/DR/SL

Repubblica
e Cantone
Ticino




Oggetto					Oggetto N°	File N°	Piano N°
Nuovo Liceo Cantonale di Mendrisio					E1059	104	024
Nome Piano					Mappale		Variante
G02 - SOTTOFONDI CEMENTIZI					3139 RFD		-
Nome File	E1059_A1_DE_MIX_00_var_104_41_0		Formato	Settore	Scala	Data	Modifica
Disegnato	AETC / CPZ	Data 29.03.2024	42 x 29.7	00	-	29.03.2024	0
Approvato	EB / GP	Data 29.03.2024					

Gruppo mandatario AETC – CPZ architetti associati





Architetti	AETC Architectes Urbanistes Sarl		Conte Pianetti Zanetta Architetti Sagl (resp. generale)	
	Rue Luis Favre 43		Via Nevello 7	
Ingegnere civile	Zanini Gozzi Sagl		Think Exergy SA	
	Via San Pietro Pambio 1		Corso Bello	
Ingegnere RCVS	6900 Paradiso		6850 Mendrisio	
Ing. elettrotecnico	Erisel SA			
	Via Mirasole 8			
Fisica costruzione	6500 Bellinzona			
Protezione fuoco				





PIANTA PIANO CANTINA

	SO-01	Betoncino corazzato a vista	sp. 70 mm	334 mq
	SO-02	Betoncino corazzato a vista con serpentine	sp. 90 mm	111 mq
	SO-03	Cappa cementizia collab.	sp. 30 mm	732 mq



PIANTA PIANO TERRENO

	SO-04.1	Betoncino corazzato a vista	sp. 110 mm	274 mq
	SO-04.2	Betoncino corazzato a vista con serpentine	sp. 110 mm	1584 mq
	SO-05.1	Betoncino cementizio	sp. 105 mm	418 mq
	SO-05.2	Betoncino cementizio con serpentine	sp. 105 mm	90 mq

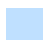

PIANTA PIANO PRIMO

	SO-06.1	Betoncino cementizio	sp. 95 mm	2437 mq
	SO-06.2	Betoncino cementizio con serpentine	sp. 95 mm	53 mq









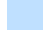
PIANTA PIANO SECONDO

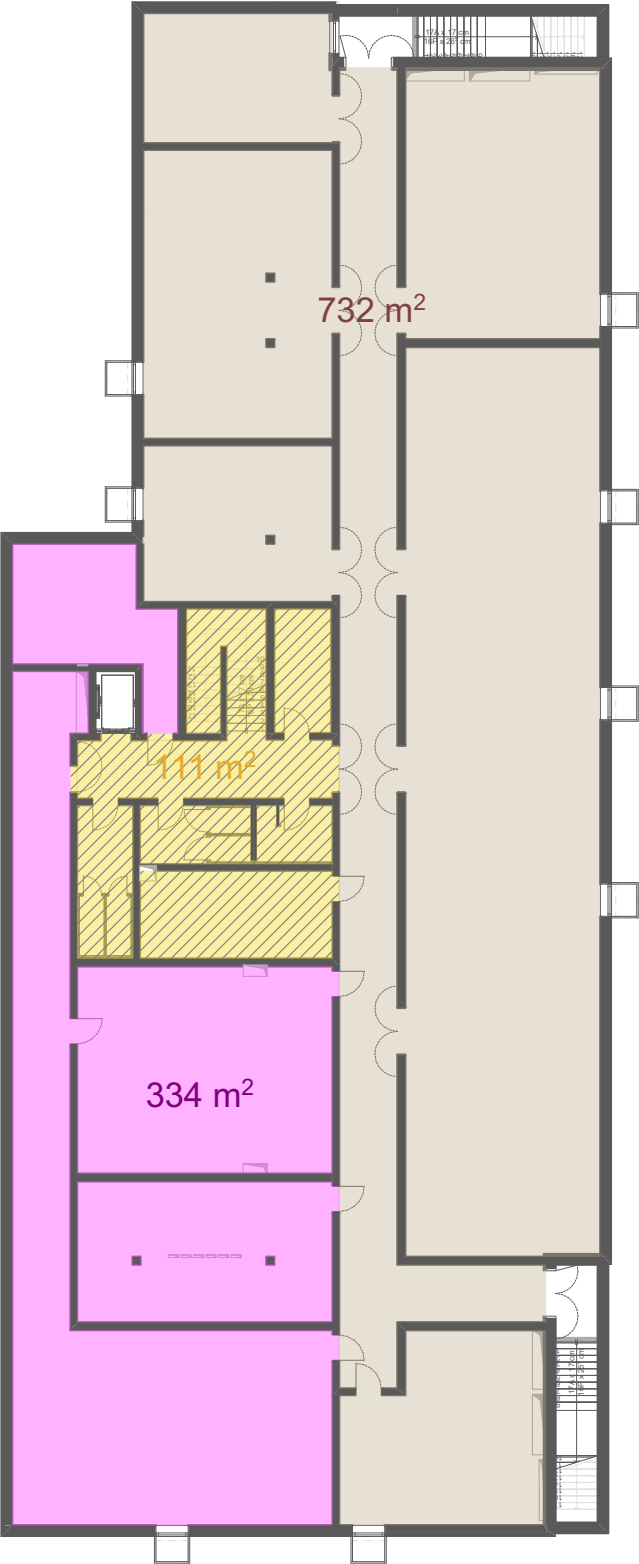
	SO-06.1	Betoncino cementizio	sp. 95 mm	2438 mq
	SO-06.2	Betoncino cementizio con serpentine	sp. 95 mm	54 mq




PIANTA PIANO TERZO

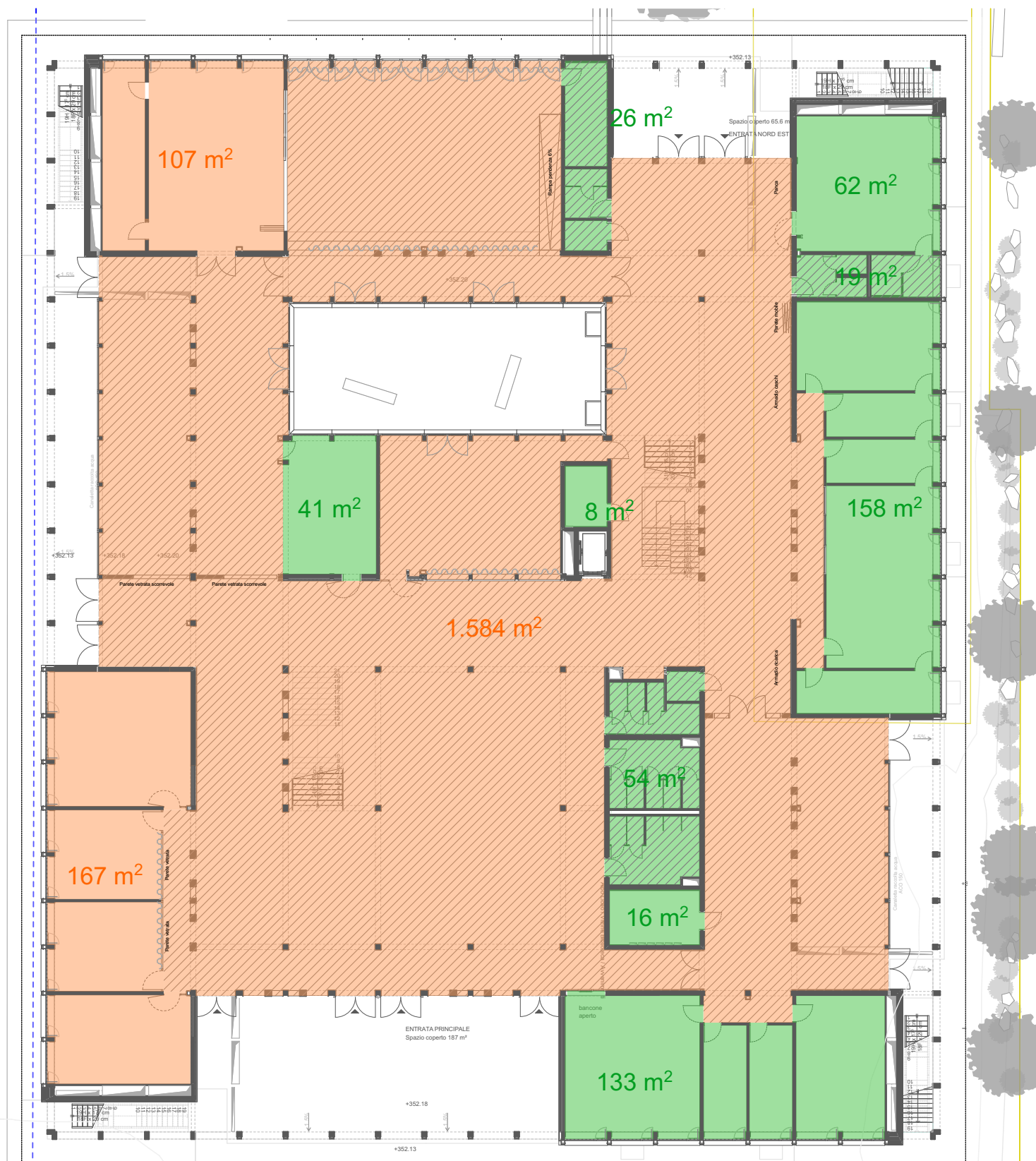
	SO-07.1	Betoncino cementizio	sp. 115 mm	2435 mq
	SO-07.2	Betoncino cementizio con serpentine	sp. 115 mm	54 mq

SUPERFICI TOTALI

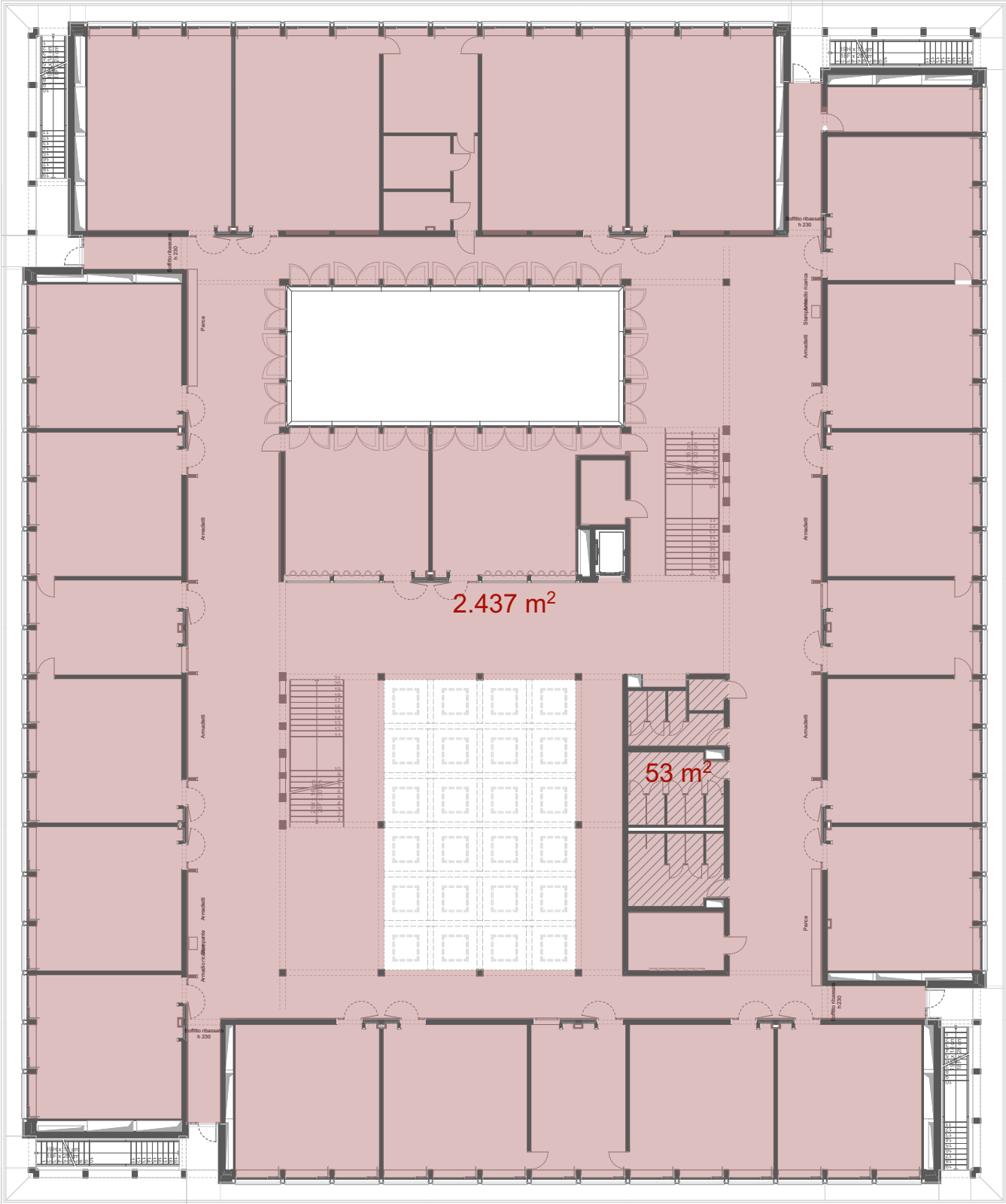
	SO-01	Betoncino corazzato a vista	sp. 70 mm	334 mq
	SO-02	Betoncino corazzato a vista con serpentine	sp. 90 mm	111 mq
	SO-03	Cappa cementizia collab.	sp. 20 mm	732 mq
	SO-04.1	Betoncino corazzato a vista	sp. 110 mm	274 mq
	SO-04.2	Betoncino corazzato a vista con serpentine	sp. 110 mm	1584 mq
	SO-05.1	Betoncino cementizio	sp. 105 mm	418 mq
	SO-05.2	Betoncino cementizio con serpentine	sp. 105 mm	90 mq
	SO-06.1	Betoncino cementizio	sp. 95 mm	4875 mq
	SO-06.2	Betoncino cementizio con serpentine	sp. 95 mm	107 mq
	SO-07.1	Betoncino cementizio	sp. 115 mm	2435 mq
	SO-07.2	Betoncino cementizio con serpentine	sp. 115 mm	54 mq



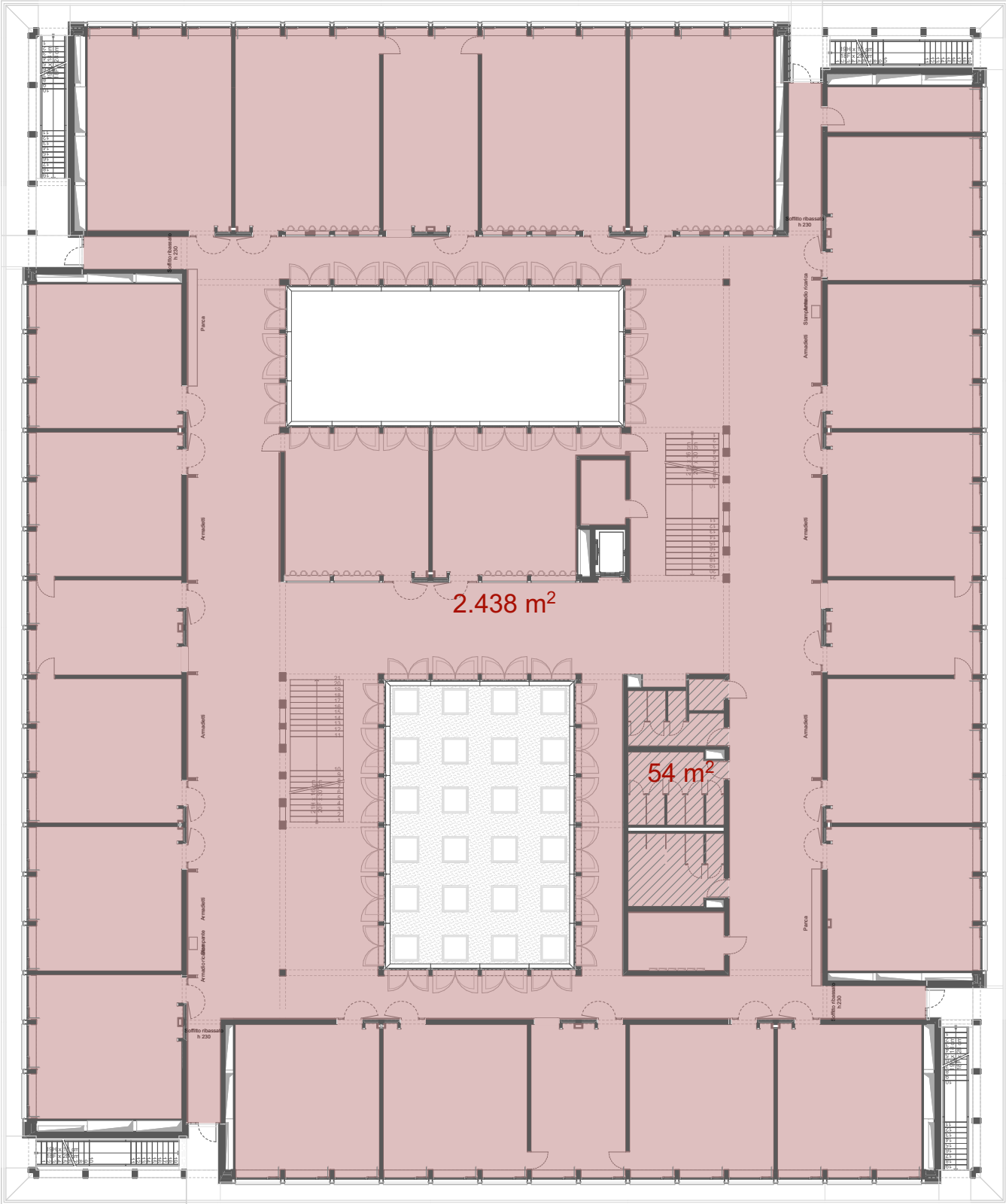
-  **SO-01 Betoncino corazzato a vista - sp. 70 mm**
trattamento antipolvere e consolidante tipo Sikafloor ProSeal W
-  **SO-02 Betoncino corazzato a vista con serpentine - sp. 90 mm**
trattamento antipolvere e consolidante tipo Sikafloor ProSeal W
-  **SO-03 Cappa cementizia collaborante - sp. 30 mm**
trattamento antipolvere e consolidante tipo Sikafloor ProSeal W



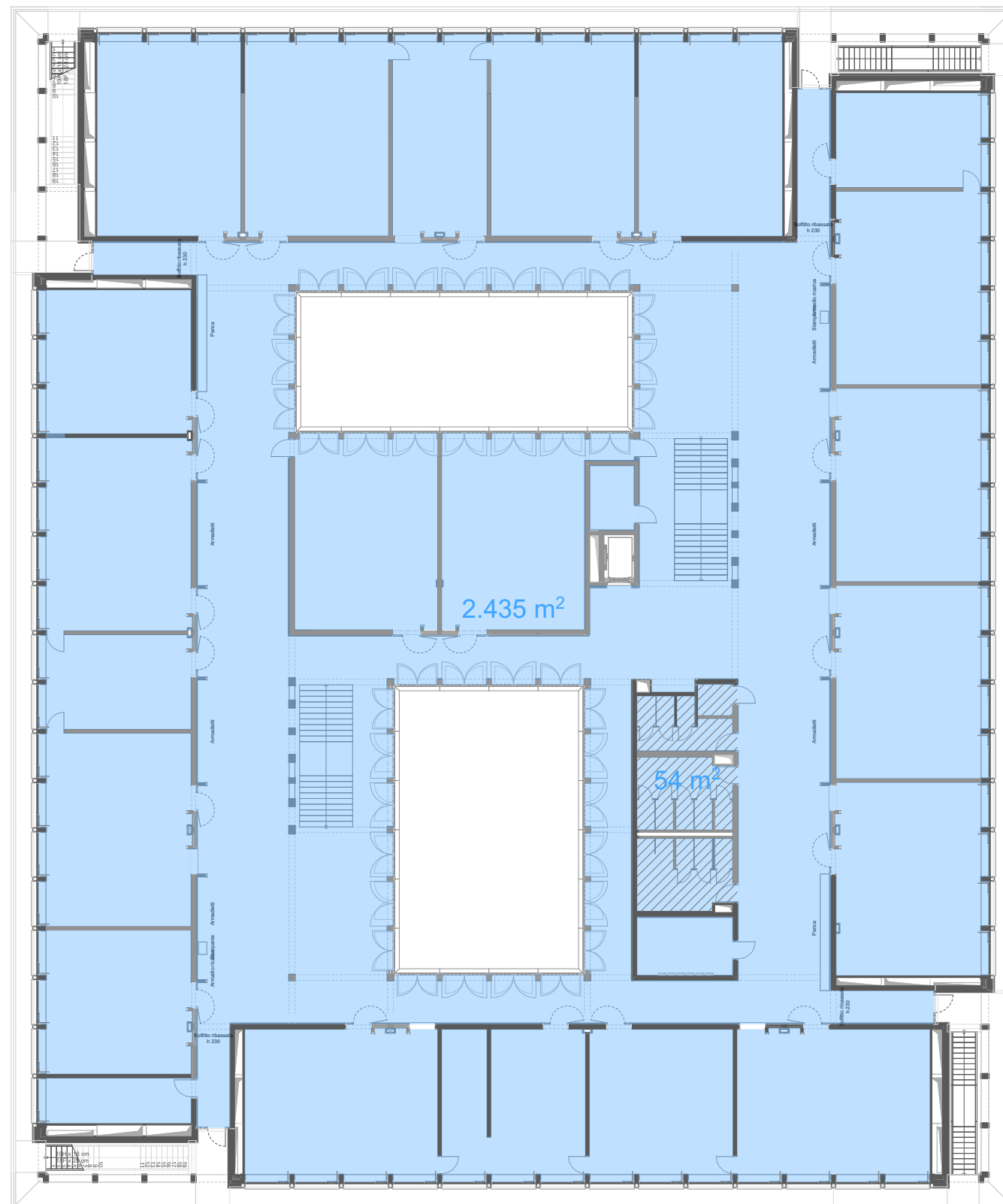
- SO-04.1 Betoncino corazzato a vista - sp. 110 mm
trattamento a base di litio o prodotti analoghi
- SO-04.2 Betoncino corazzato a vista con serpentine - sp. 110 mm
trattamento a base di litio o prodotti analoghi
- SO-05.1 Betoncino cementizio - sp. 105 mm
atto a ricevere pavimentazioni in linoleum/vinile
- SO-05.2 Betoncino cementizio con serpentine - sp. 105 mm
atto a ricevere pavimentazioni in linoleum/vinile



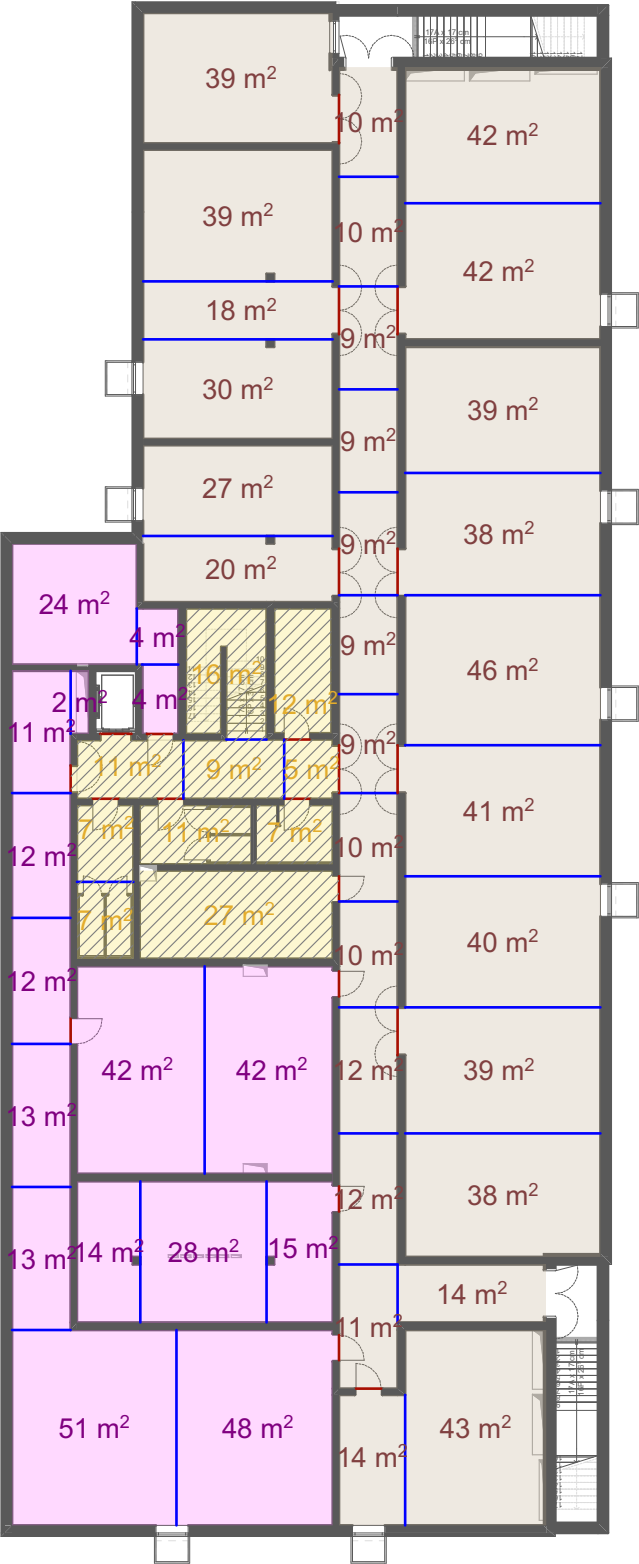
- SO-06.1 Betoncino cementizio - sp. 95 mm
atto a ricevere pavimentazioni in linoleum/vinile
- SO-06.2 Betoncino cementizio con serpentine - sp. 95 mm
atto a ricevere pavimentazioni in linoleum/vinile



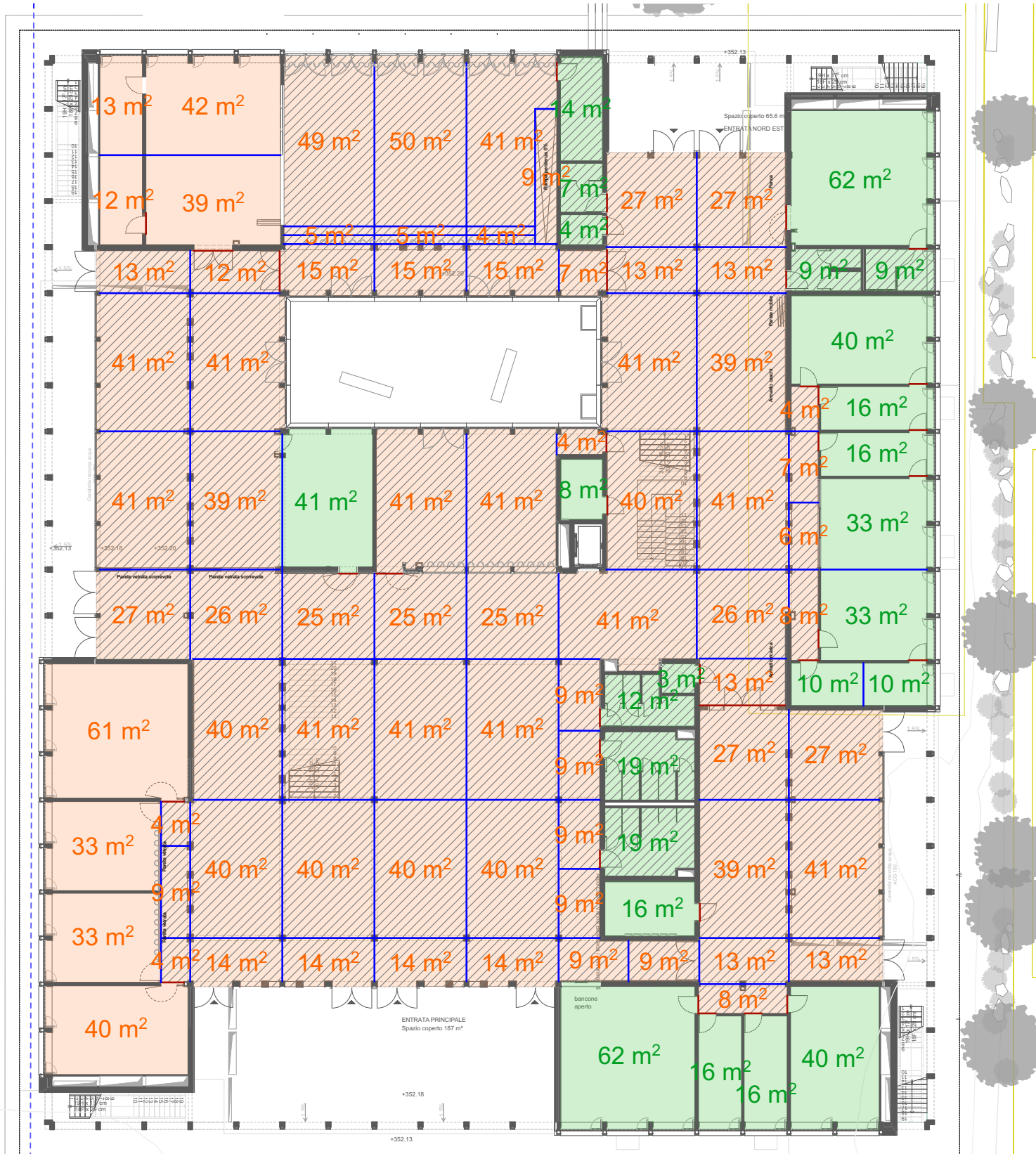
- SO-06.1 Betoncino cementizio - sp. 95 mm
atto a ricevere pavimentazioni in linoleum/vinile
- SO-06.2 Betoncino cementizio con serpentine - sp. 95 mm
atto a ricevere pavimentazioni in linoleum/vinile

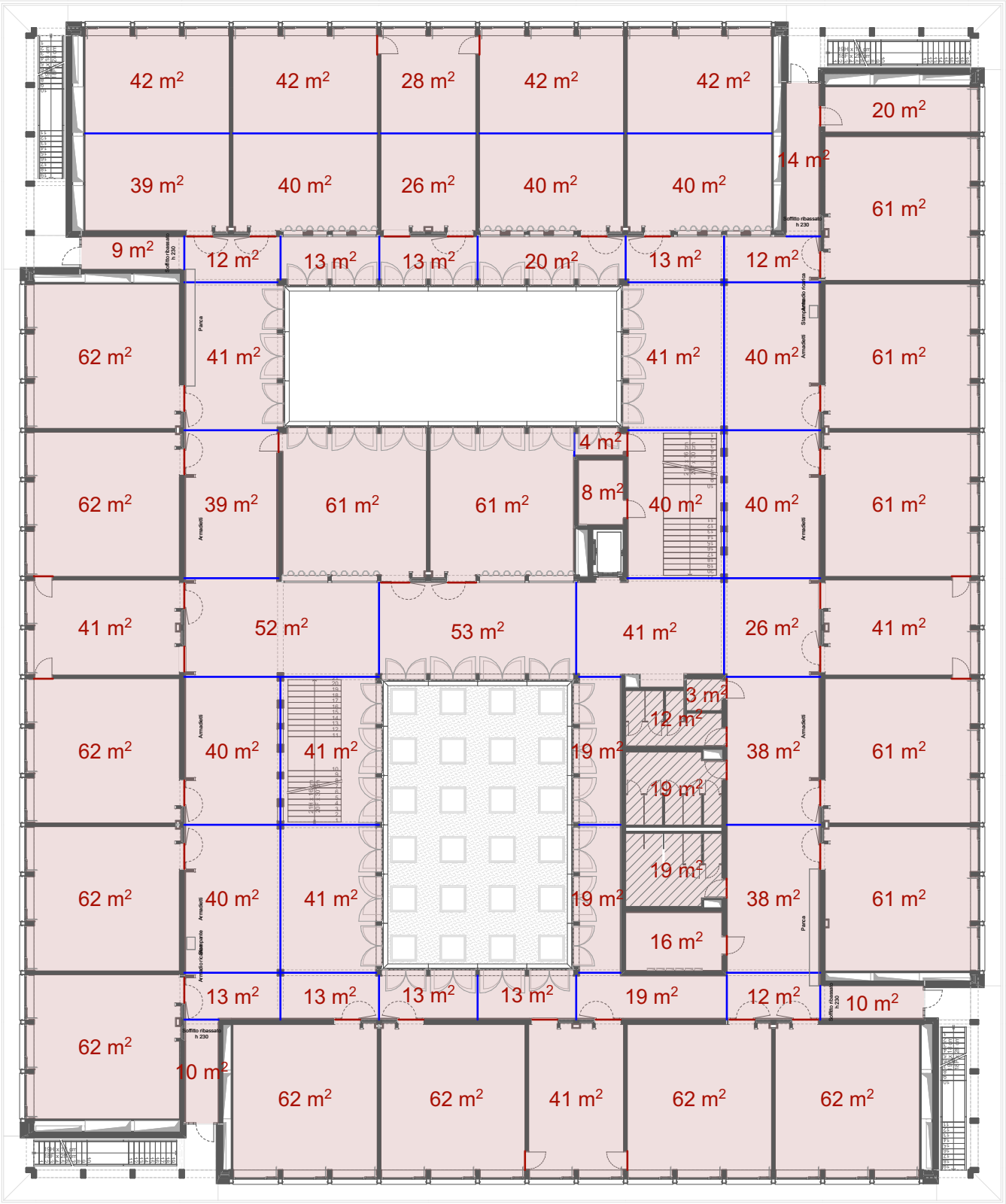


- SO-07.1 Betoncino cementizio - sp. 115 mm
atto a ricevere pavimentazioni in vinile/linoleum
- SO-07.2 Betoncino cementizio con serpentine - sp. 115 mm
atto a ricevere pavimentazioni in vinile

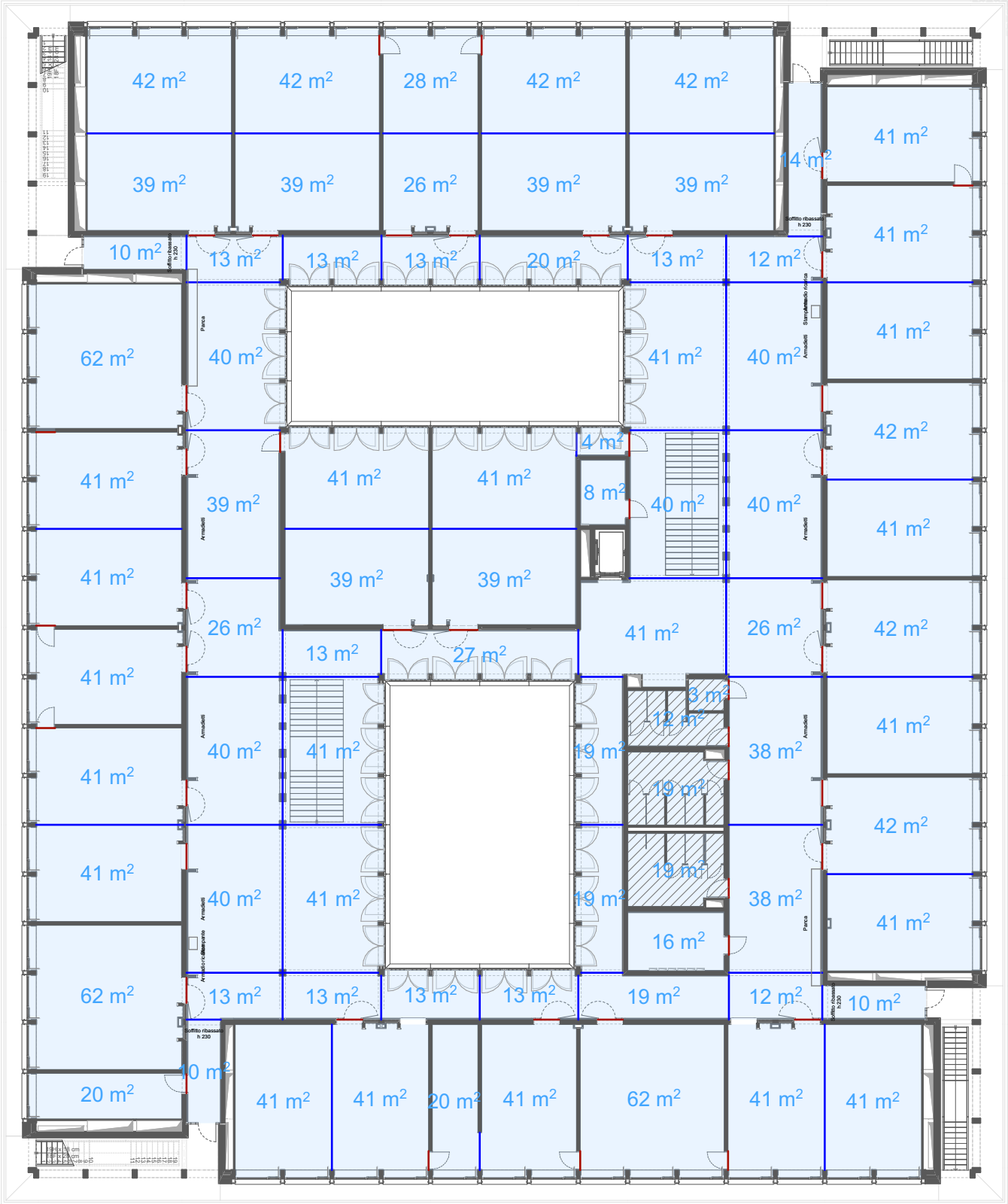


	Banda perimetrale	675 ml
	Giunti di lavoro	170 ml
	Giunti porte	30 ml





	Banda perimetrale	1300 ml
	Giunti di lavoro	225 ml
	Giunti porte	60 ml

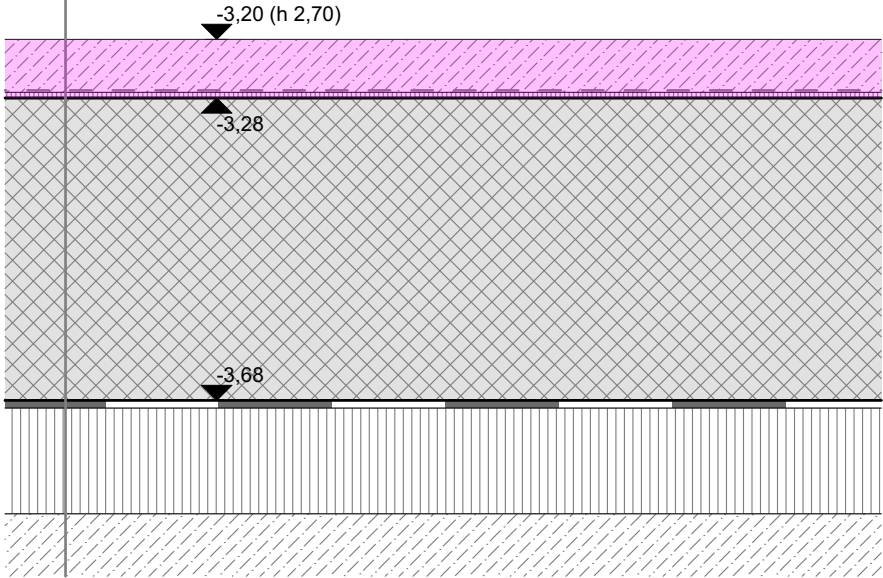


	Banda perimetrale	1275 ml
	Giunti di lavoro	300 ml
	Giunti porte	60 ml



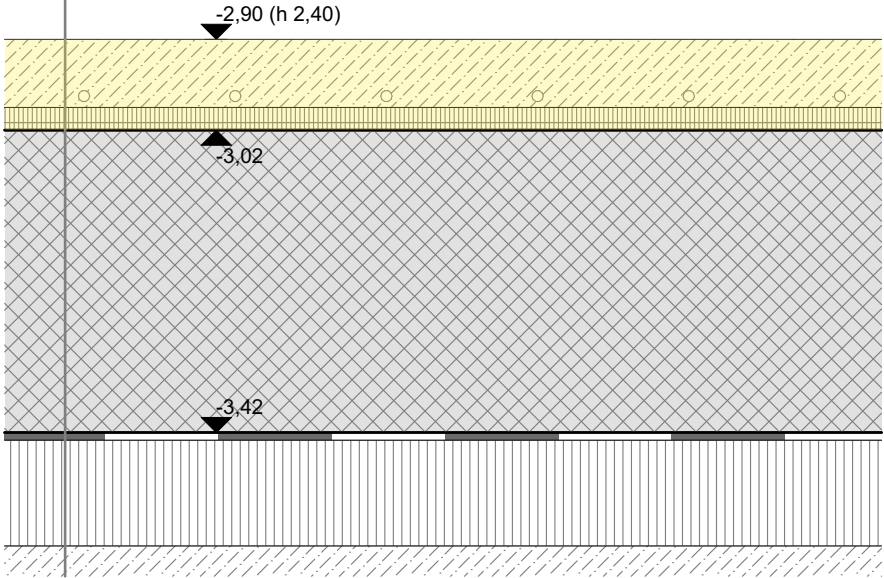
SO-01
Soletta P-1 verso terra

- | | |
|--|--------|
| - Betoncino corazzato liscio a vista | 70 mm |
| - Strato di separazione tipo foglio in PE | 0 mm |
| - Anticalpestio tipo Isolmant Biplus 10 mm+banda | 10 mm |
| - Soletta in calcestruzzo armato | var |
| - Strato di protezione e scorrimento tipo PROGUM | 10 mm |
| - Isolamento termico tipo XPS 500/700 | 140 mm |
| - Magrone | 150 mm |
| - Massicciata con drenaggi Radon | 300 mm |
| - Stuoia geotessile | 0 mm |
| - Terreno naturale | |



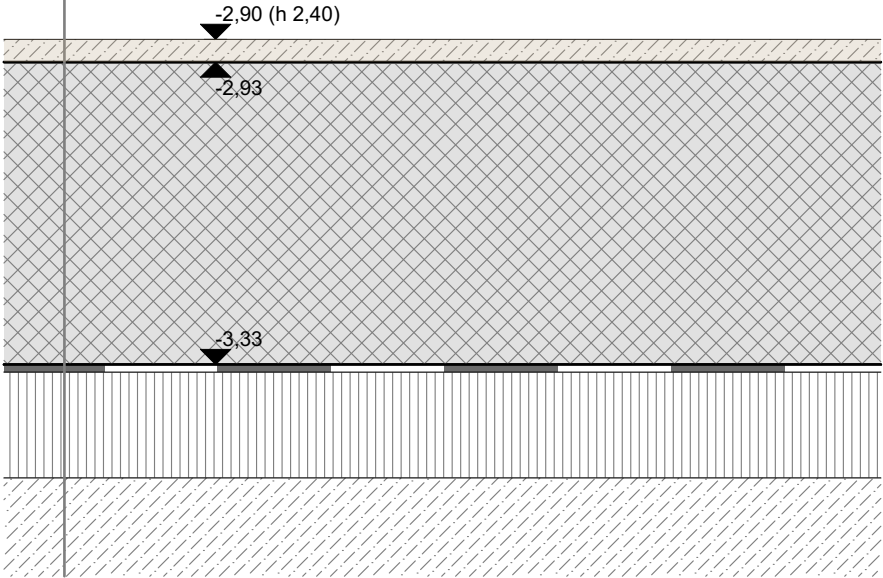
SO-02
Soletta P-1 (riscaldata) verso terra

- | | |
|--|--------|
| - Betoncino corazzato liscio a vista con serpentine | 90 mm |
| - Isolamento termico tipo Swisspor EPS Roll 150 tipo 3 | 20 mm |
| - Anticalpestio tipo Isolmant UnderSpecial 10 mm+banda | 10 mm |
| - Soletta in calcestruzzo armato | var |
| - Strato di protezione e scorrimento tipo PROGUM | 10 mm |
| - Isolamento termico tipo XPS 500/700 | 140 mm |
| - Magrone | 150 mm |
| - Massicciata con drenaggi Radon | 300 mm |
| - Stuoia geotessile | 0 mm |
| - Terreno naturale | |



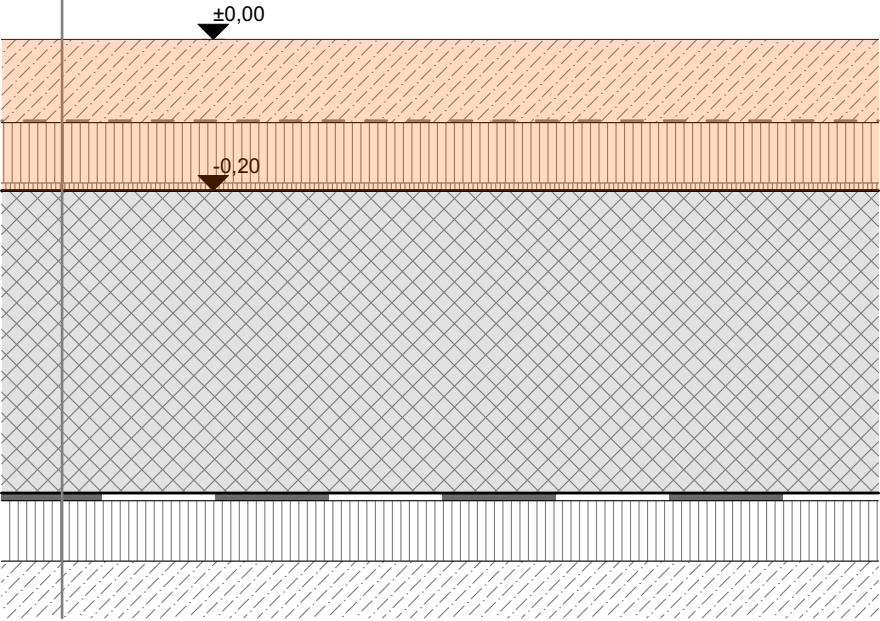
SO-03
Soletta P-1 verso terra

- | | |
|--|--------|
| - Cappa di lisciatura in cemento | 30 mm |
| - Soletta in calcestruzzo armato | var |
| - Strato di protezione e scorrimento tipo PROGUM | 10 mm |
| - Isolamento termico tipo XPS 500/700 | 140 mm |
| - Magrone | 150 mm |
| - Massicciata con drenaggi Radon | 300 mm |
| - Stuoia geotessile | 0 mm |
| - Terreno naturale | |



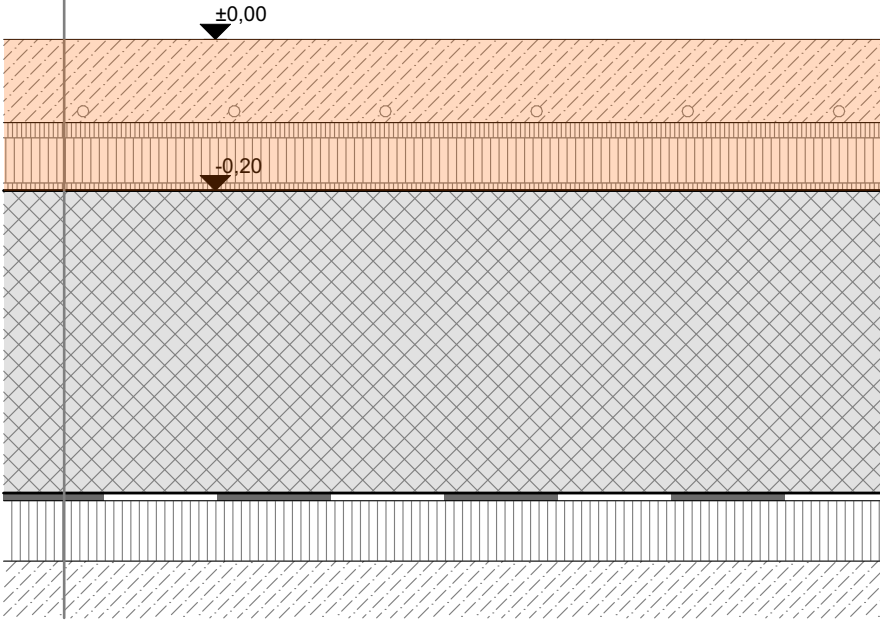
SO-04.1
Soletta PT verso terra (senza serpentine)

- Betoncino corazzato liscio a vista	110 mm
- Strato di separazione tipo foglio in PE	0 mm
- Isolamento termico tipo XPS	80 mm
- Anticalpestio tipo Isolmant UnderSpecial 10 mm+banda	10 mm
- Soletta in calcestruzzo armato	var
- Strato di protezione e scorrimento tipo PROGUM	10 mm
- Isolamento termico tipo XPS 500/700	80 mm
- Magrone	150 mm
- Massicciata con drenaggi Radon	300 mm
- Stuoia geotessile	0 mm
- Terreno naturale	



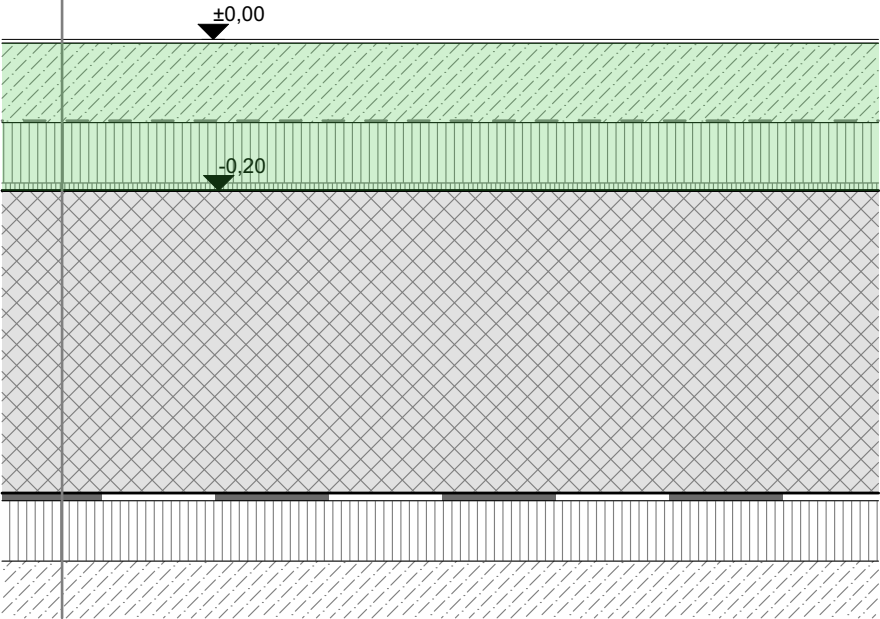
SO-04.2
Soletta PT verso terra (con serpentine)

- Betoncino corazzato liscio a vista con serpentine	110 mm
- Isolamento termico tipo Swisspor EPS Roll 150 tipo 3	20 mm
- Isolamento termico tipo XPS	60 mm
- Anticalpestio tipo Isolmant UnderSpecial 10 mm+banda	10 mm
- Soletta in calcestruzzo armato	var
- Strato di protezione e scorrimento tipo PROGUM	10 mm
- Isolamento termico XPS 500/700	80 mm
- Magrone	150 mm
- Massicciata con drenaggi Radon	300 mm
- Stuoia geotessile	0 mm
- Terreno naturale	



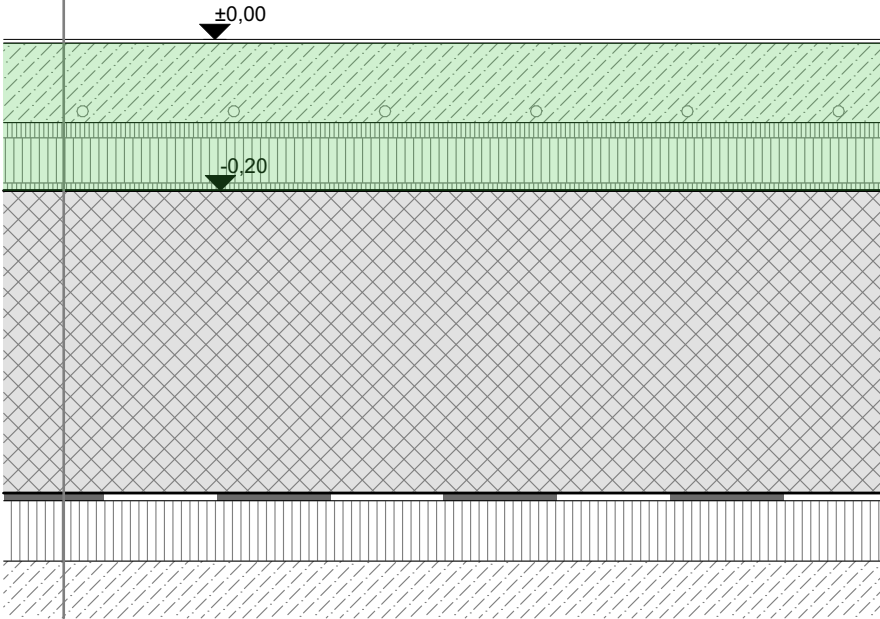
SO-05.1
Soletta PT verso terra (senza serpentine)

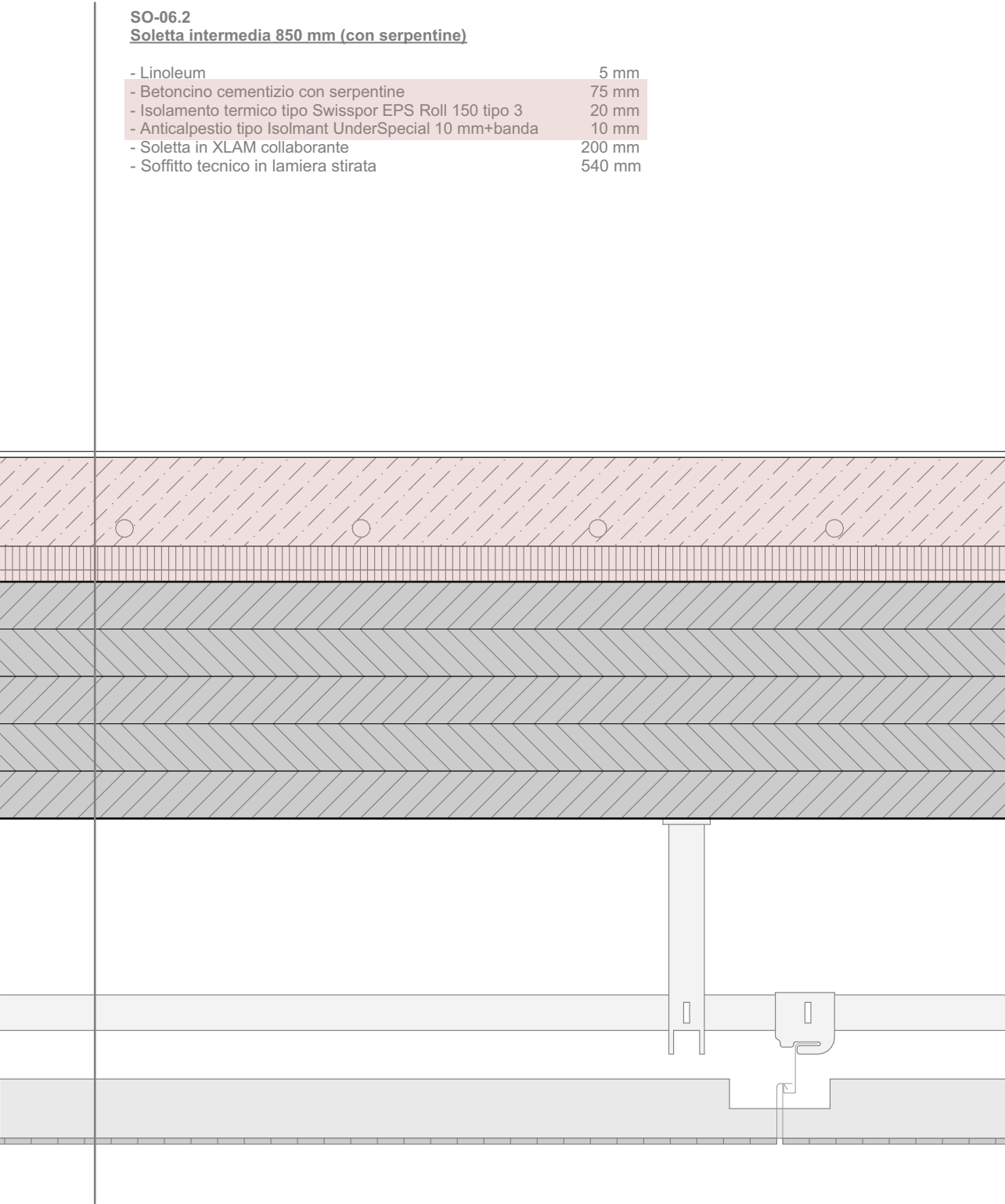
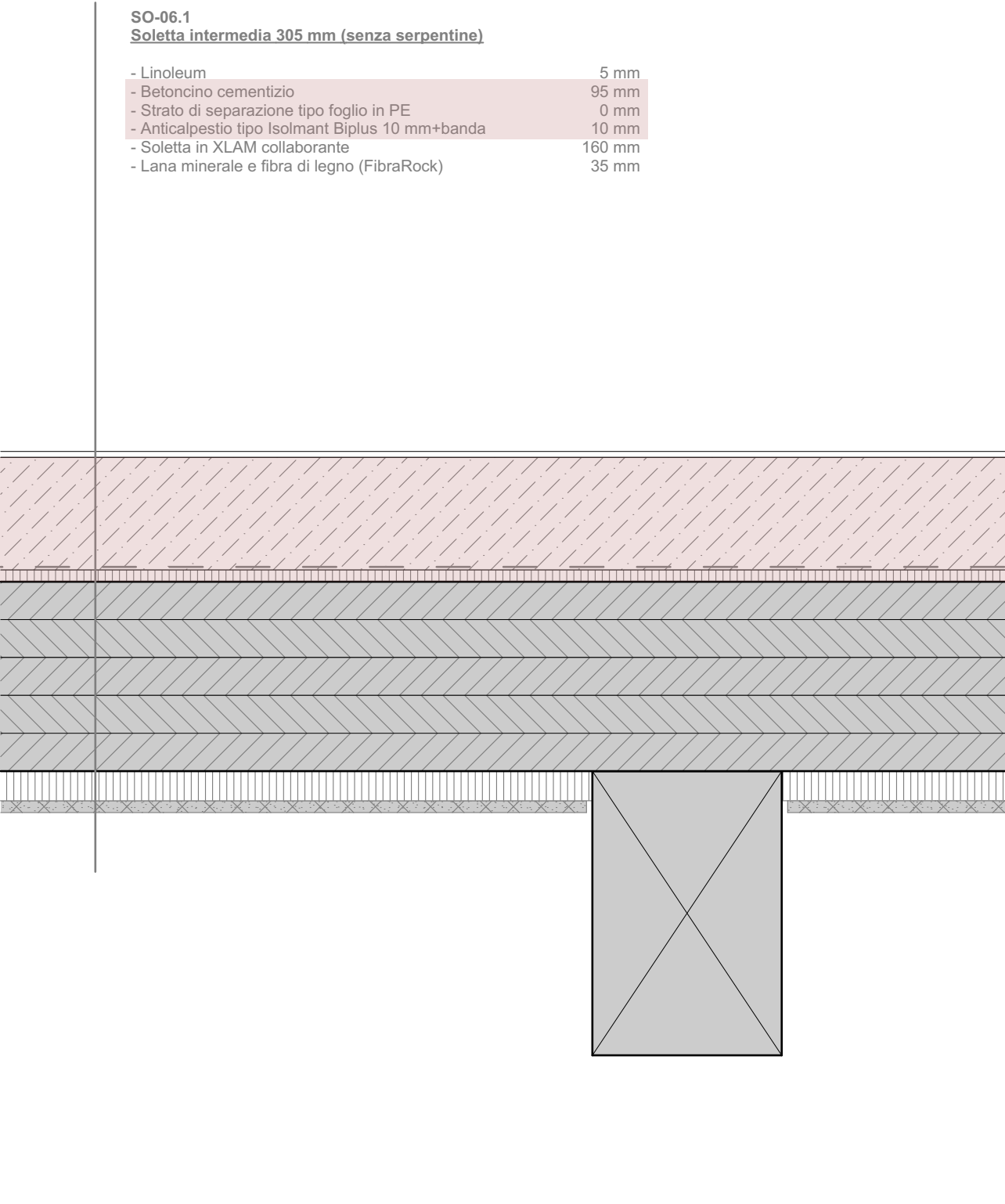
- Linoleum	5 mm
- Betoncino cementizio	105 mm
- Strato di separazione tipo foglio in PE	0 mm
- Isolamento termico tipo XPS	80 mm
- Anticalpestio tipo Isolmant UnderSpecial 10 mm+banda	10 mm
- Soletta in calcestruzzo armato	var
- Strato di protezione e scorrimento tipo PROGUM	10 mm
- Isolamento termico XPS 500/700	80 mm
- Magrone	150 mm
- Massicciata con drenaggi Radon	300 mm
- Stuoia geotessile	0 mm
- Terreno naturale	



SO-05.2
Soletta PT verso terra (con serpentine)

- Linoleum	5 mm
- Betoncino cementizio con serpentine	105 mm
- Isolamento termico tipo Swisspor EPS Roll 150 tipo 3	20 mm
- Isolamento termico tipo XPS	60 mm
- Anticalpestio tipo Isolmant UnderSpecial 10 mm+banda	10 mm
- Soletta in calcestruzzo armato	var
- Strato di protezione e scorrimento tipo PROGUM	10 mm
- Isolamento termico XPS 500/700	80 mm
- Magrone	150 mm
- Massicciata con drenaggi Radon	300 mm
- Stuoia geotessile	0 mm
- Terreno naturale	





Soletta intermedia 325 mm (senza serpentine)

Soletta intermedia 870 mm (con serpentine)

This technical cross-section diagram illustrates a multi-layered roof assembly. From top to bottom, the layers are:

- Top Layer:** A blue hatched area representing insulation or a waterproofing membrane, featuring four small circles.
- Second Layer:** A thin, light-colored layer with a vertical line pattern, likely a vapor barrier or a specific type of insulation.
- Third Layer:** A thick, gray hatched area with a diagonal pattern, representing structural insulation or a concrete slab.
- Fourth Layer:** A white, U-shaped component, possibly a metal flashing or a drainage channel, positioned on the right side.
- Fifth Layer:** A light gray horizontal band, likely a structural base or another layer of insulation.
- Sixth Layer:** A darker gray horizontal band, possibly a concrete base or another structural layer.
- Bottom Layer:** A thin, light-colored layer at the very bottom, possibly a final waterproofing or a substrate.

A vertical line on the left side of the diagram indicates a section cut. The overall structure suggests a complex roof system designed for durability and specific functional requirements like waterproofing or thermal insulation.