
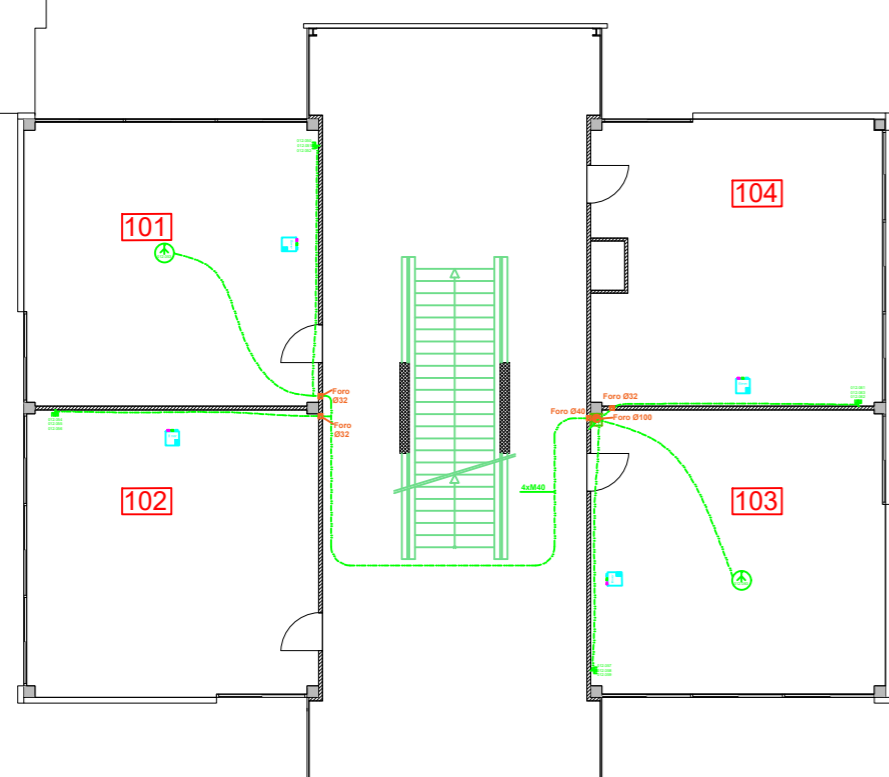


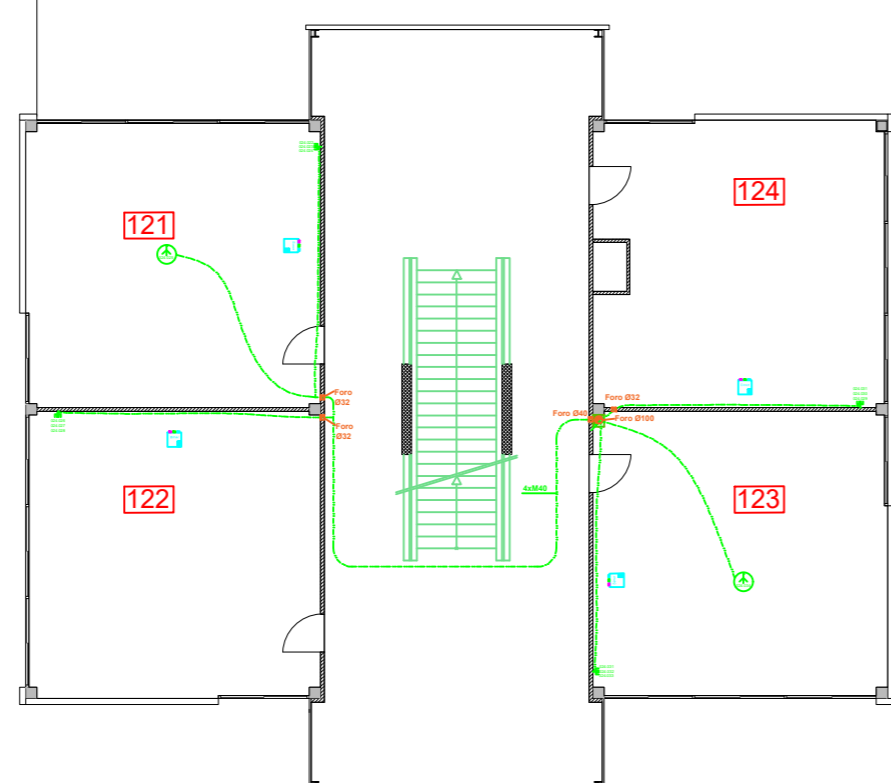
OGGETTO:	19-530 SM Giubiasco												
ARCHITETTO:	Sezione della logistica												
PIANO:	IMPIANTO ELETTRICO Corrente Debole cablaggio Primo piano												
DIM:	A1	SCALA:	1:200	DIS:	AD	VER:	GDL	APP:	GDL	DATA:	18.06.19	PLOT:	27.11.2019
FILE:	19-530_INS_A.dwg		VER:	A	PROG:	19-530	FASE:	4.41					
 STUDIO PROGETTAZIONI ELETTRICHE DE LORENZI SA C.P. 319, CH 6601 LOCARNO Tel. 091/ 760 05 55										  PIANO: 11-20			

Progetto definitivo appalto

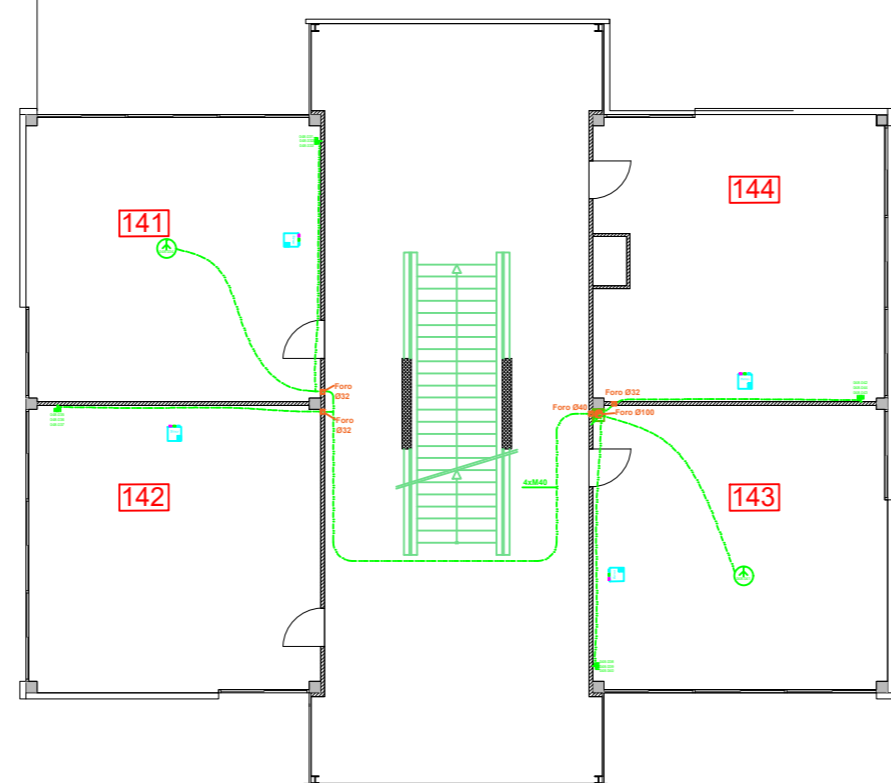
GIUBIASCO NUMERICA DEFINITIVA 11.4.2017



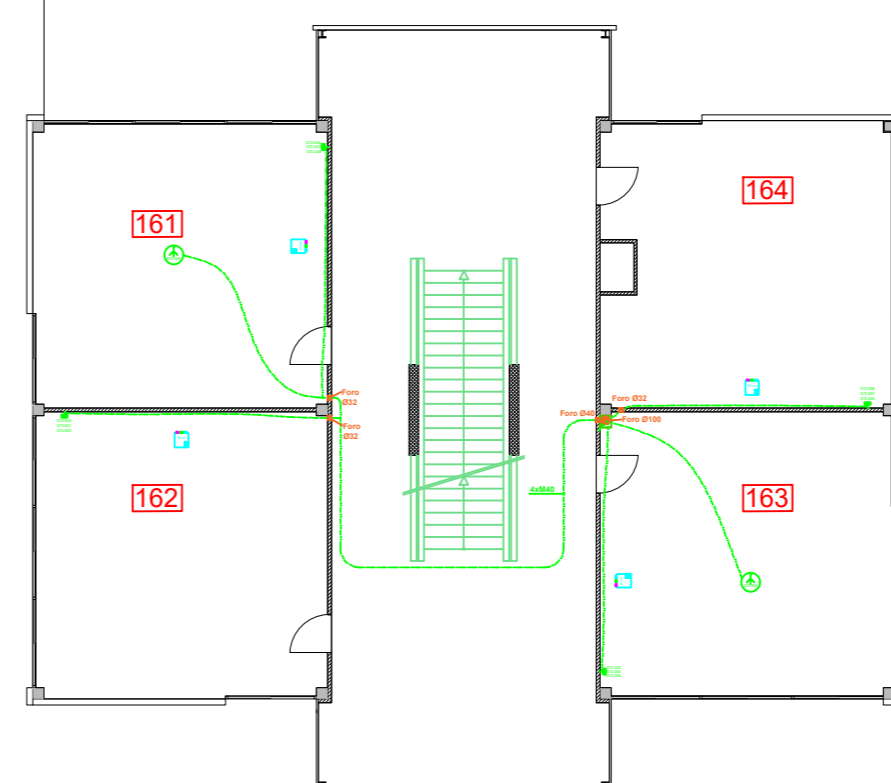
BLOCCO A



BLOCCO B



BLOCCO C



BLOCCO D