


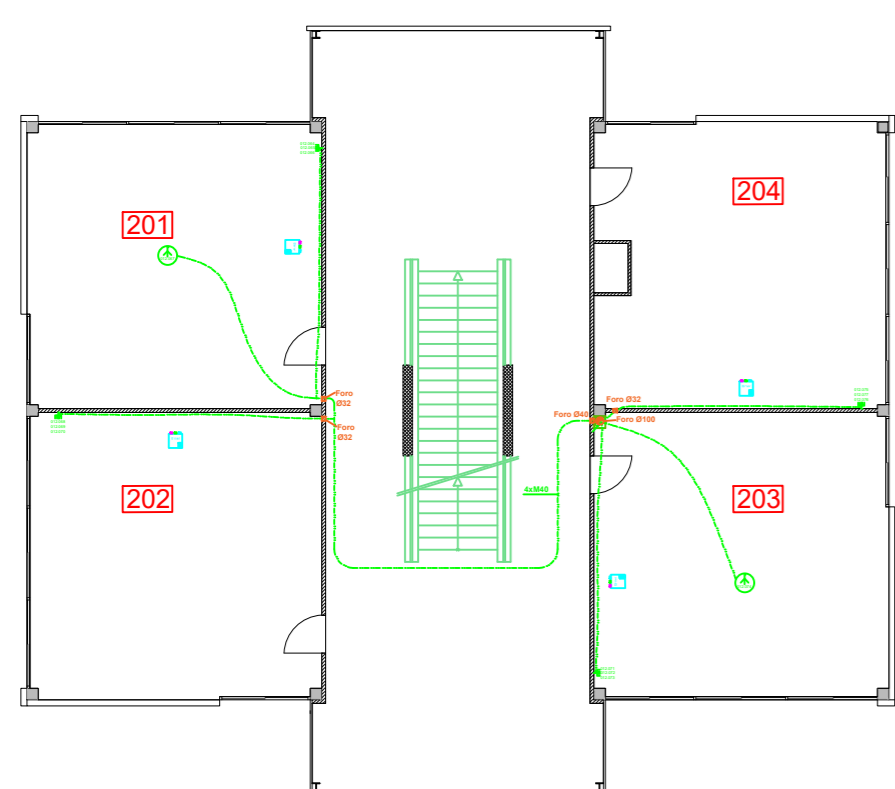


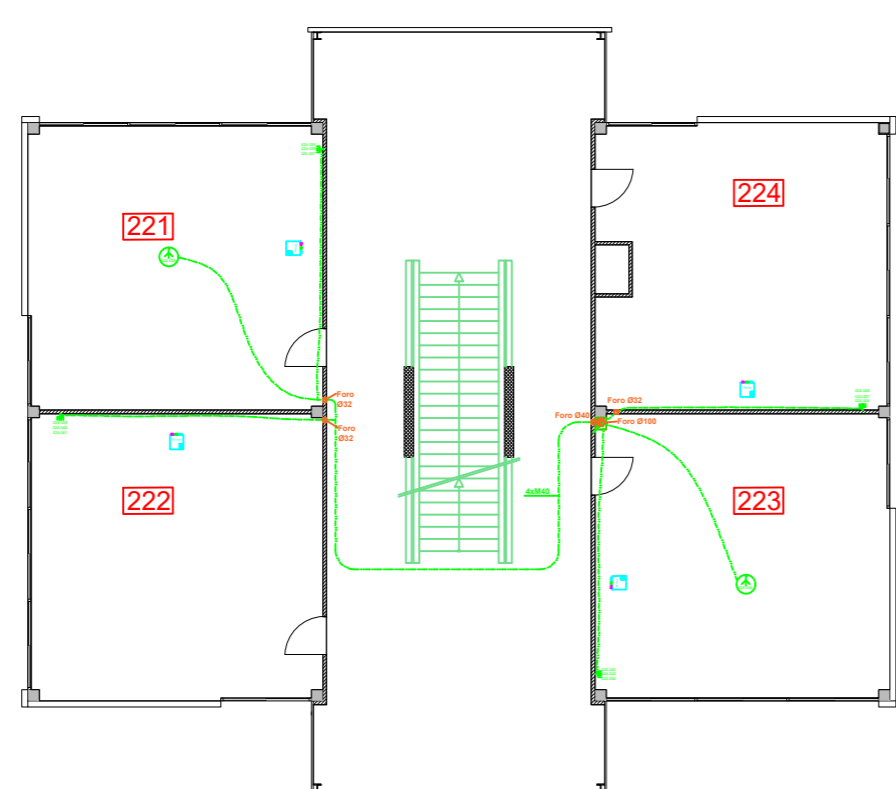
OGGETTO: 19-530 SM Giubiasco		ARCHITETTO:		COMMITTENTE: Sezione della logistica	
PIANO: IMPIANTO ELETTRICO		Corrente Debole cablaggio			
Secondo piano					
DIM: A1	SCALA: 1:200	DIS: AD	VER: GDL	APP: GDL	DATA: 18.06.19
FILE: 19-530_INS_A.dwg		VER: A	PROC: 19-530	FASE: 4.41	PLOT: 27.11.2019
 STUDIO PROGETTAZIONI ELETTRICHE DE LORENZI SA C.P. 319, CH 6601 LOCARNO Tel. 091/ 760 05 55		 		PIANO: 12-20	

Progetto definitivo appalto

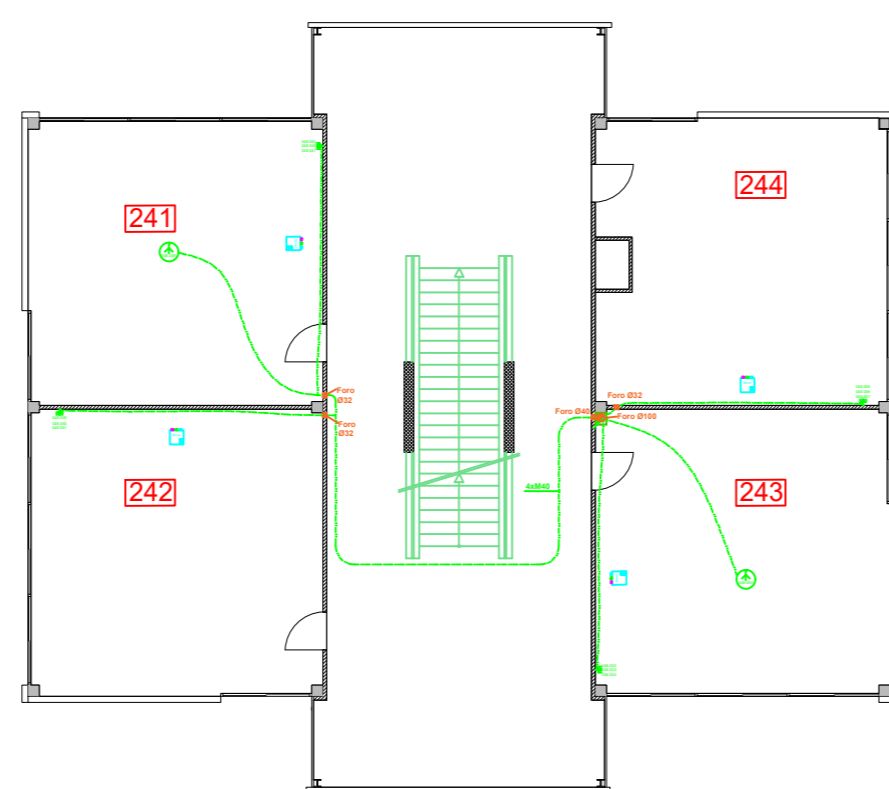
E 4122 - SCUOLA MEDIA GIUBIASCO NUMERICA DEFINITIVA 11.4.2 PIANTA SECONDO PIANO



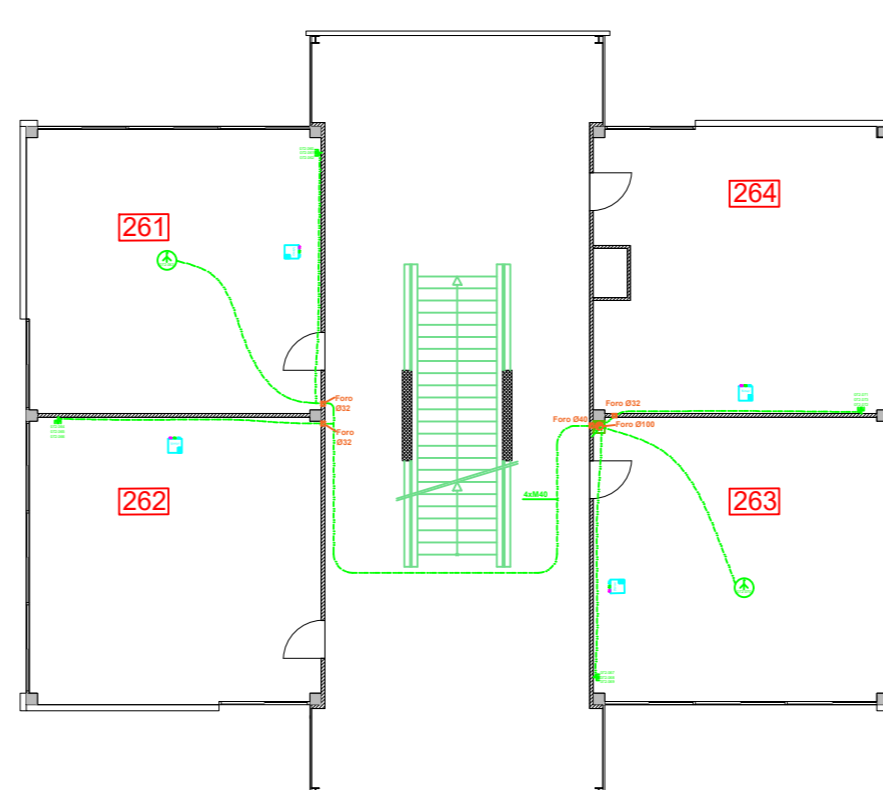
BLOCCO A



BLOCCO B



BLOCCO C



BLOCCO D