

# ALLEGATO ARCH20

Dipartimento delle finanze e dell'economia  
Sezione della logistica

Via del Carmagnola 7  
6500 Bellinzona  
t +41 (0)91 814 77 11  
f +41 (0)91 814 77 19  
e-mail : dfe-sl@ti.ch  
web : www.ti.ch/DFE/DR/SL

Repubblica  
e Cantone  
Ticino

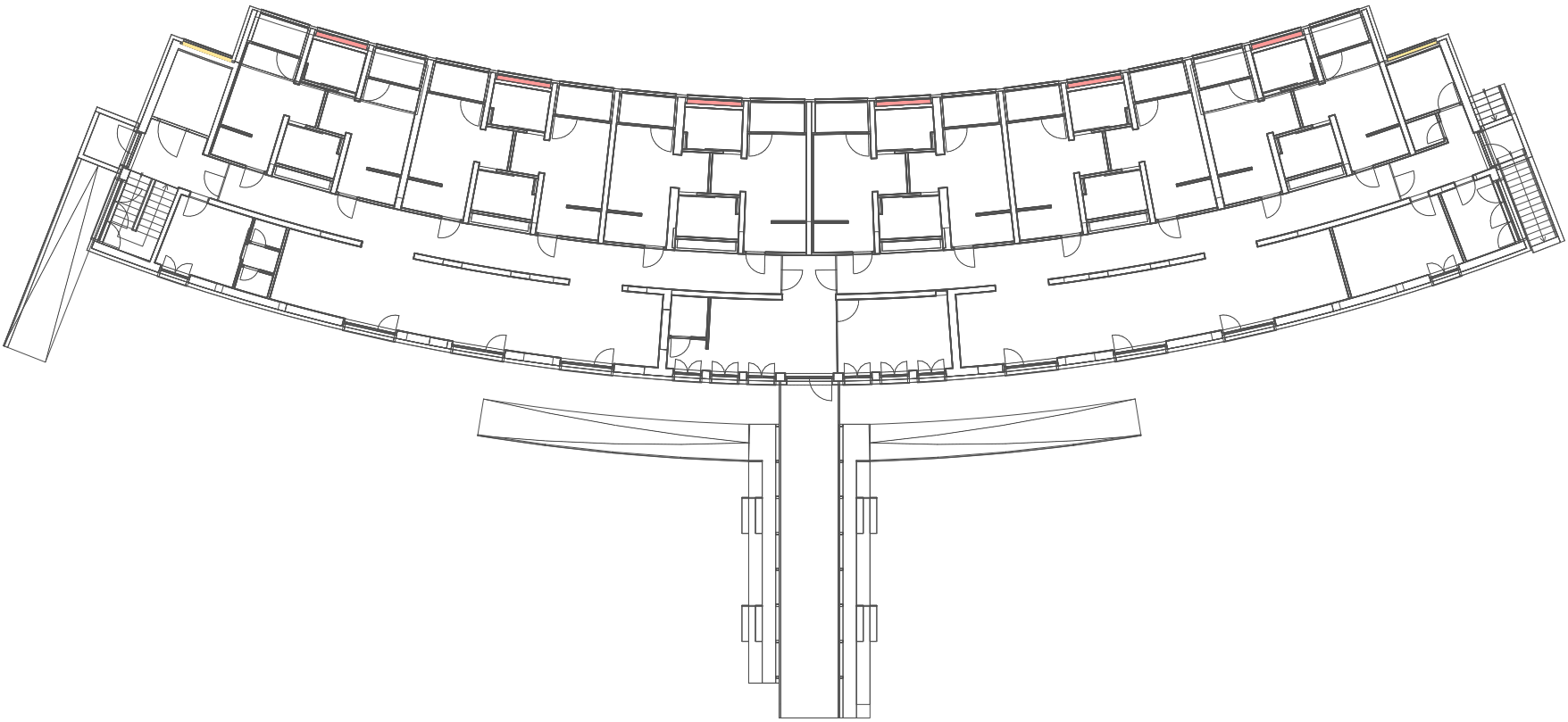
Oggetto	<b>MOTTINO - MENDRISIO</b>				Oggetto N°	File N°	Piano N°	
					<b>E1078</b>	<b>051</b>	<b>51.1</b>	
Nome Piano	<b>PIANI DI CALCOLAZIONE 2210</b>				Mappale		Variante	
					<b>1445</b>		<b>V</b>	
Nome File	E1078_A1_CH_COP_00_000_051_41_1.dwg	Formato	Settore	Scala	Data	Modifica		
Disegnato	Giulia Belloni	Data	27.01.2020	A4/A3	00	/	27.01.2020	V
Approvato	Gianluca Martinelli	Data	27.01.2020					

Gianluca Martinelli architetto  
Via San Gottardo 65  
6828 Balerna

T +41(0)91 682 69 33  
info@studio-martinelli.ch  
studio-martinelli.ch

**CPN 343 Facciate ventilate**

POS. 300.000  
Strati termoisolanti



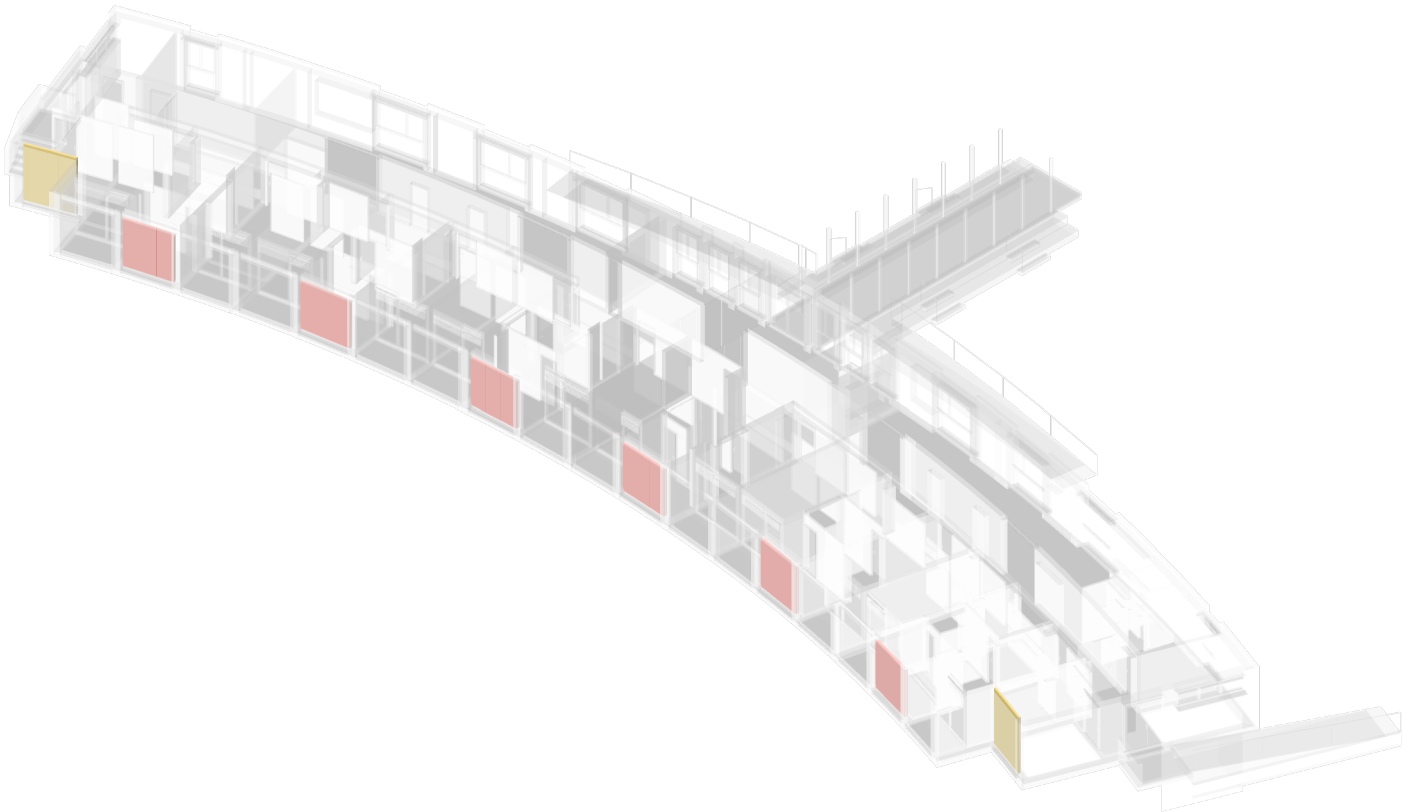
Piano terra

LEGENDA:

323.216 Isolamento termico d mm 160

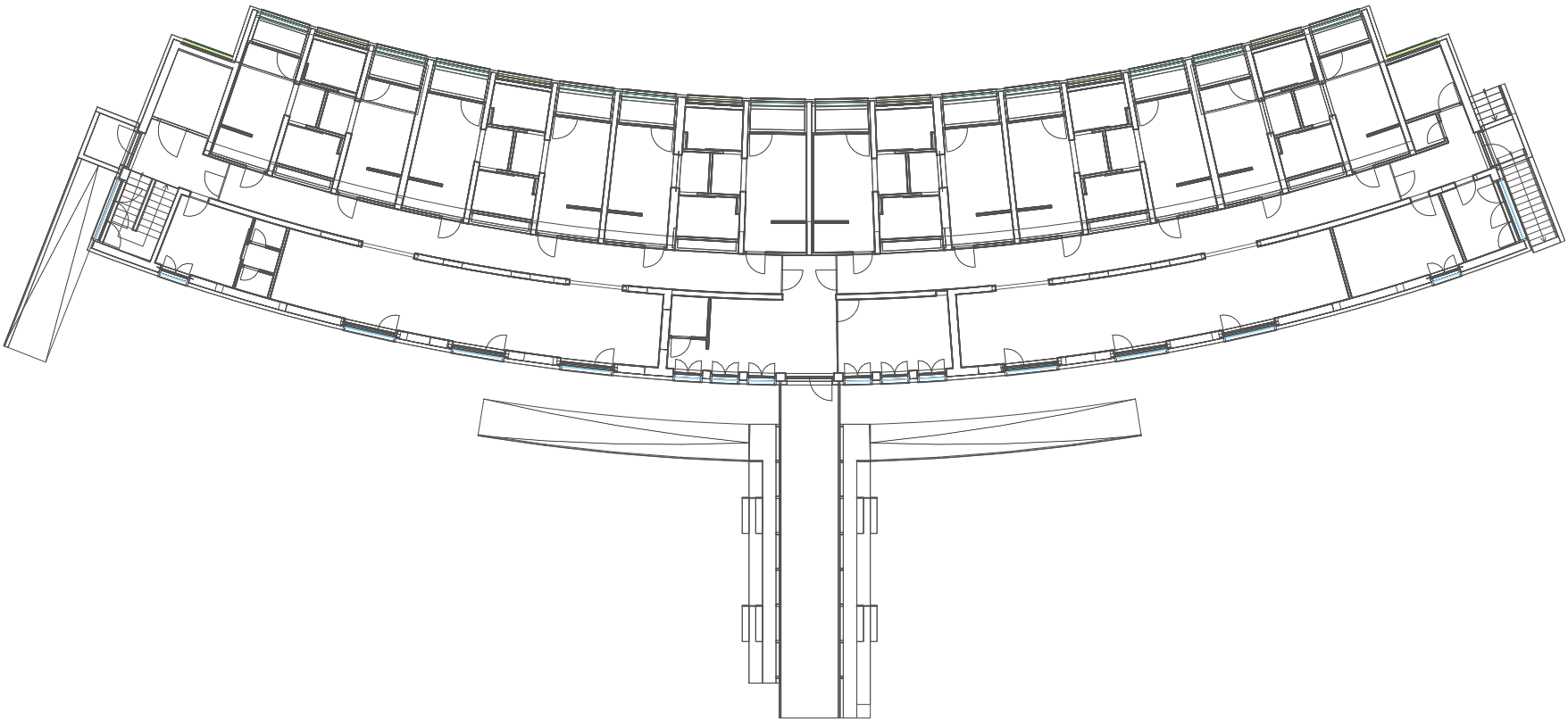


323.217 Isolamento termico d mm 100



**CPN 343 Facciate ventilate**

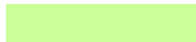
POS. 600.000  
Rivestimento di facciata in metallo



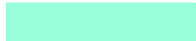
Piano terra

LEGENDA:

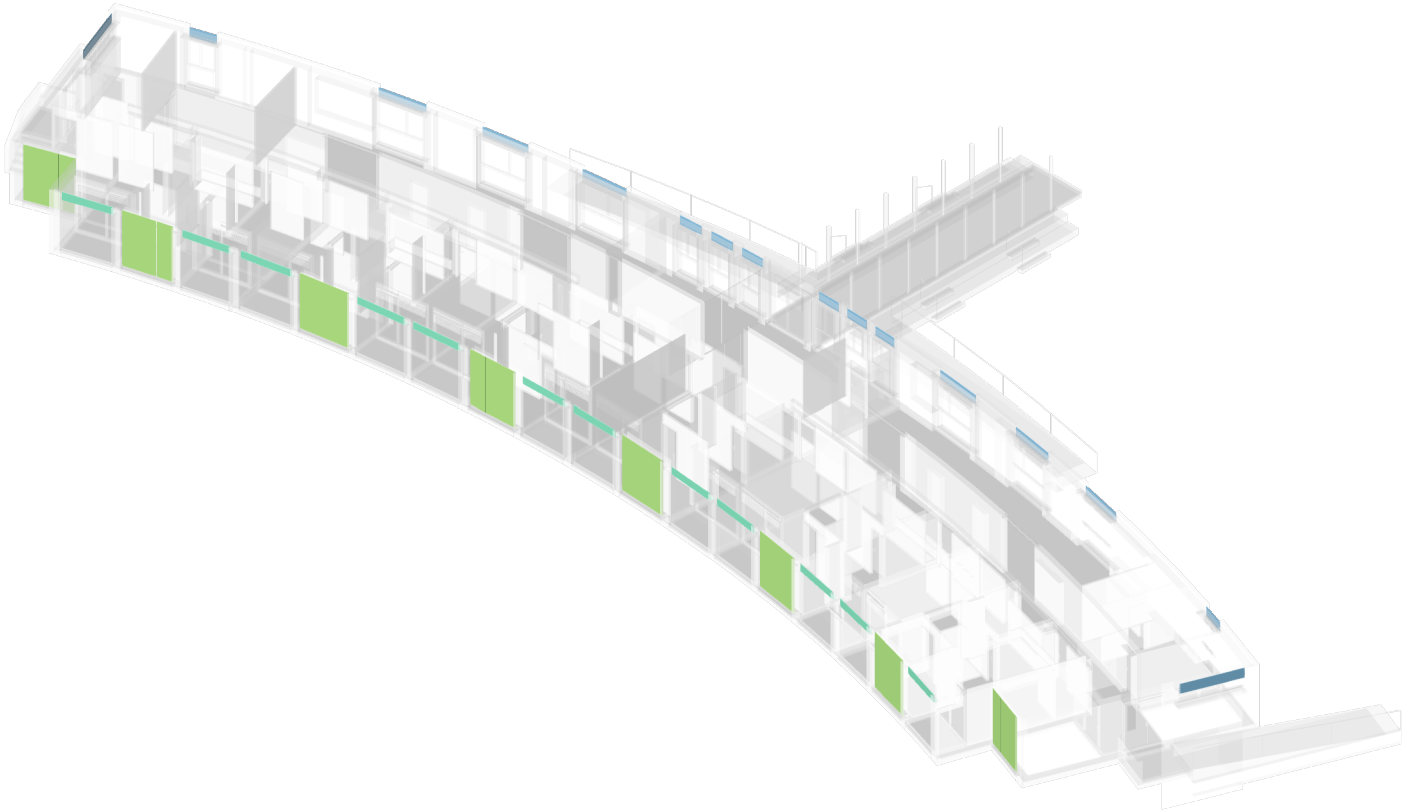
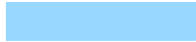
614.181 Rivestimento di facciate in lastre



672.001 Rivestimento di architravi - balconi

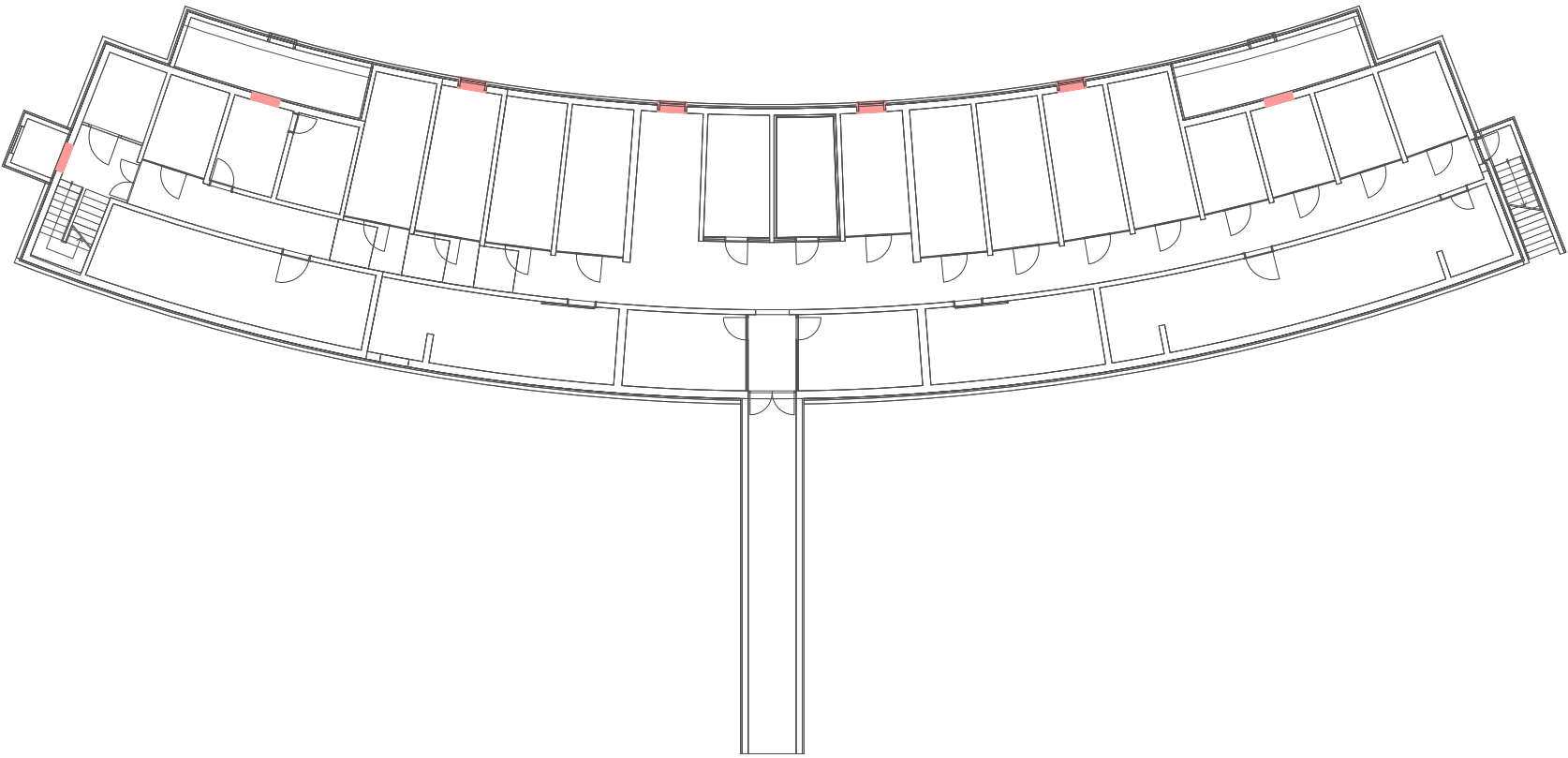


672.002 Rivestimento di architravi - finestre





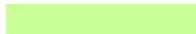
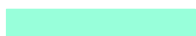
# CPN 371 Finestre

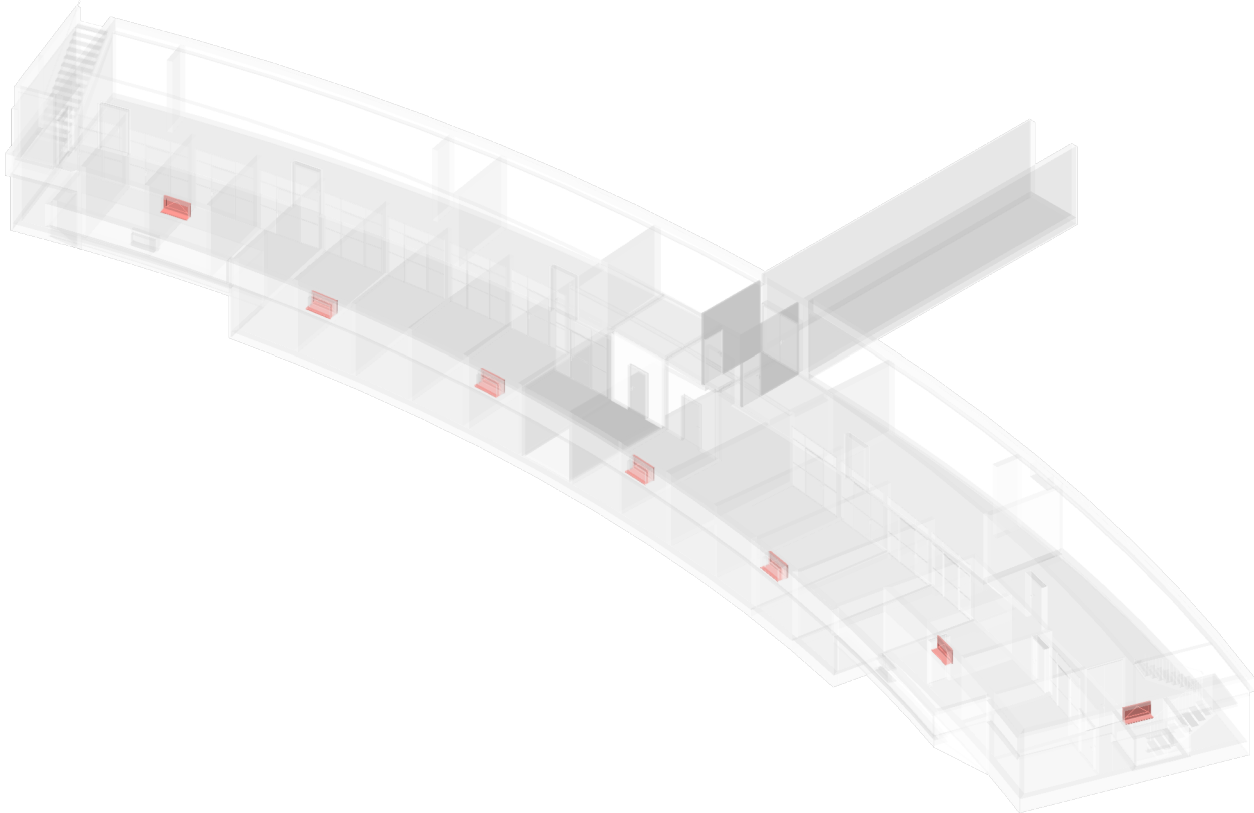
- POS. 200.000  
Finestre a un campo
- POS. 300.000  
Finestre a più campi
- POS. 500.000  
Portefinestre a più campi



Piano interrato

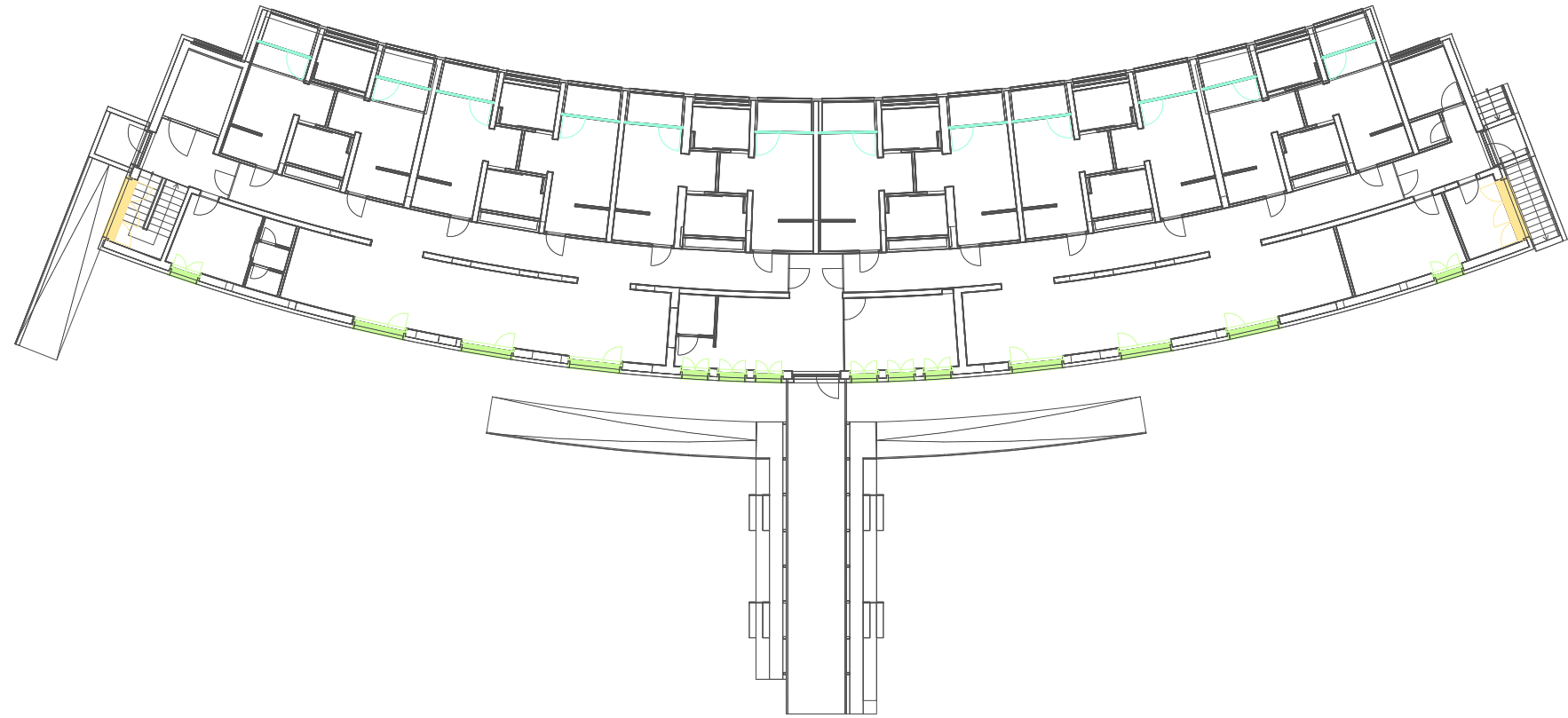
## LEGENDA:

- 212.000 Finestra a un campo, a un'anta 
- 214.000 Finestra a un campo, a 3 ante 
- 328.000 Finestra a 2 campi, con traversa intermedia 
- 511.000 Portefinestre a 2 campi, con montante intermedio 



# CPN 371 Finestre

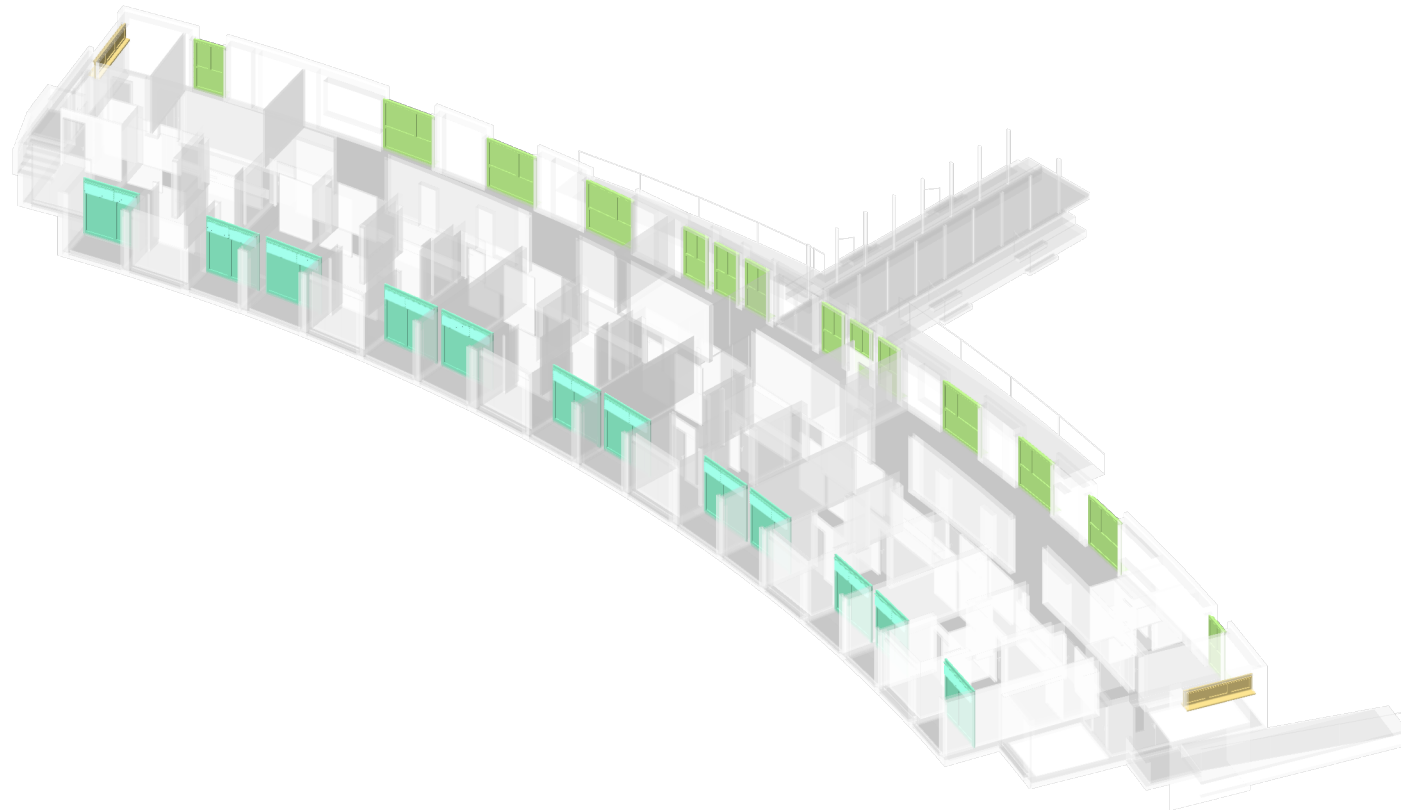
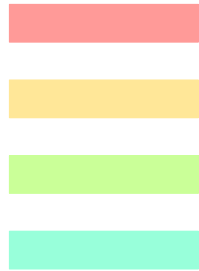
- POS. 200.000  
Finestre a un campo
- POS. 300.000  
Finestre a più campi
- POS. 500.000  
Portefinestre a più campi



Piano terra

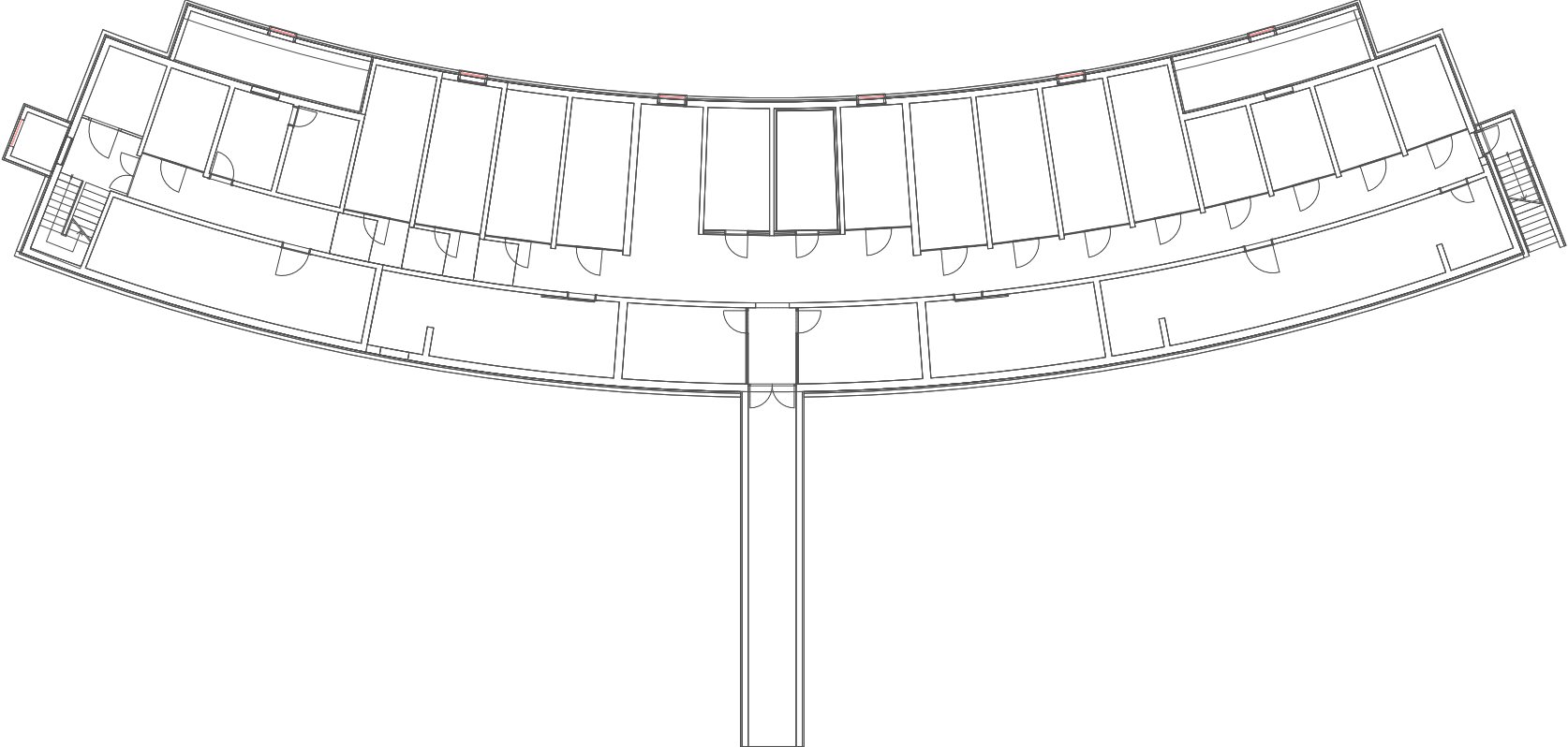
## LEGENDA:

- 212.000 Finestra a un campo, a un'anta
- 214.000 Finestra a un campo, a 3 ante
- 328.000 Finestra a 2 campi, con traversa intermedia
- 511.000 Portefinestre a 2 campi, con montante intermedio



**CPN 612** Costruzione metalliche in genere

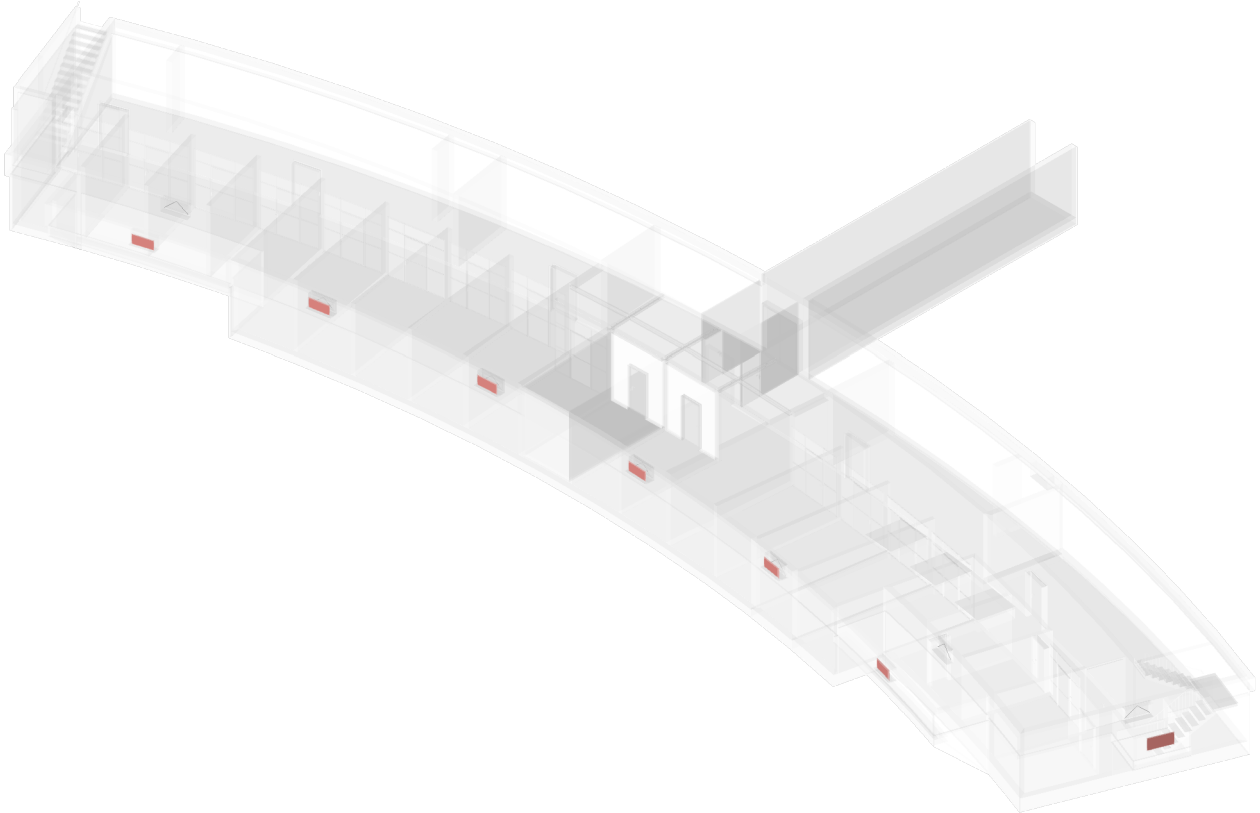
POS. 700.000  
Inferriate per finestre e porte



Piano interrato

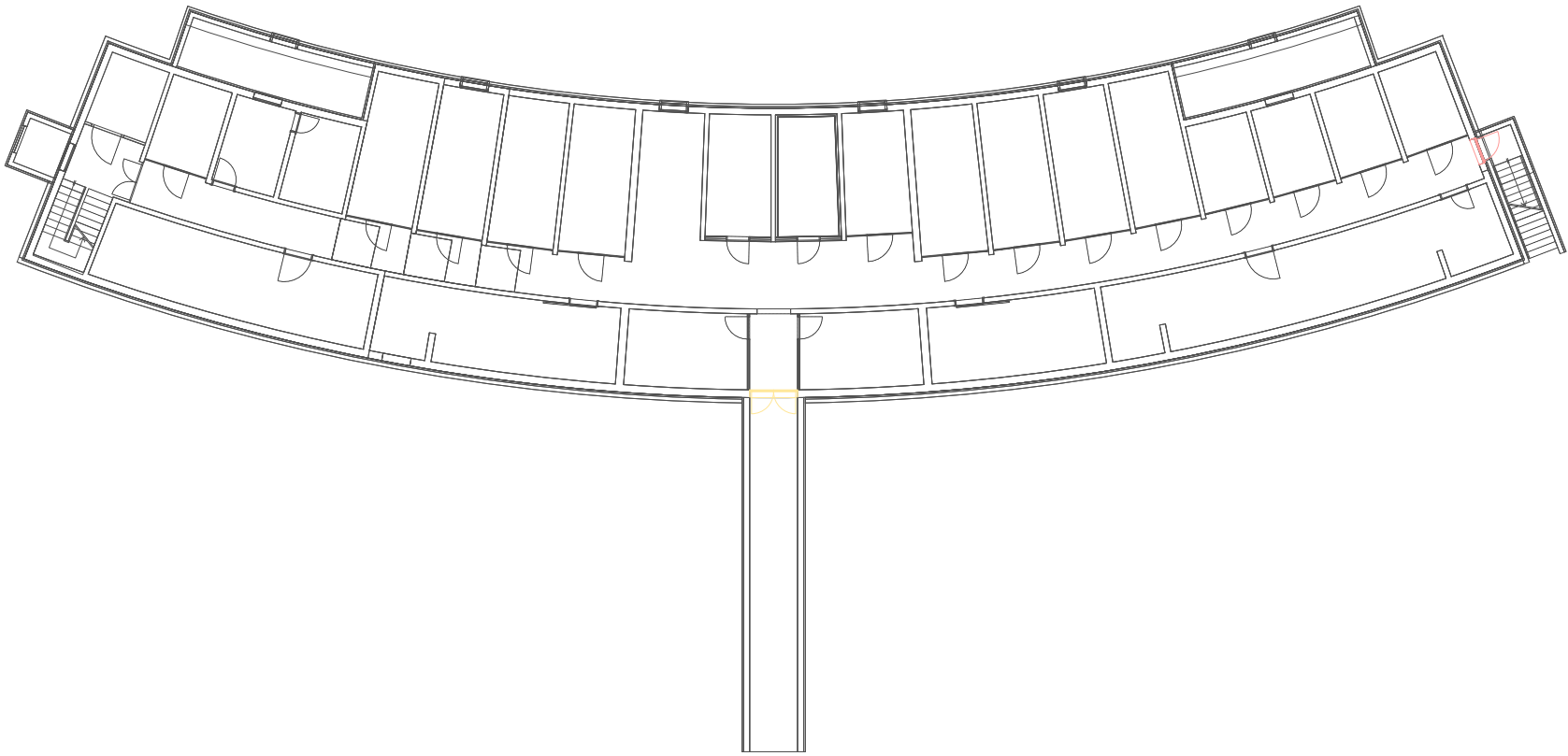
LEGENDA:

712.000 Inferriata fissa



**CPN 622 Porte**

POS. 200.000  
Porte esterne  
POS. 400.000  
Porte interne



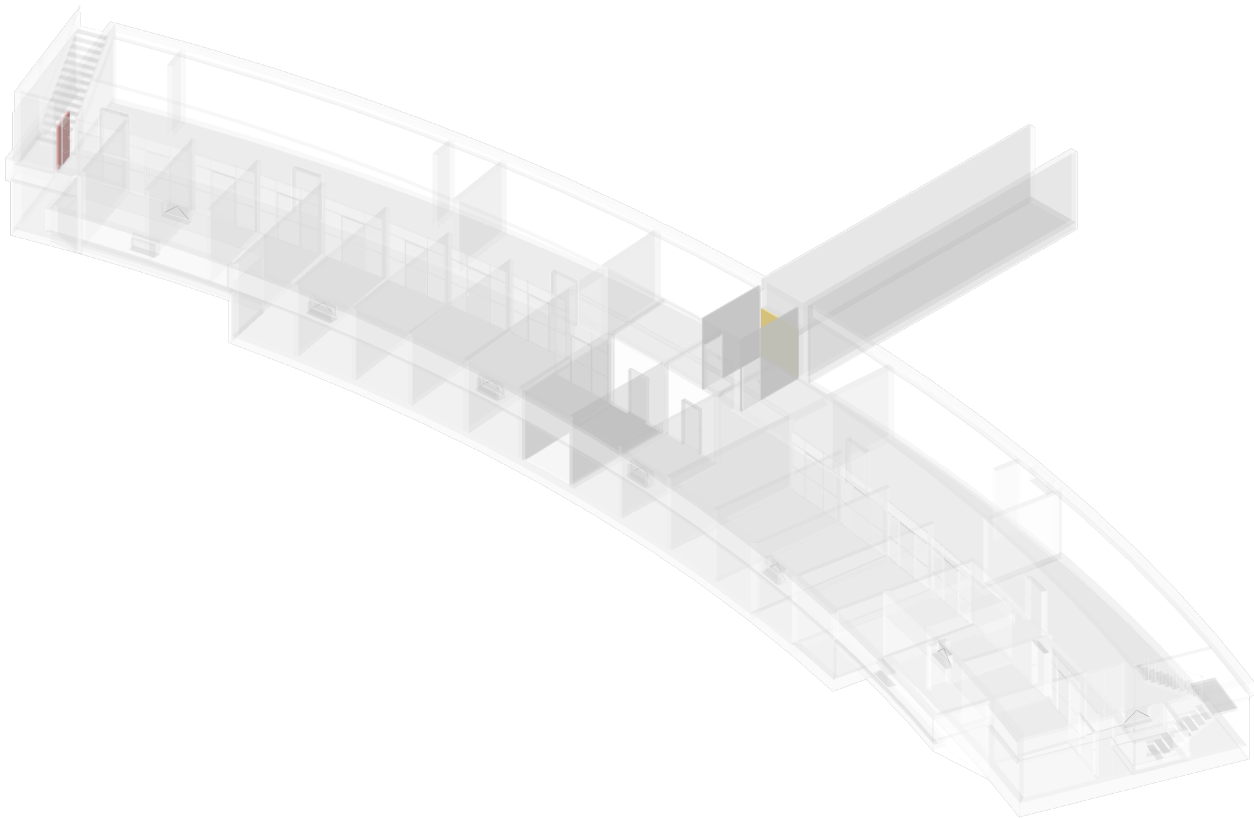
Piano interrato

LEGENDA:

231.000 Porte d'ingresso all'immobile

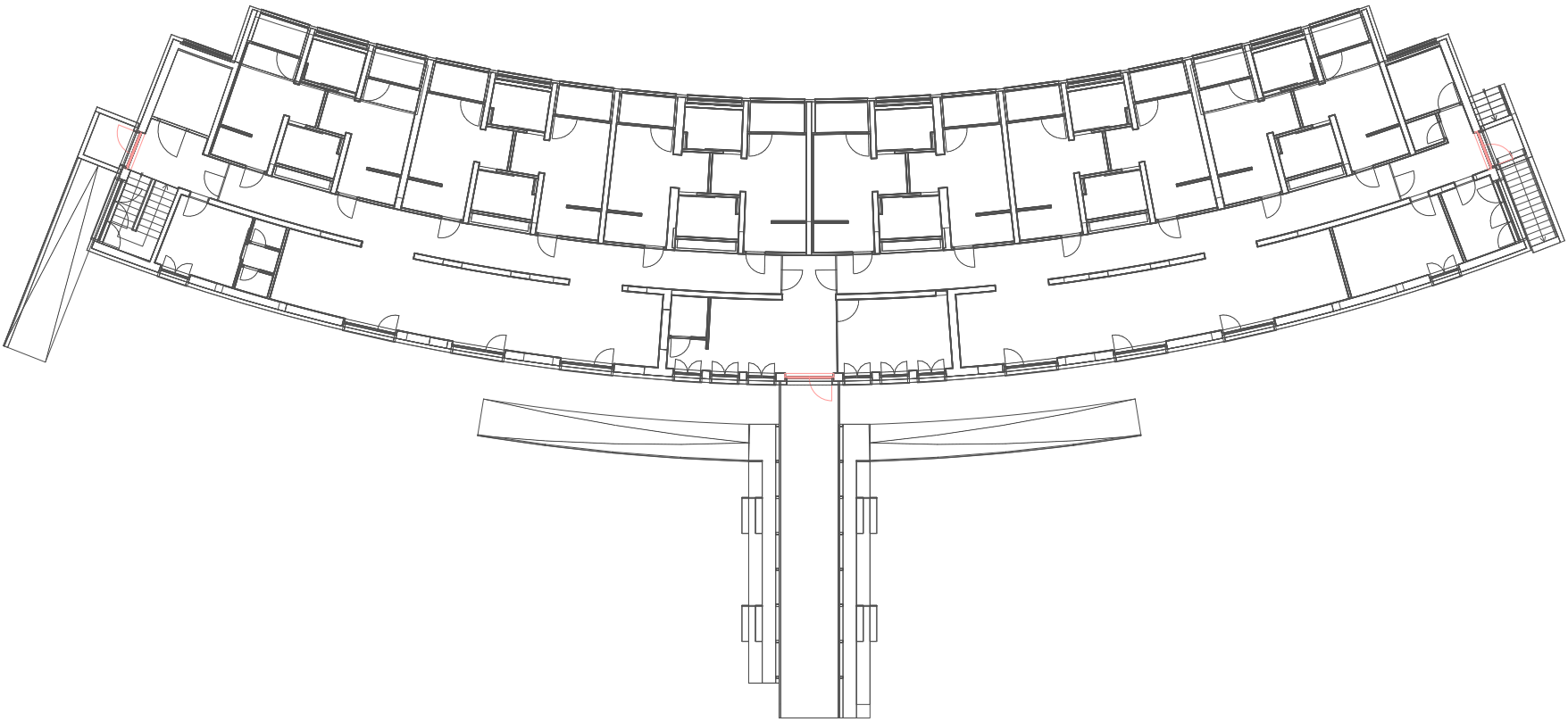


421.000 Porte interne in alluminio



**CPN 622 Porte**

POS. 200.000  
Porte esterne  
POS. 400.000  
Porte interne



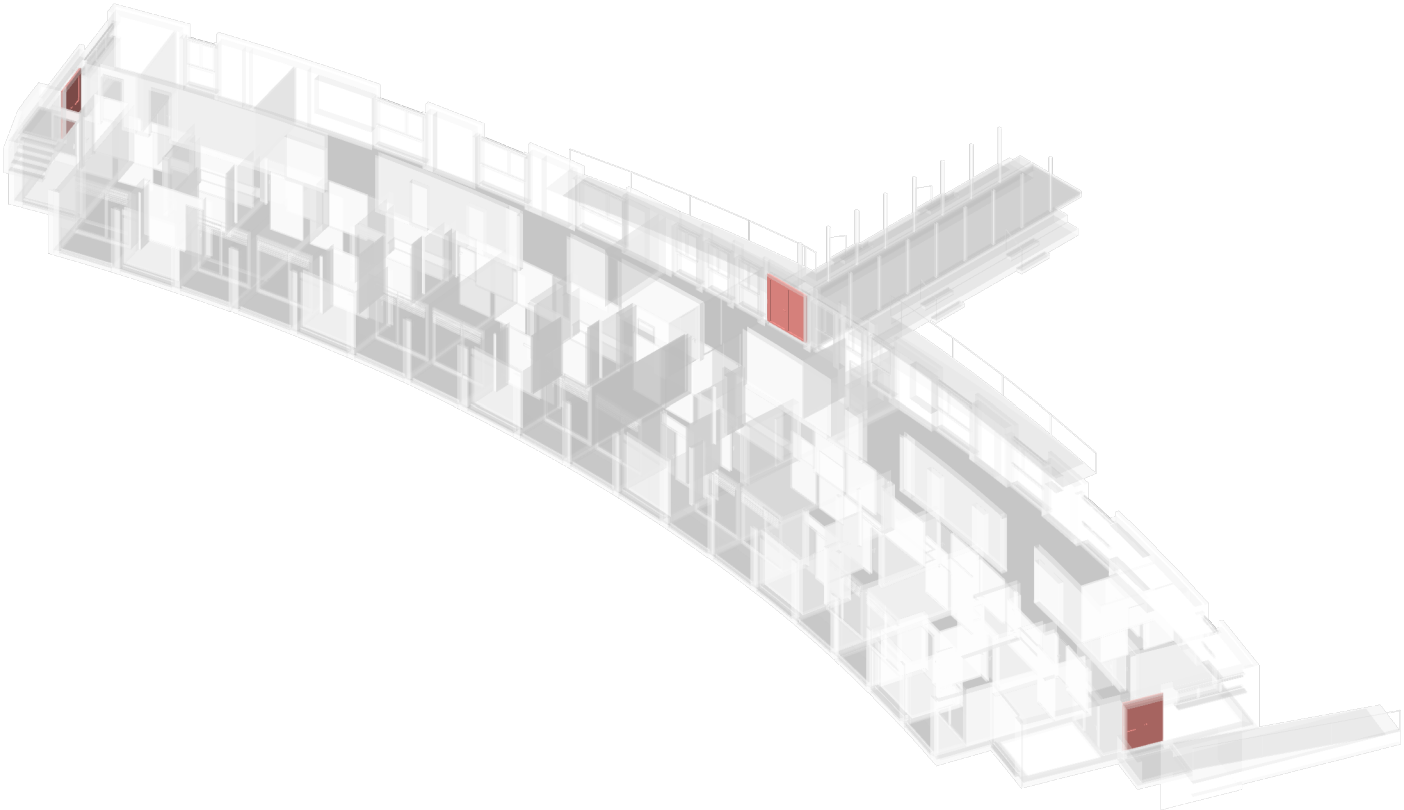
Piano terra

LEGENDA:

231.000 Porte d'ingresso all'immobile



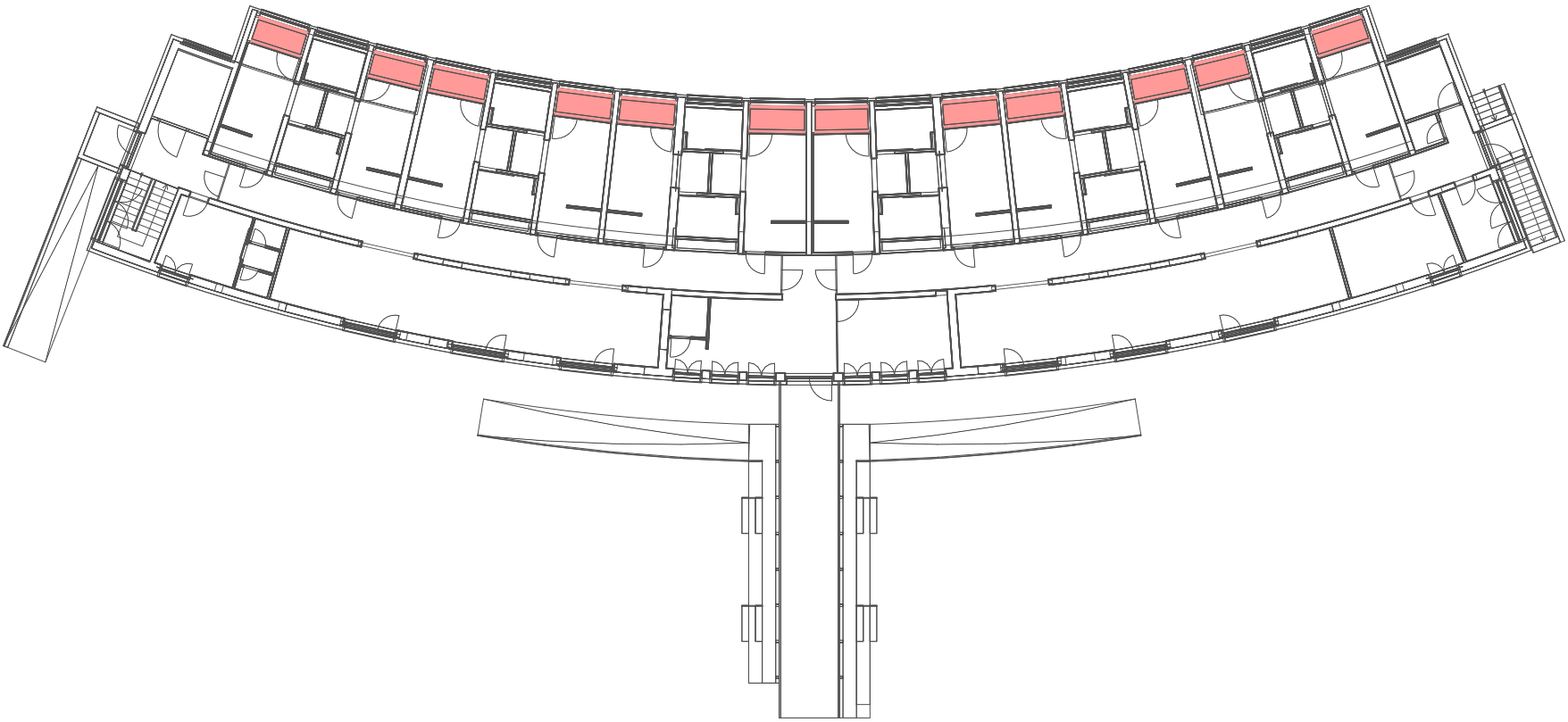
421.000 Porte interne in alluminio





**CPN 653 Controsoffitti di metallo**

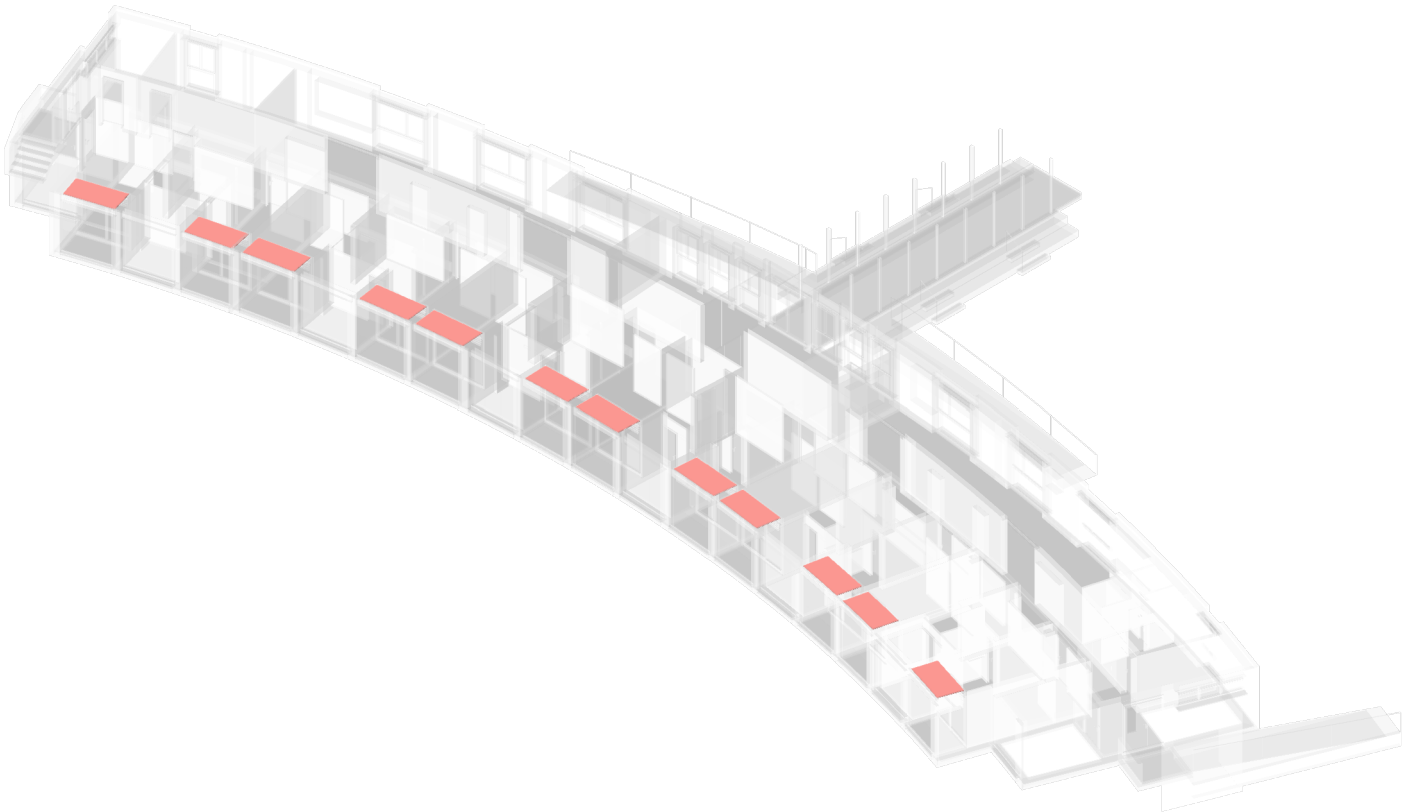
POS. 100.000  
Lavori preliminari



Piano terra

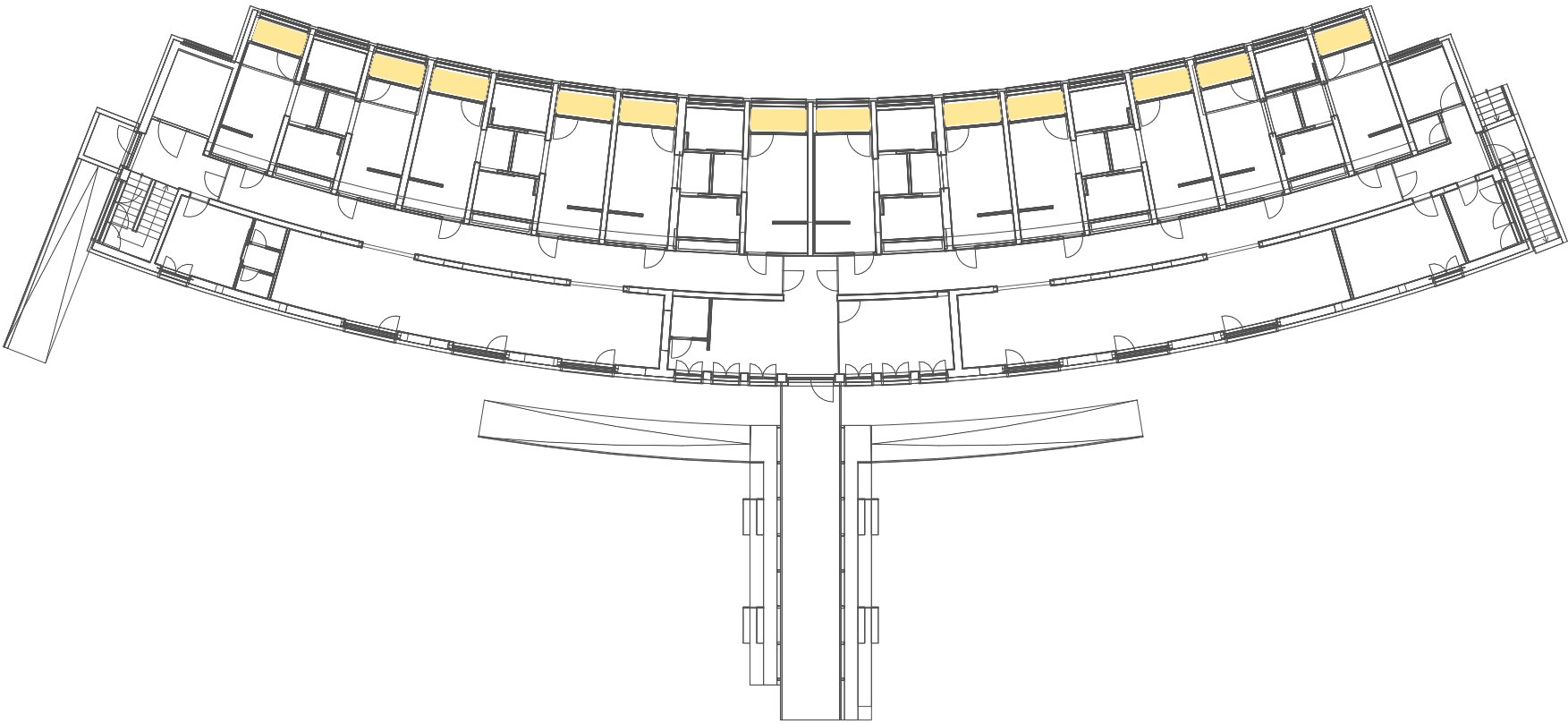
LEGENDA:

171.101 Isolamento termico d mm 40



**CPN 653 Controsoffitti di metallo**

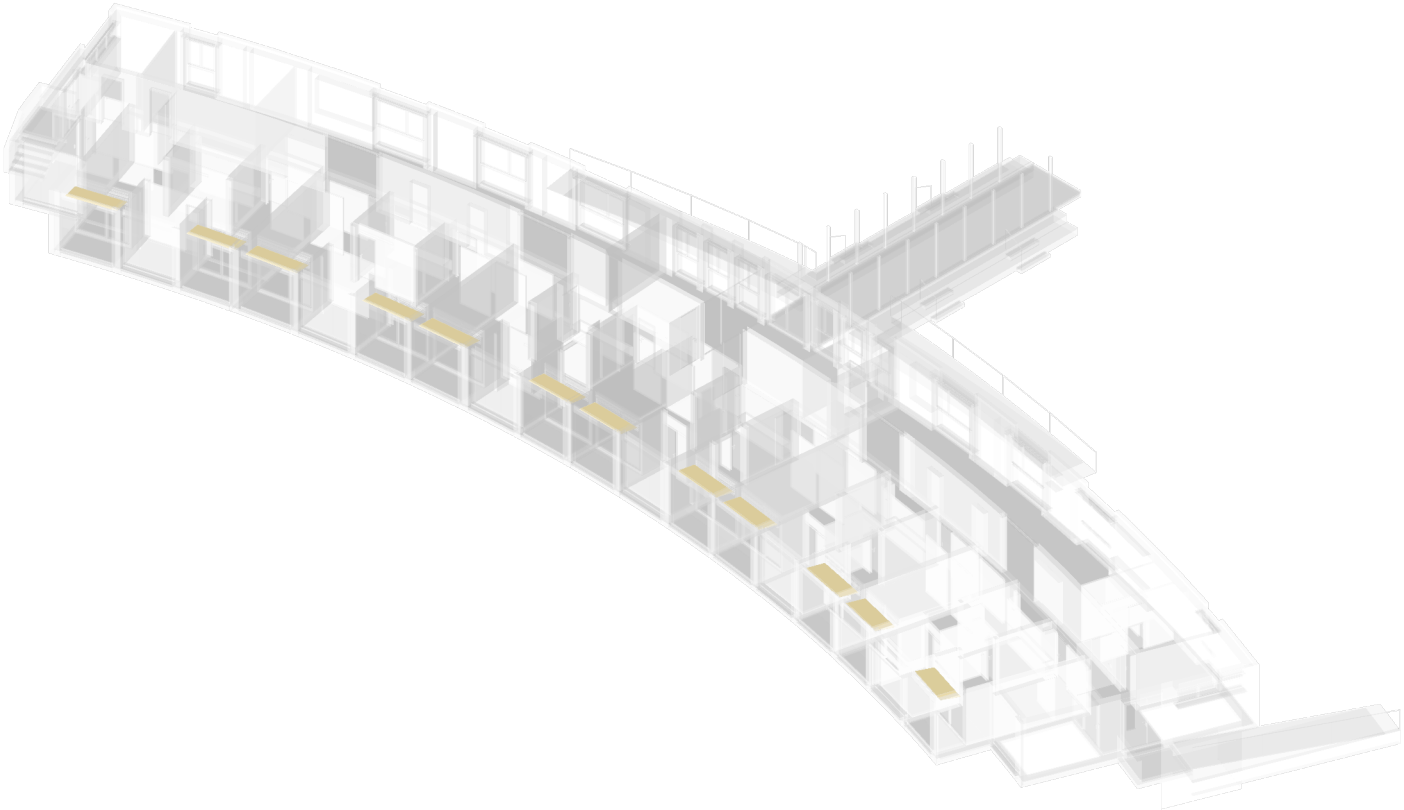
POS. 200.000  
Controsoffitti in lastre



Piano terra

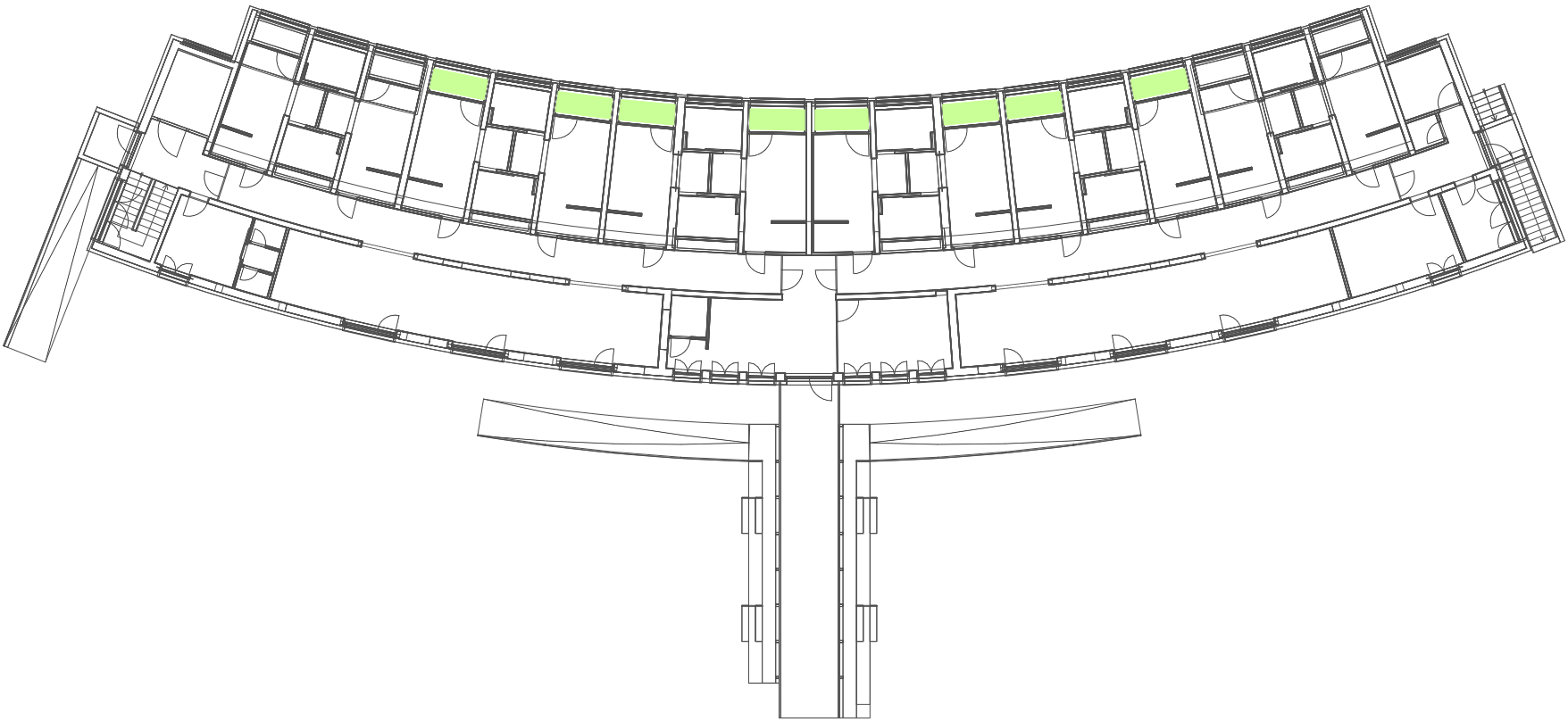
LEGENDA:

211.214 Controsoffitti sospesi in lastre



**CPN 653 Controsoffitti di metallo**

POS. 900.000  
Supplementi



Piano terra

LEGENDA:

912.201 Supplementi per fissaggi su solette  
e pignatte

