

# ALLEGATO ARCH23

Dipartimento delle finanze e dell'economia  
Sezione della logistica

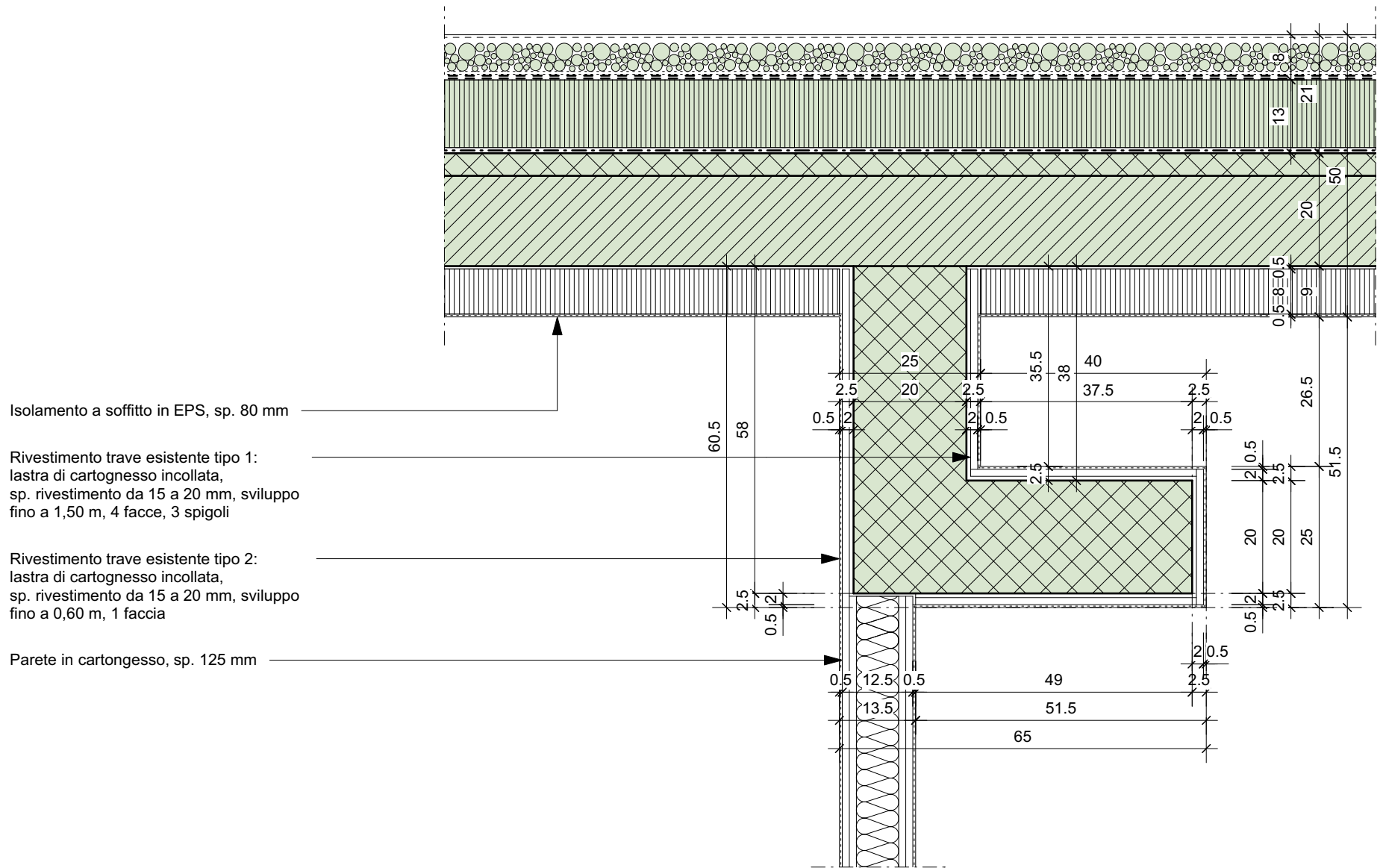
Via del Carmagnola 7  
6500 Bellinzona  
t +41 (0)91 814 77 11  
f +41 (0)91 814 77 19  
e-mail : dfe-sl@ti.ch  
web : www.ti.ch/DFE/DR/SL

Repubblica  
e Cantone  
Ticino

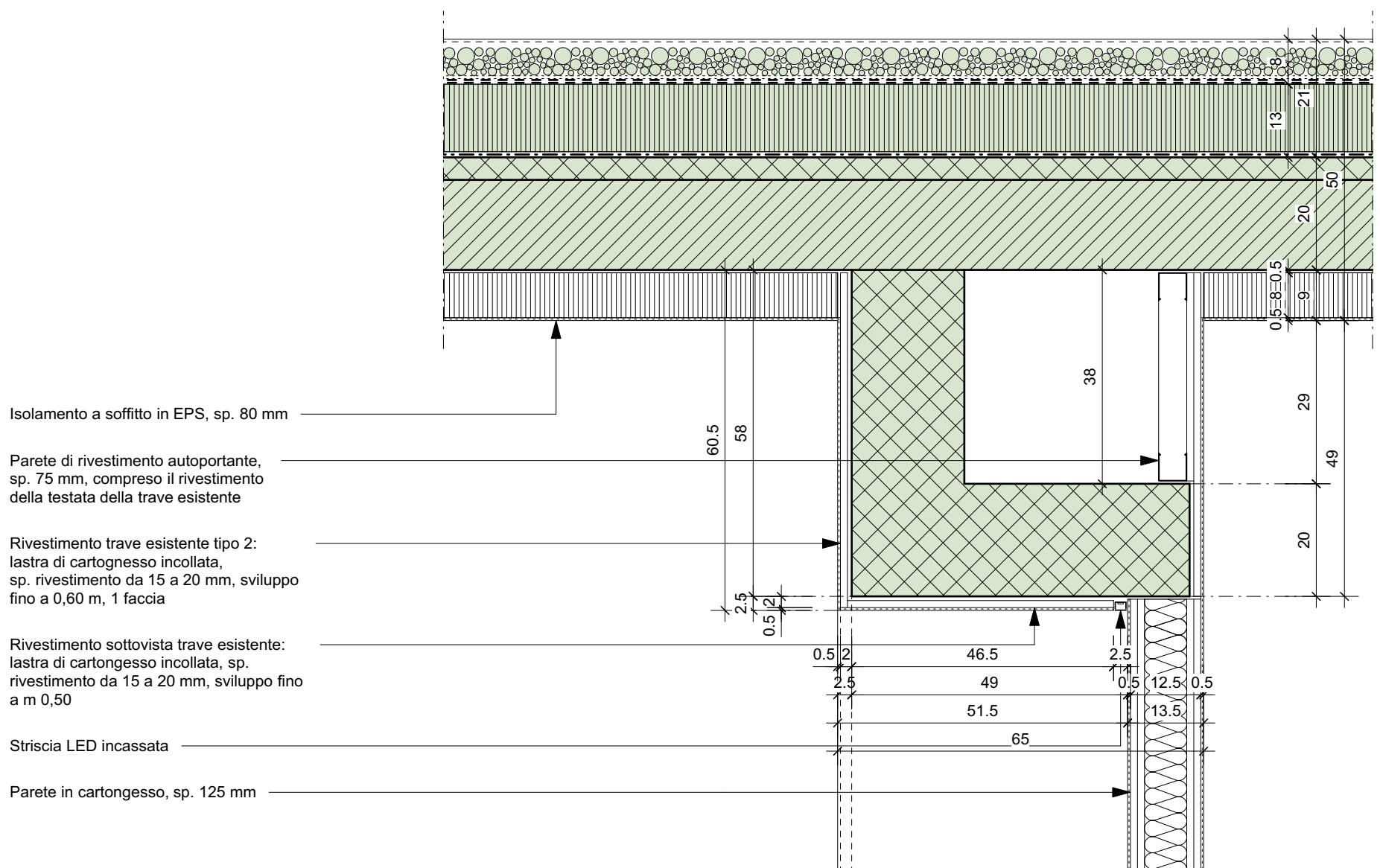
Oggetto	<b>MOTTINO - MENDRISIO</b>				Oggetto N°	File N°	Piano N°	
					<b>E1078</b>	<b>003</b>	<b>3.3</b>	
Nome Piano	<b>DETTAGLI 2710</b>				Mappale		Variante	
					<b>1445</b>		<b>V</b>	
Nome File	E1078_A1_DE_COP_00_010_003_41_1.dwg	Formato	Settore	Scala	Data	Modifica		
Disegnato	Davide Bernasconi	Data	10.02.2020	A4/A3	00	1:10	10.02.2020	V
Approvato	Gianluca Martinelli	Data	10.02.2020					

Gianluca Martinelli architetto  
Via San Gottardo 65  
6828 Balerna

T +41(0)91 682 69 33  
info@studio-martinelli.ch  
studio-martinelli.ch



## RIVESTIMENTO TRAVE ESISTENTE TIPO 1 E TIPO 2



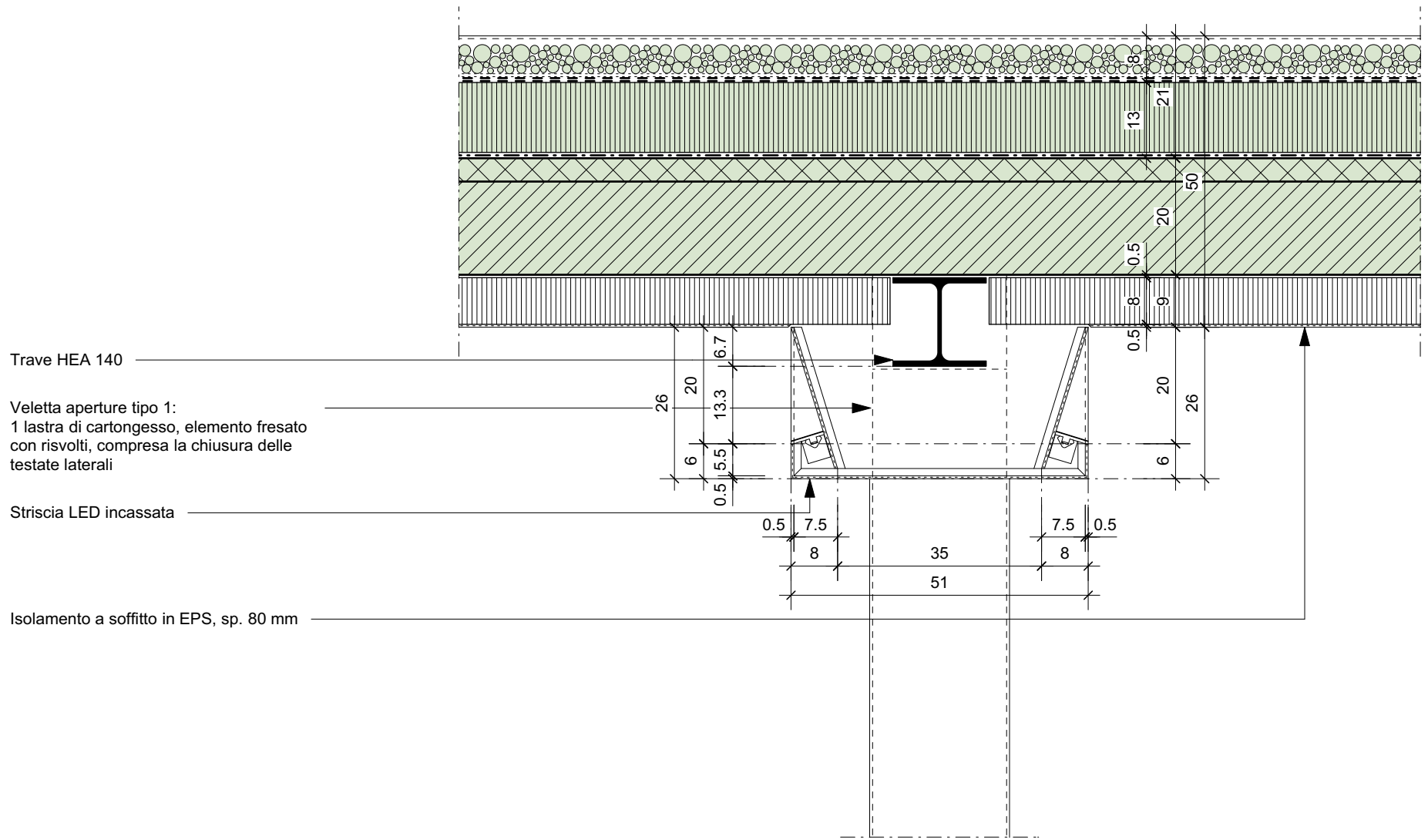
## RIVESTIMENTO TRAVE ESISTENTE TIPO 2 E RIVESTIMENTO SOTTOVISTA

### DETTAGLIO 1

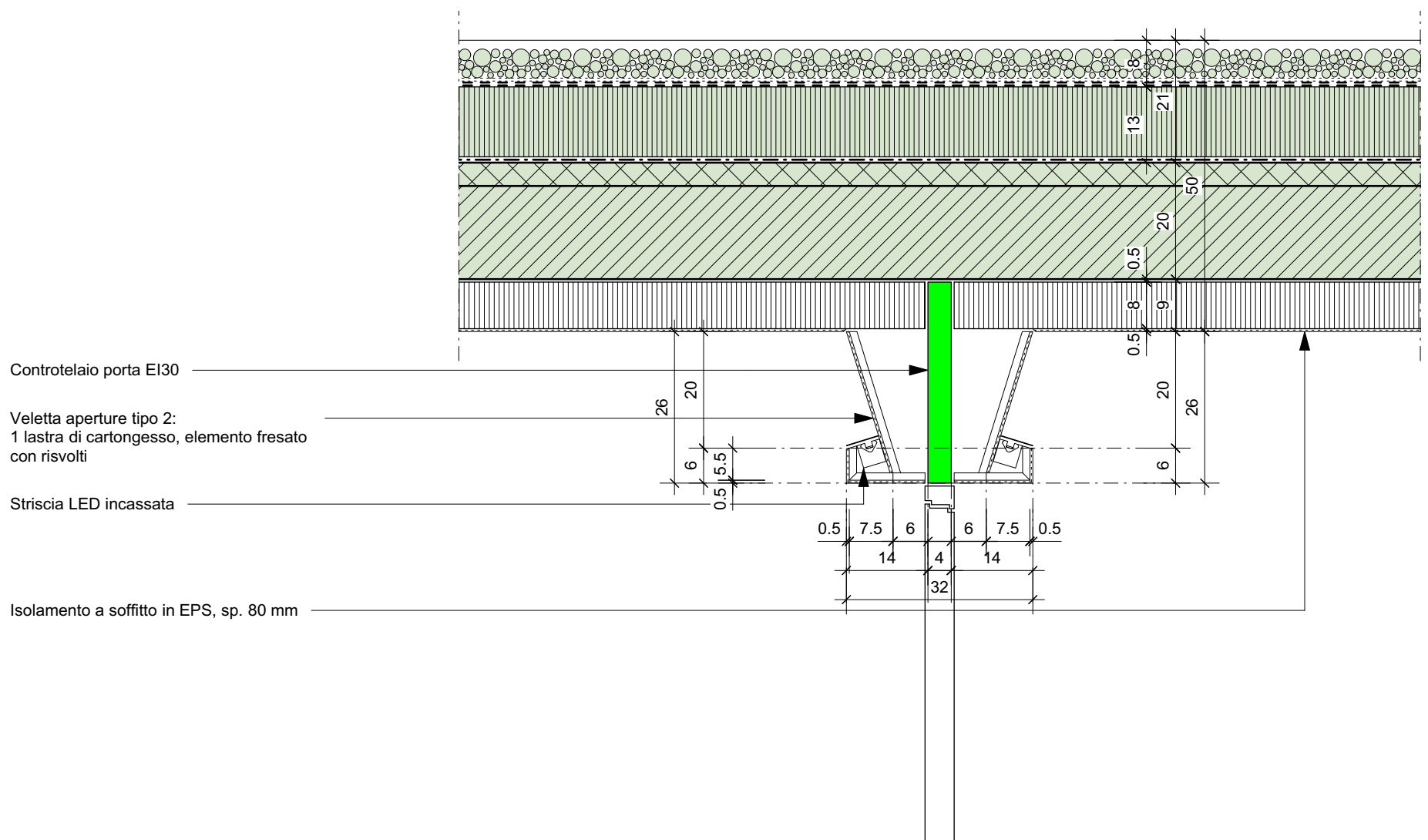
Rivestimento trave esistente tipo 1, tipo 2 e sottovista

Livello 0

Scala 1:10



VELETTA APERTURE TIPO 1



VELETTA APERTURE TIPO 2

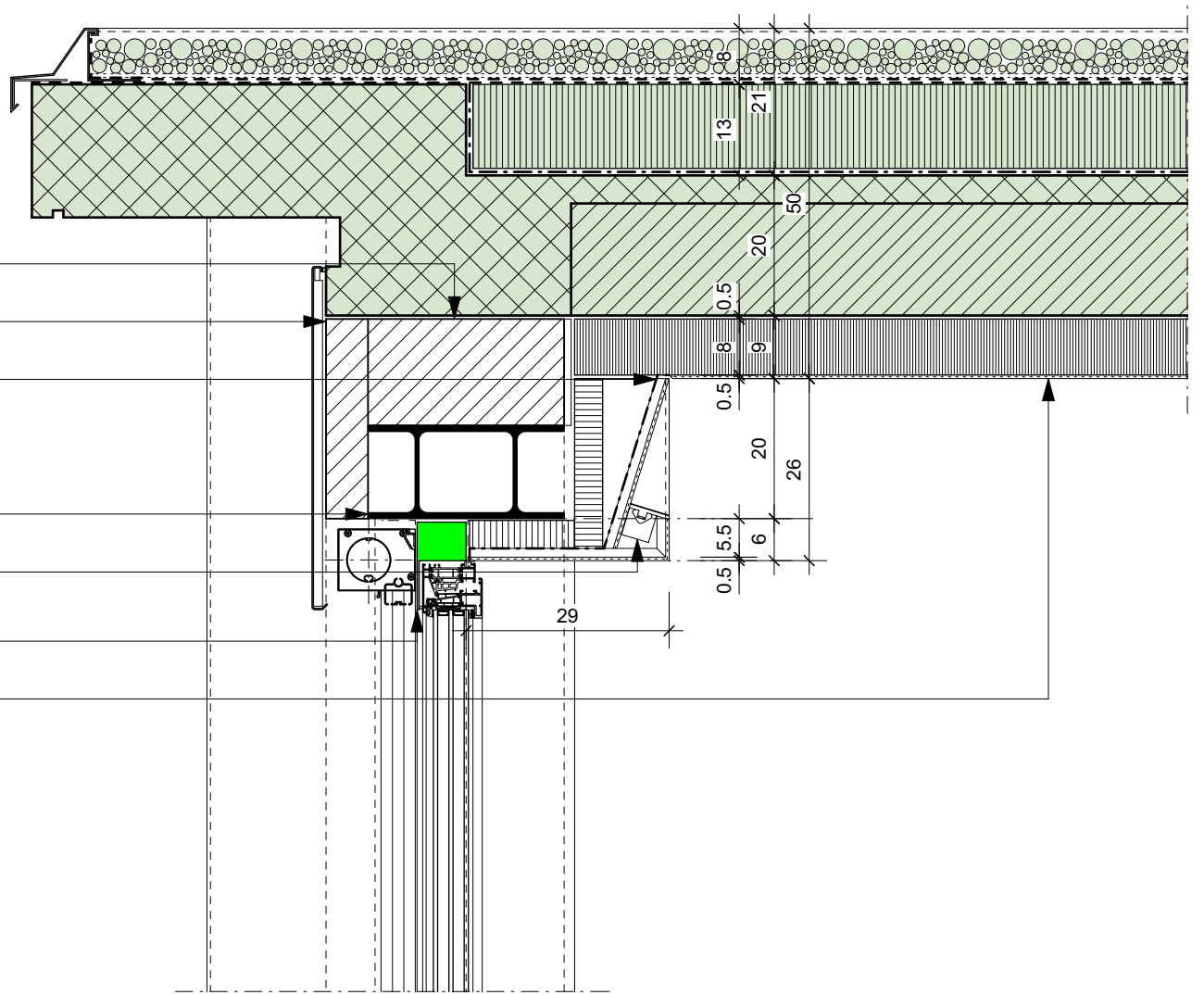
**DETTAGLIO 2**

Veletta aperture tipo 1 e tipo 2

Livello 0

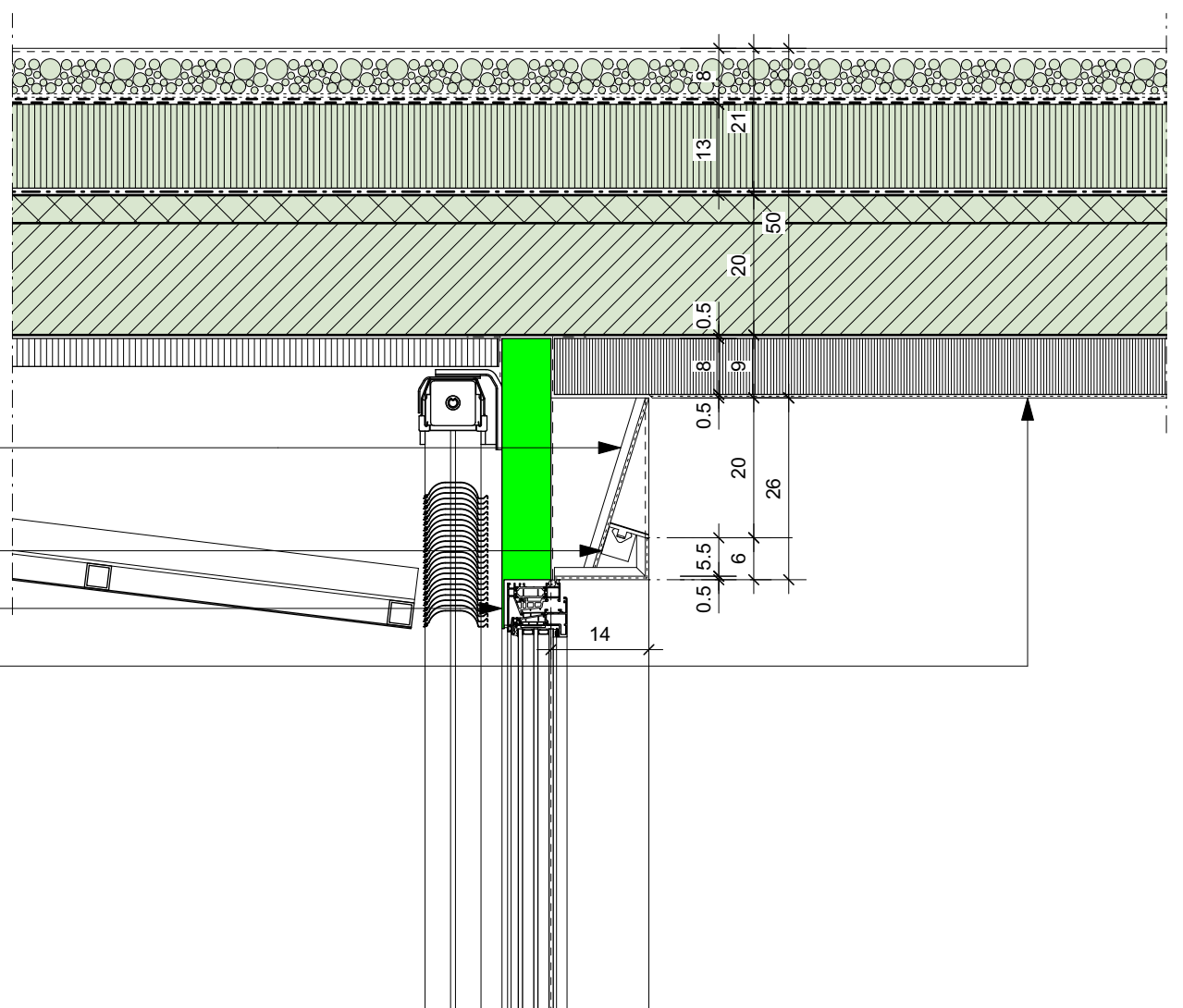
Scala 1:10

- Doppio corso di mattoni BKS
- Frontalino in cotto, sp. 60 mm
- Veletta finestre tipo 1:  
1 lastra di cartongesso, elemento fresato con risvolti, compresa la chiusura delle testate laterali, compreso l'isolamento in PIR sp. 40 mm e il freno vapore
- Trave HEA 140
- Striscia LED incassata
- Controtelaio
- Isolamento a soffitto in EPS, sp. 80 mm

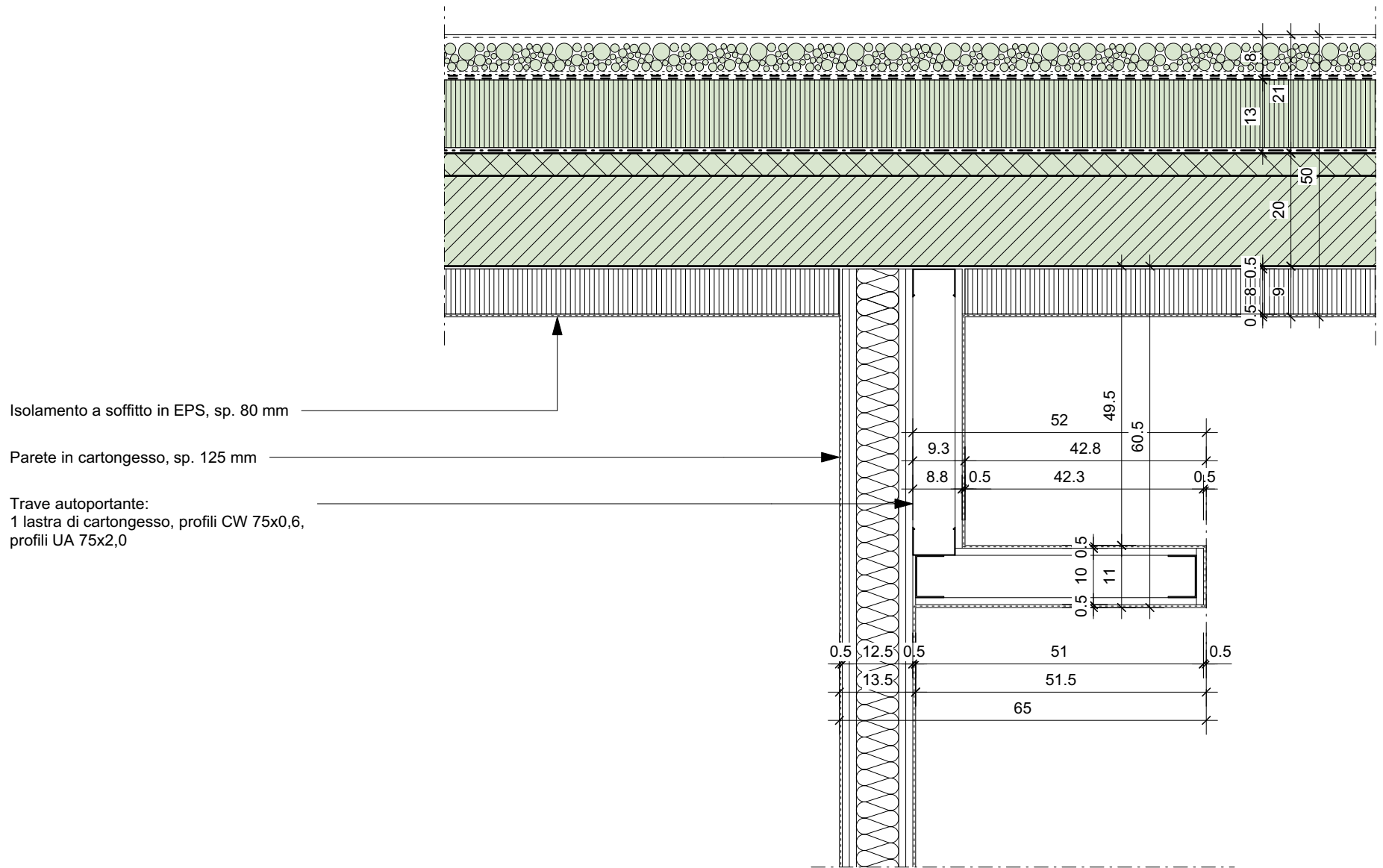


## VELETTA FINESTRE TIPO 1

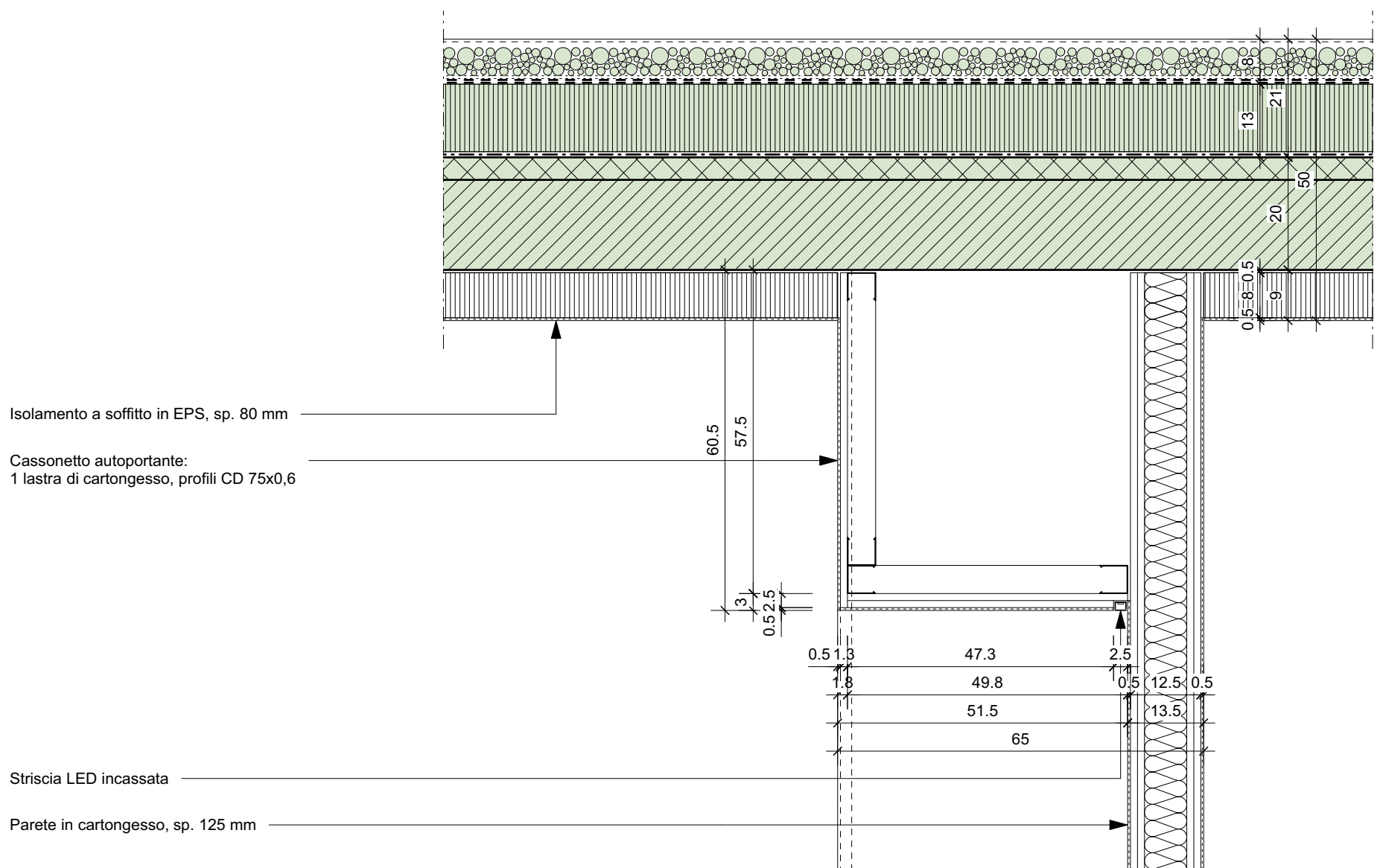
- Veletta finestre tipo 2:  
1 lastra di cartongesso, elemento fresato con risvolti
- Striscia LED incassata
- Controtelaio
- Isolamento a soffitto in EPS, sp. 80 mm



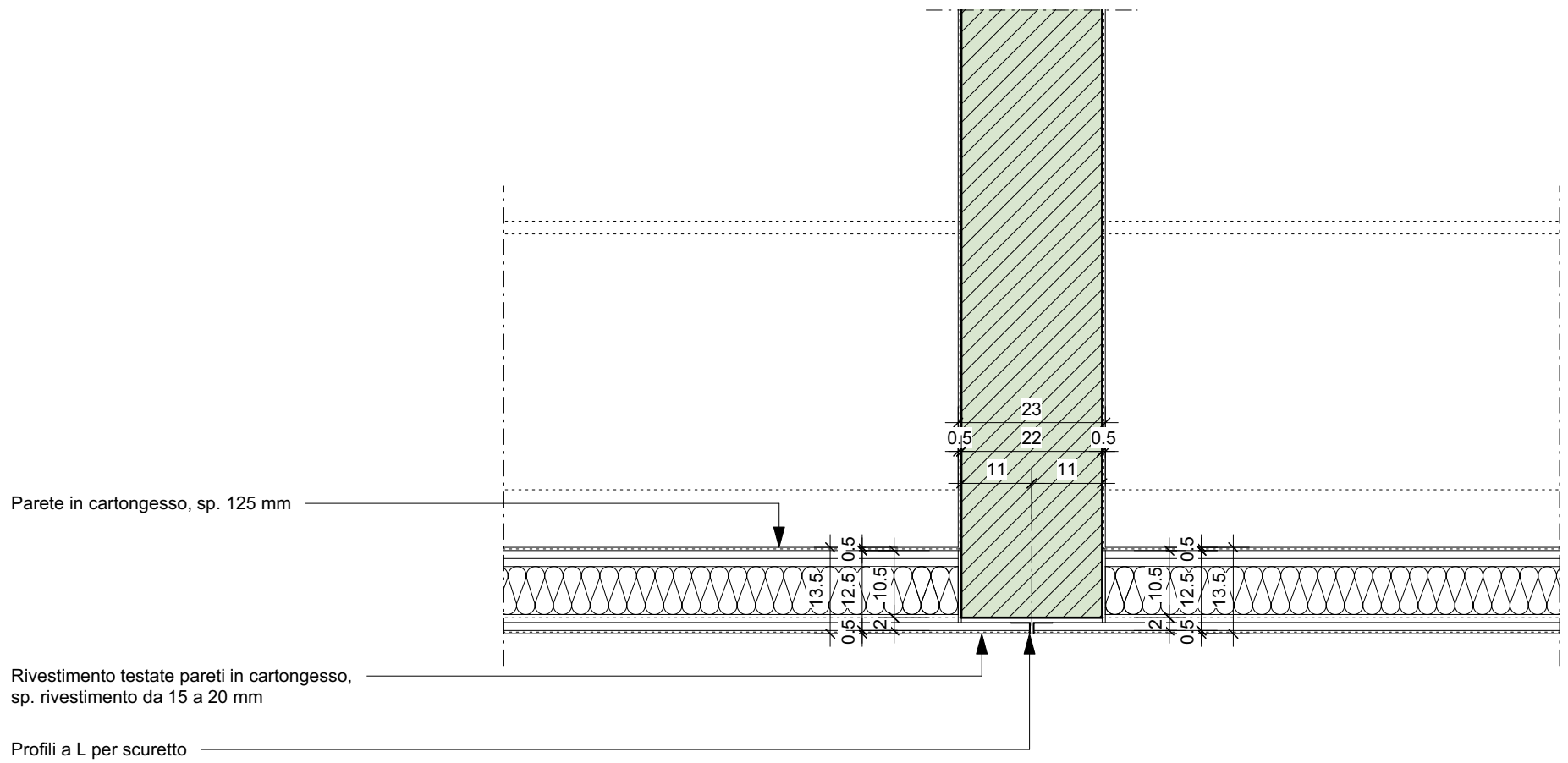
## VELETTA FINESTRE TIPO 2



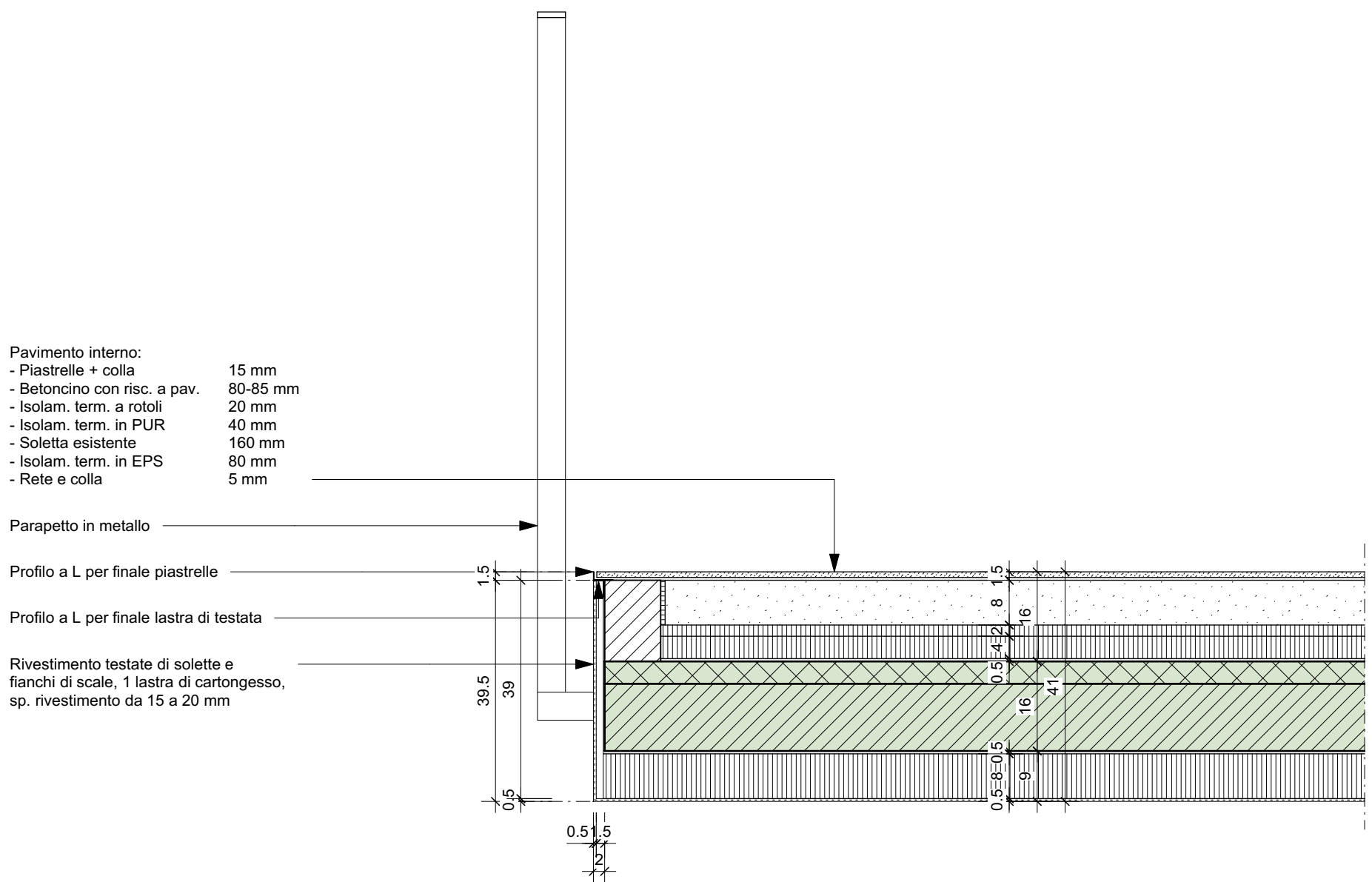
## TRAVE AUTOPORTANTE



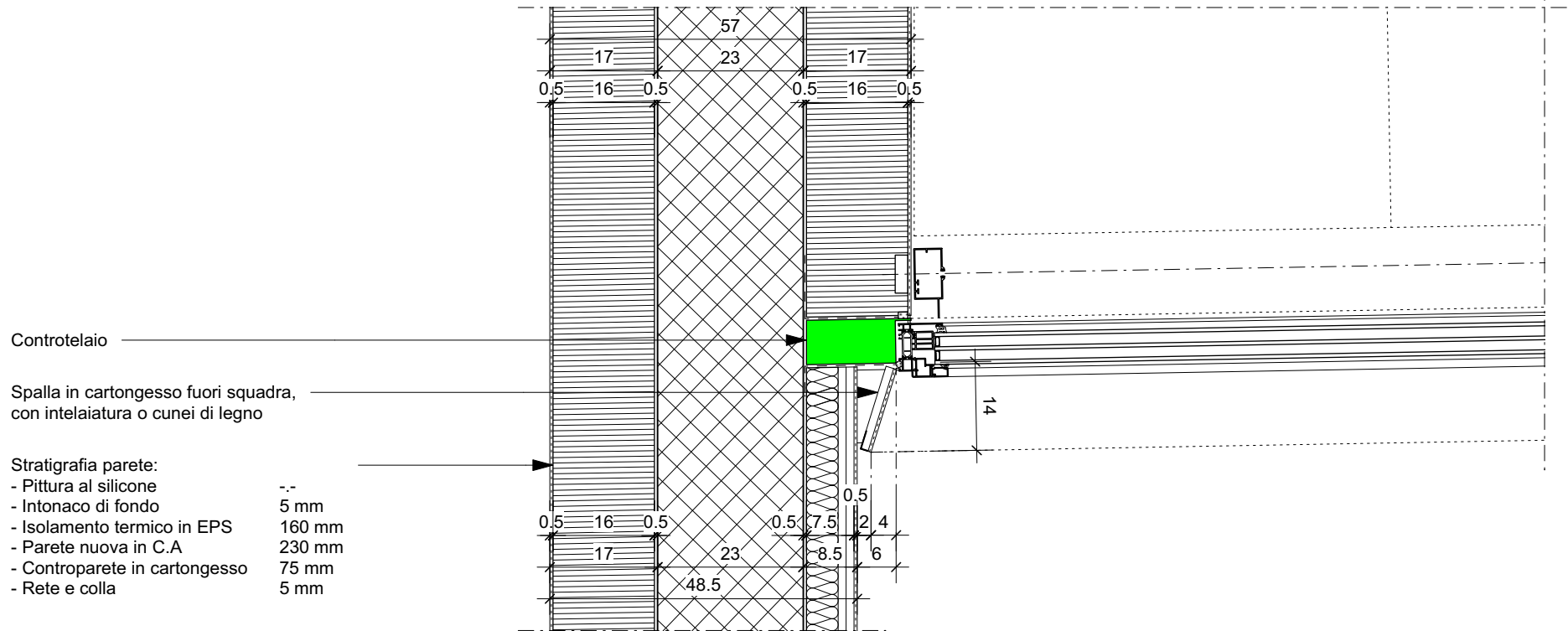
## CASSONETTO AUTOPORTANTE



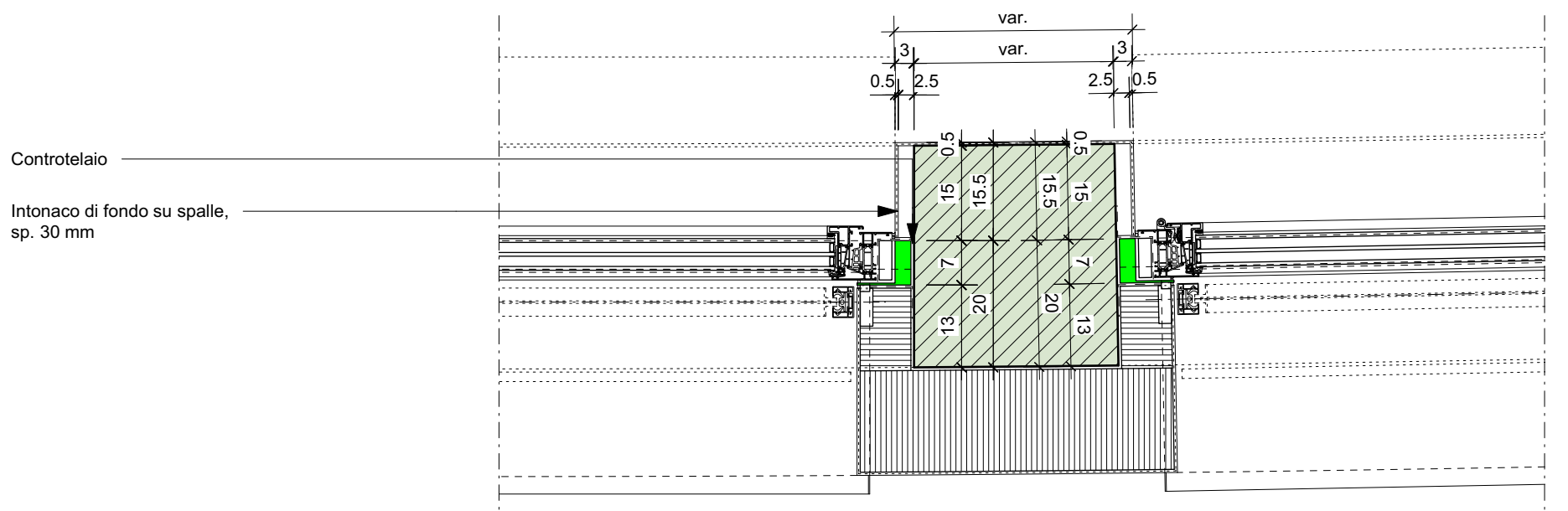
## TESTATE PARETI CORRIDOIO



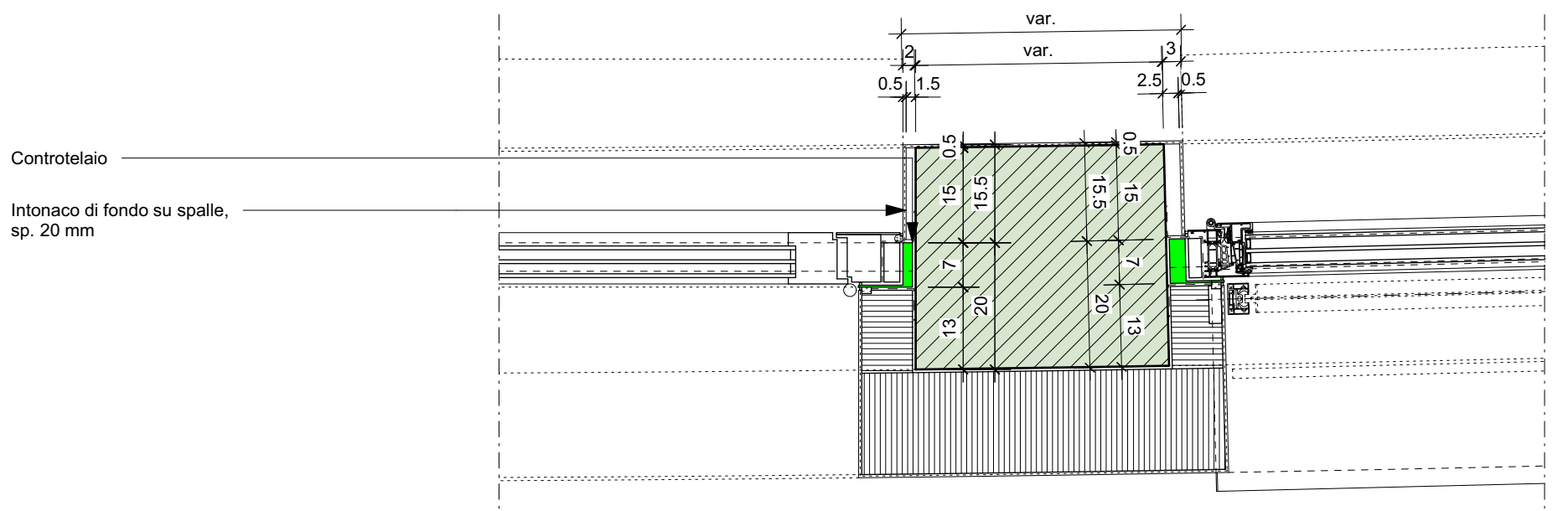
## TESTATE DI SOLETTE E FIANCHI DI SCALE



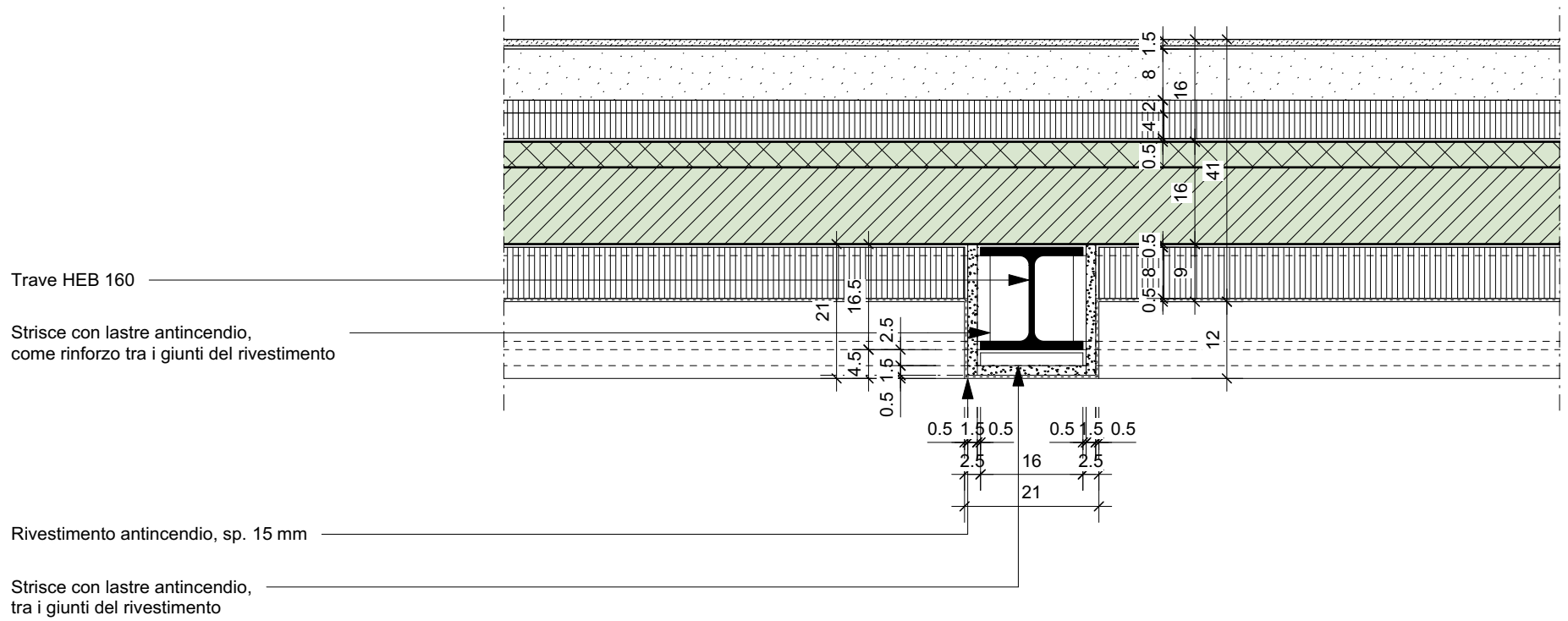
### SPALLE FINESTRE CAMERE



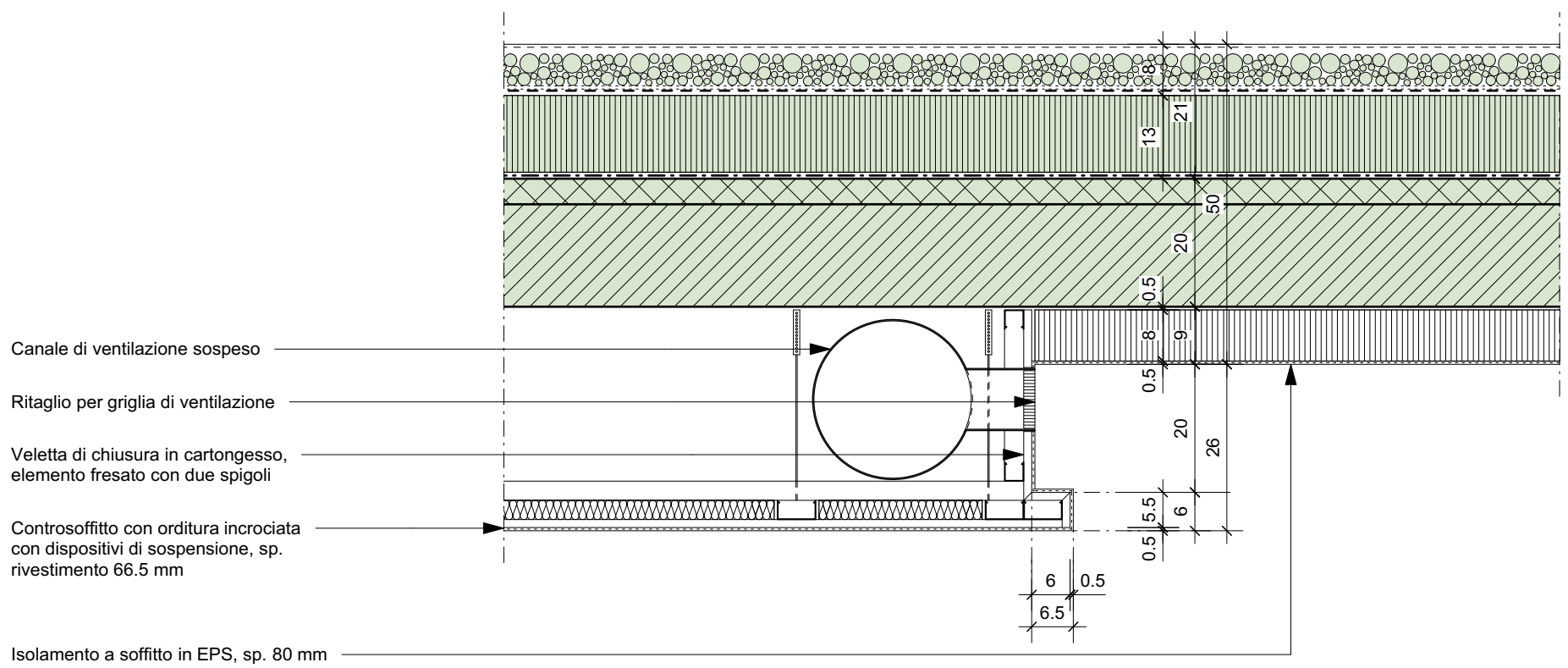
### SPALLE FINESTRE ZONE COMUNI



### SPALLE PORTA D'INGRESSO



## RIVESTIMENTO ANTINCENDIO PUTRELLE LIV. -1



## VELETTA CONTROSOFFITTO