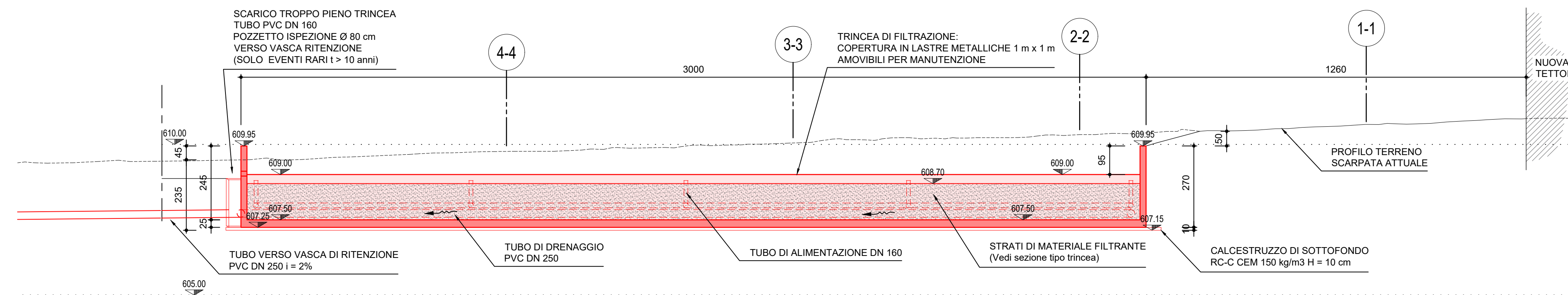
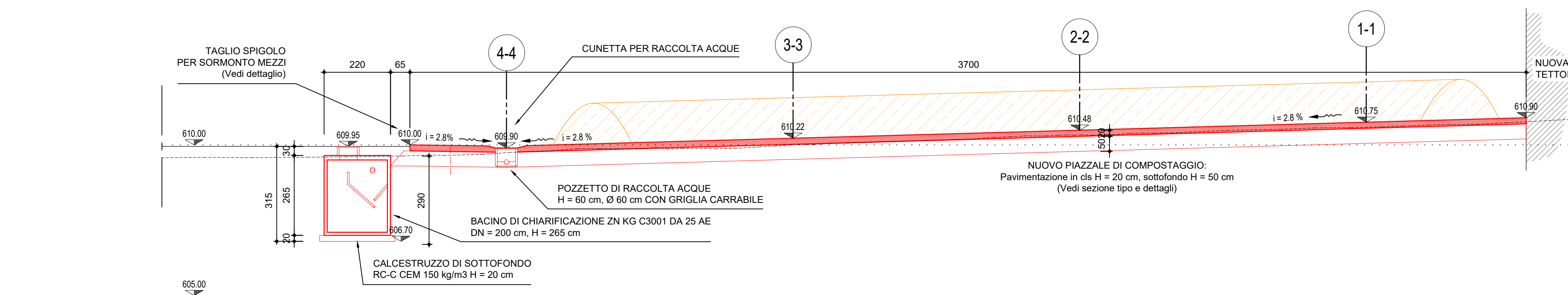


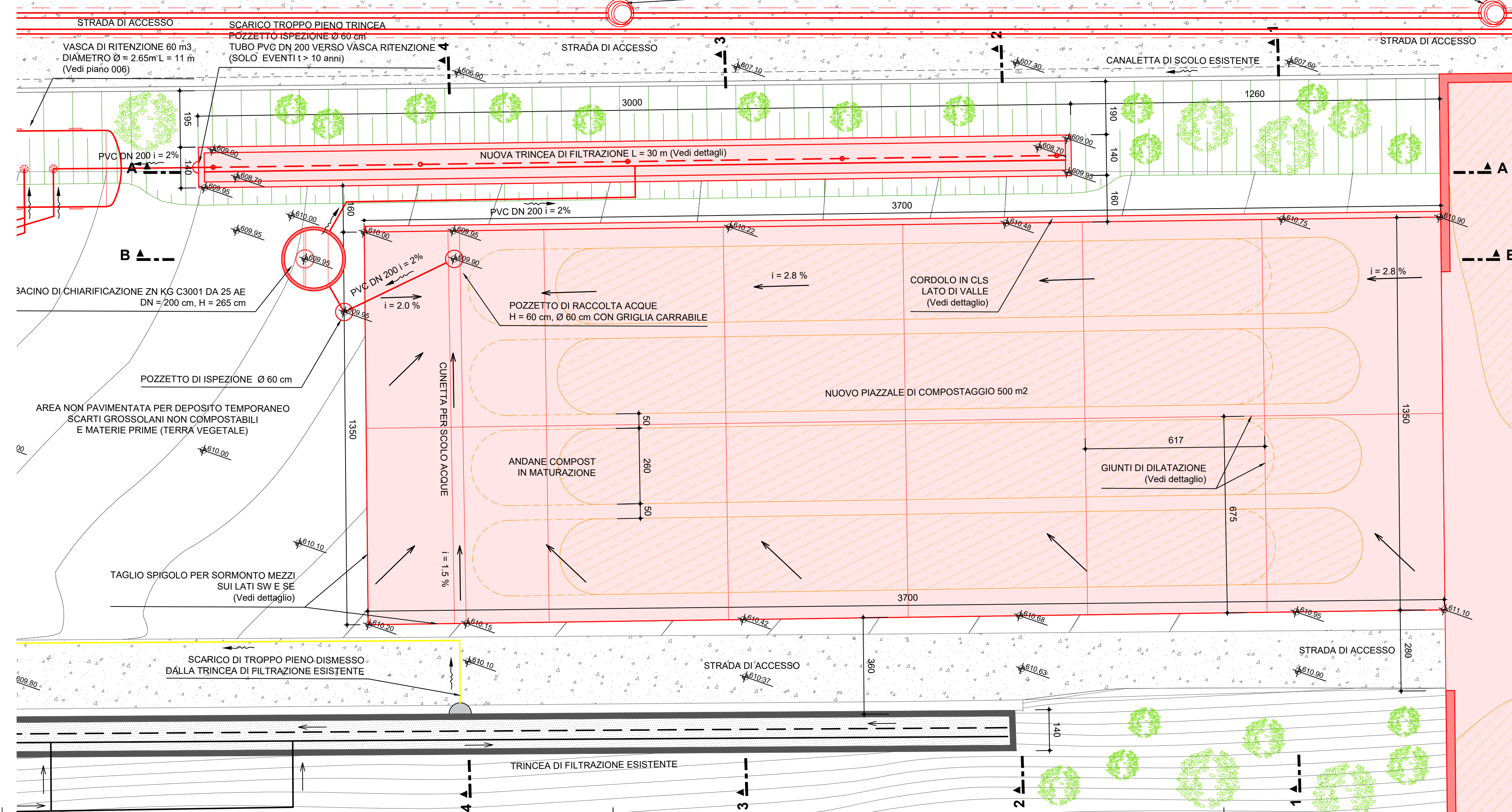
Profilo trincea A-A 1:100



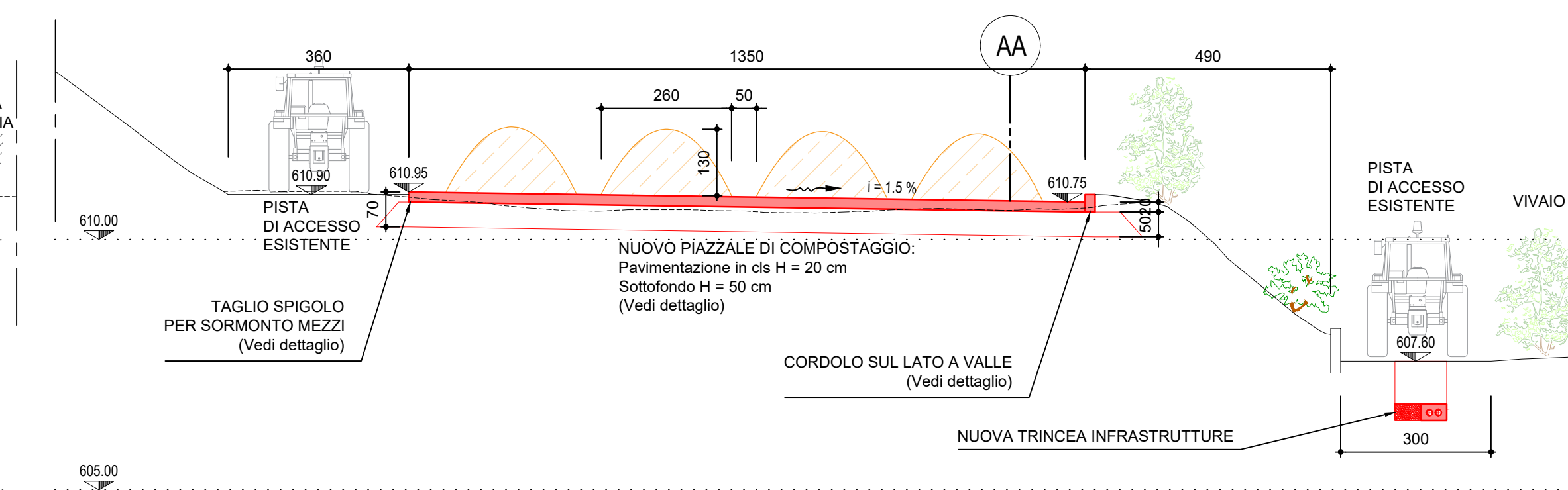
Profilo piazzale B-B 1:100



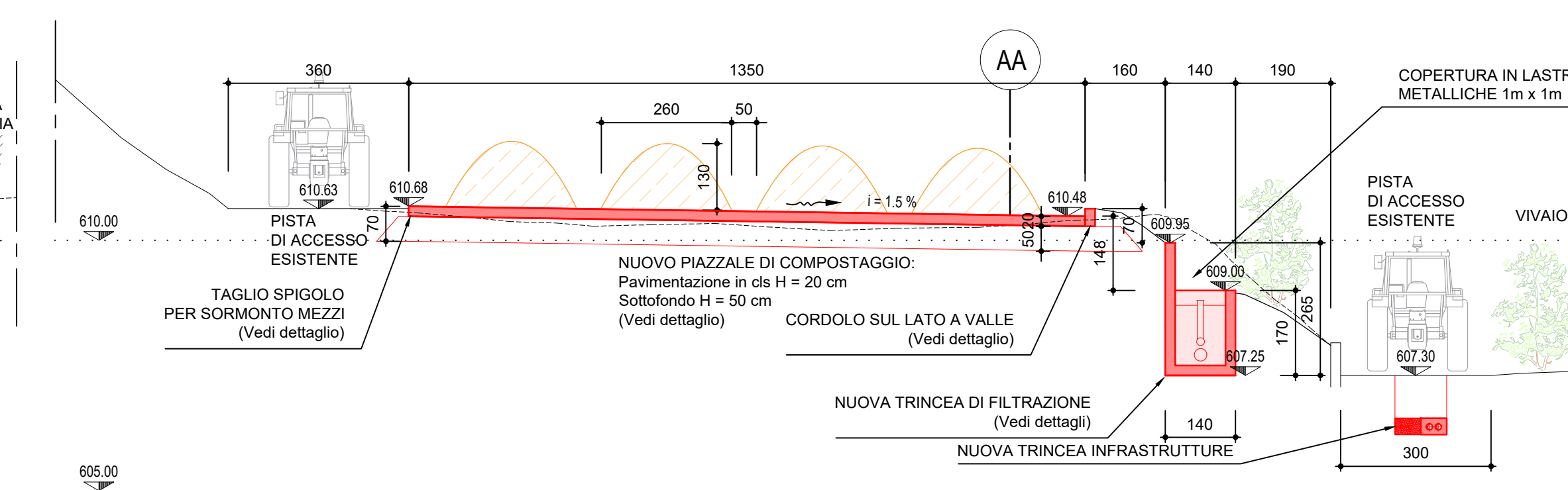
Piano di progetto piazzale in beton e trincea di filtrazione 1:100



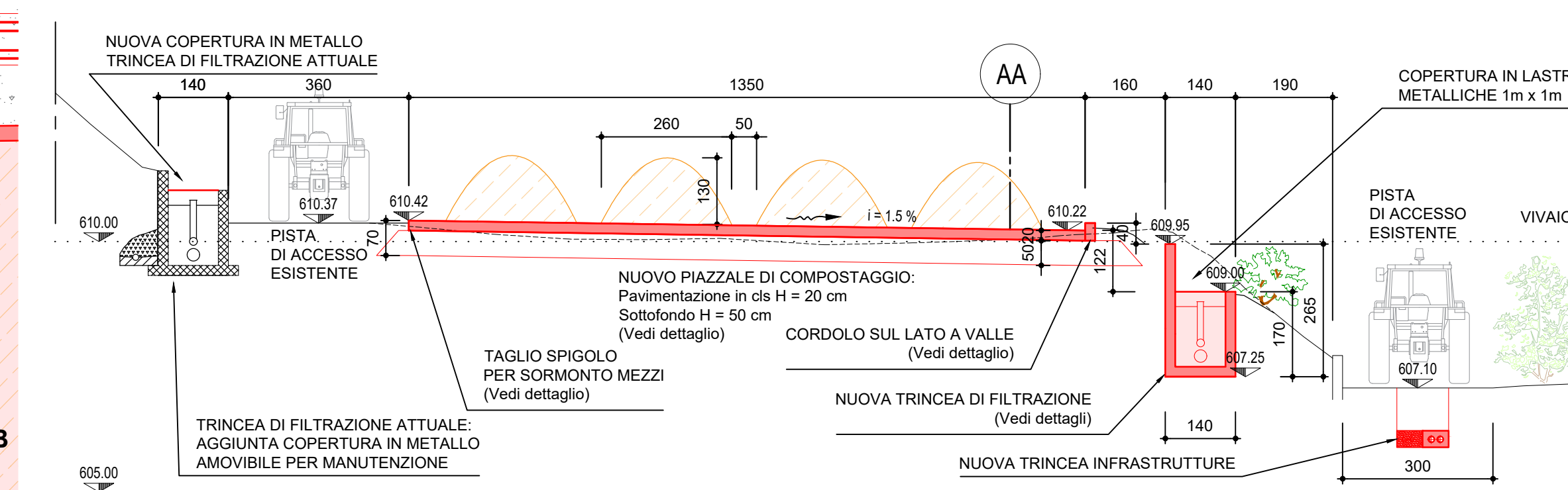
Sezione 1-1 1:100



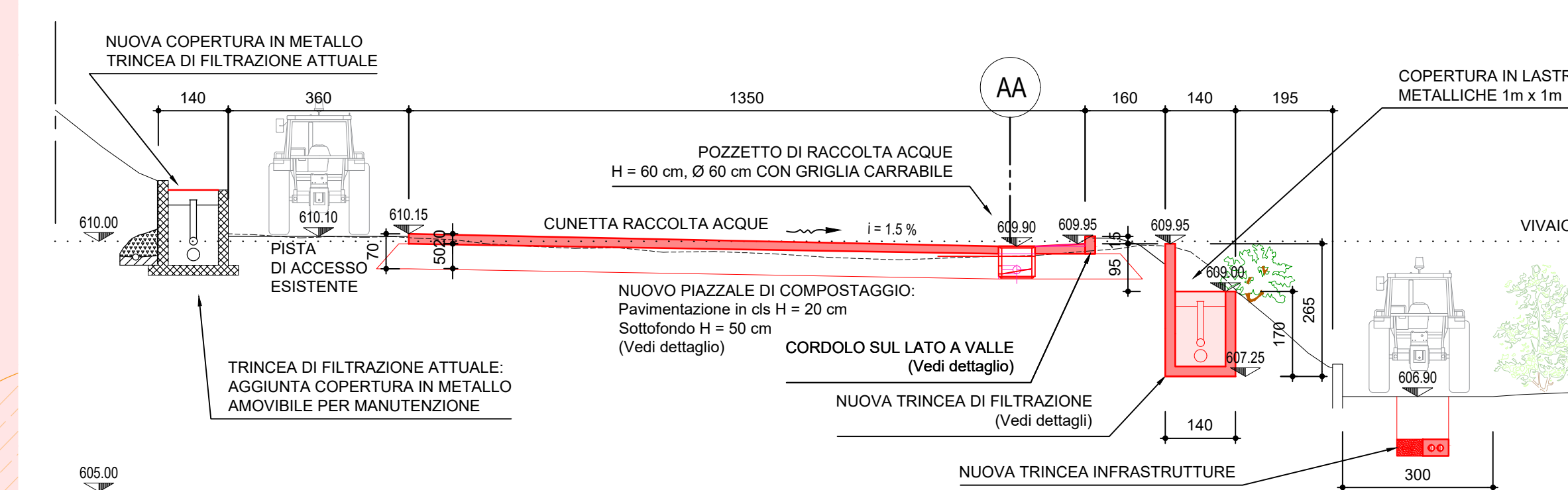
Sezione 2-2 1:100



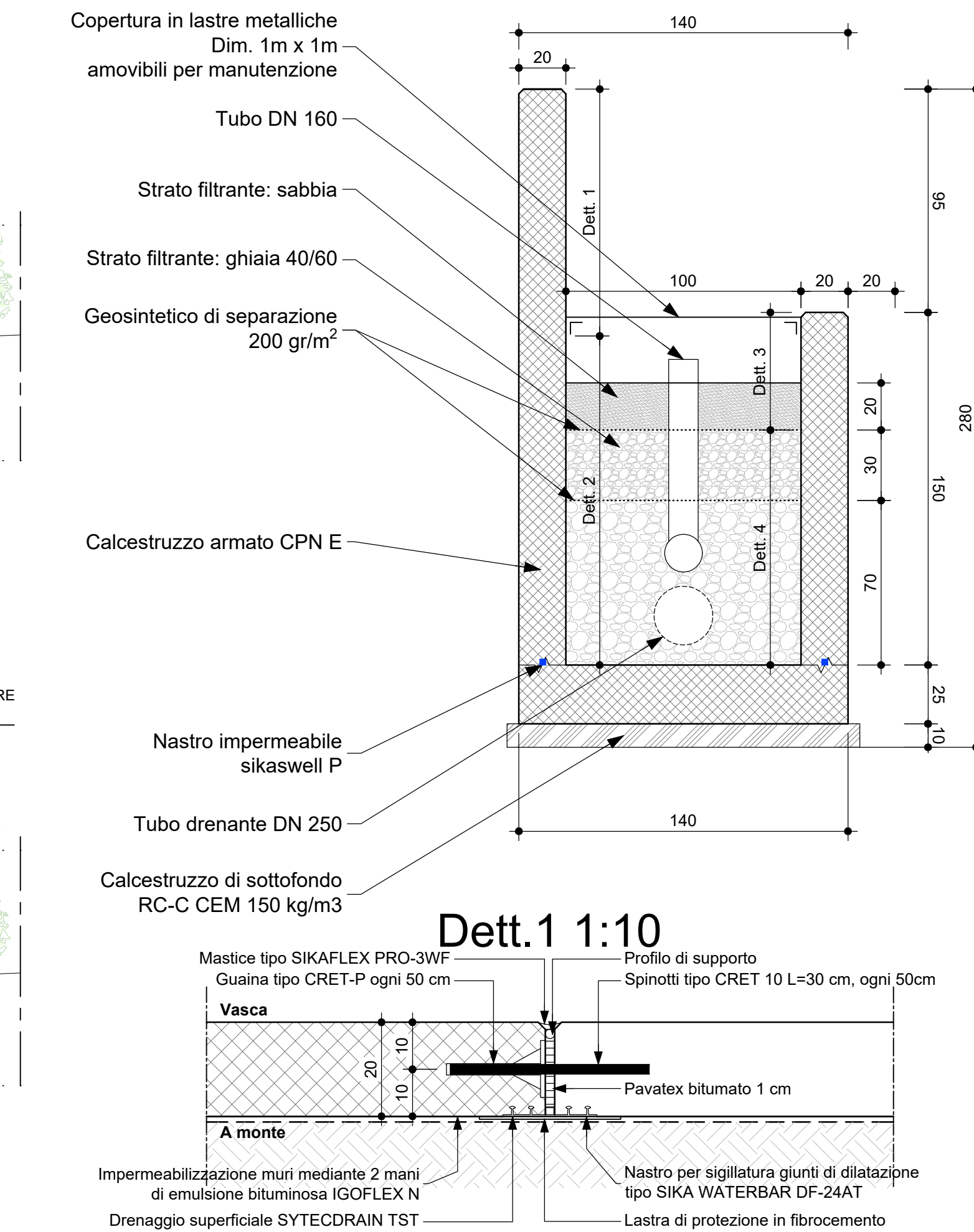
Sezione 3-3 1:100



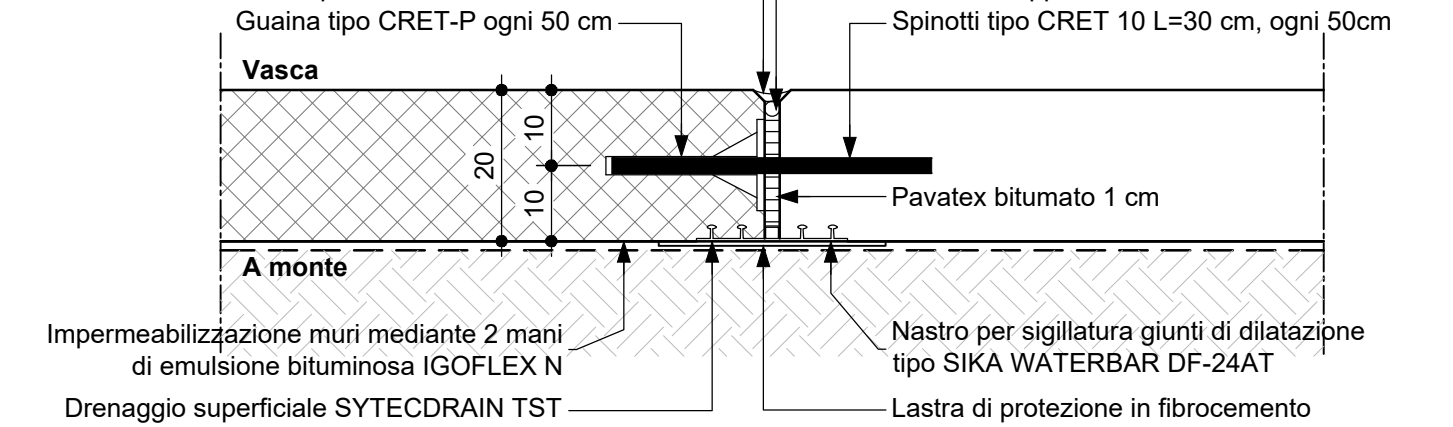
Sezione 4-4 1:100



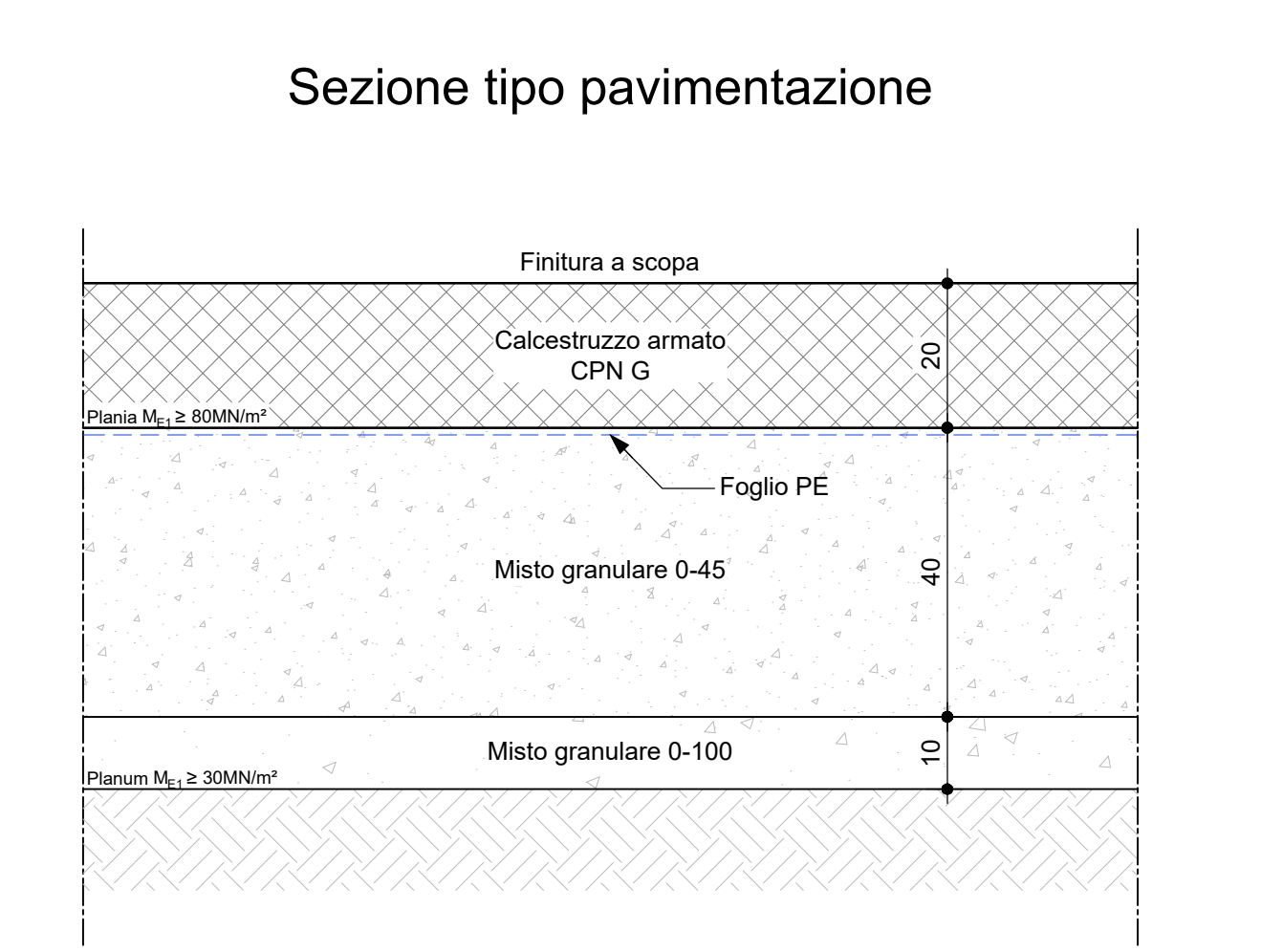
Sezione tipo trincea di infiltrazione 1:20



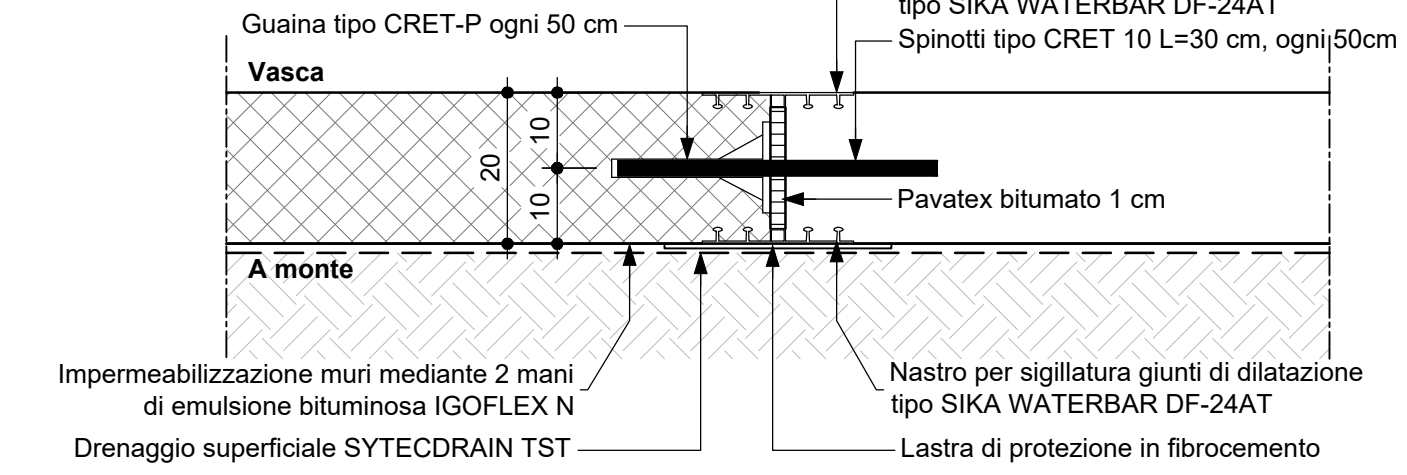
Dett. 1 1:10



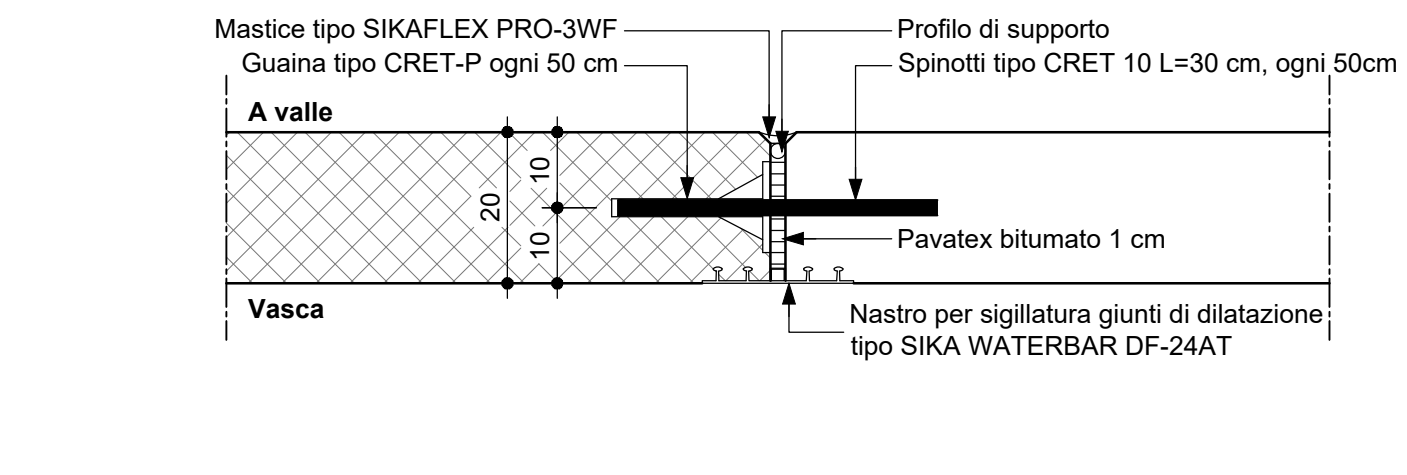
Dettagli pavimentazione 1:10



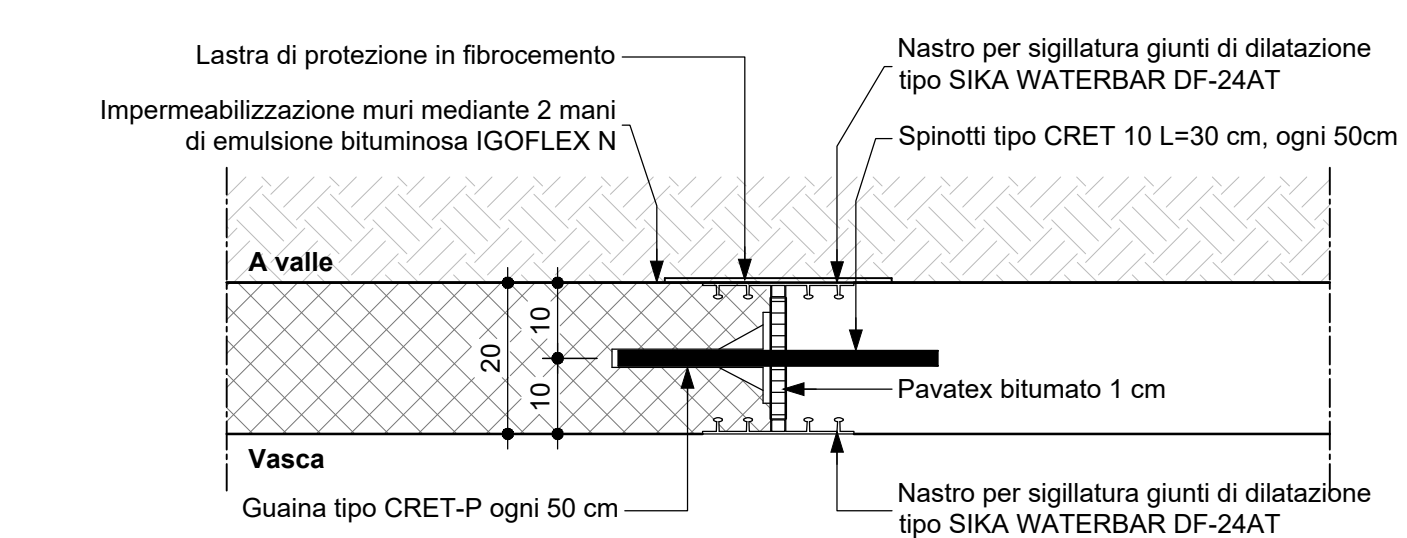
Dett.2 1:10



Dett.3 1:10



Dett.4 1:10



Dipartimento delle finanze e dell'economia
Sezione della logistica
Via del Camogno 7
6500 Bellinzona
T+41 (0)91 814 77 11
F+41 (0)91 814 77 19
e-mail: dfa@df.ch
web: www.df.campidorsl.ch

Repubblica e Cantone Ticino

comal.ch

Oikos Consulenza e ingegneria ambientale SAGL
Via Viste Righelli 20a
6503 Bellinzona
+41 91 829 16 81
info@oikos.swiss

Legenda:
— Manifattori ed impianti esistenti
— Nuovi manifattori ed impianti
— Demolizioni
— Canalizzazioni a gravità
— Condotte in pressione
— Drenaggio
P Pompa esistente
P Pompa nuova ed altri impianti
T Troppo pieno esistente
S Sifoni esistenti

N°	Dis.	Data	Correzioni