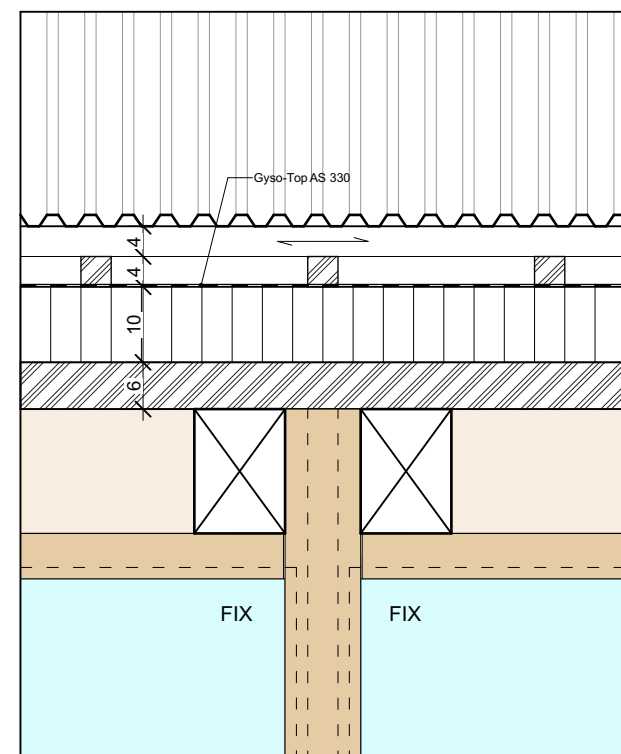
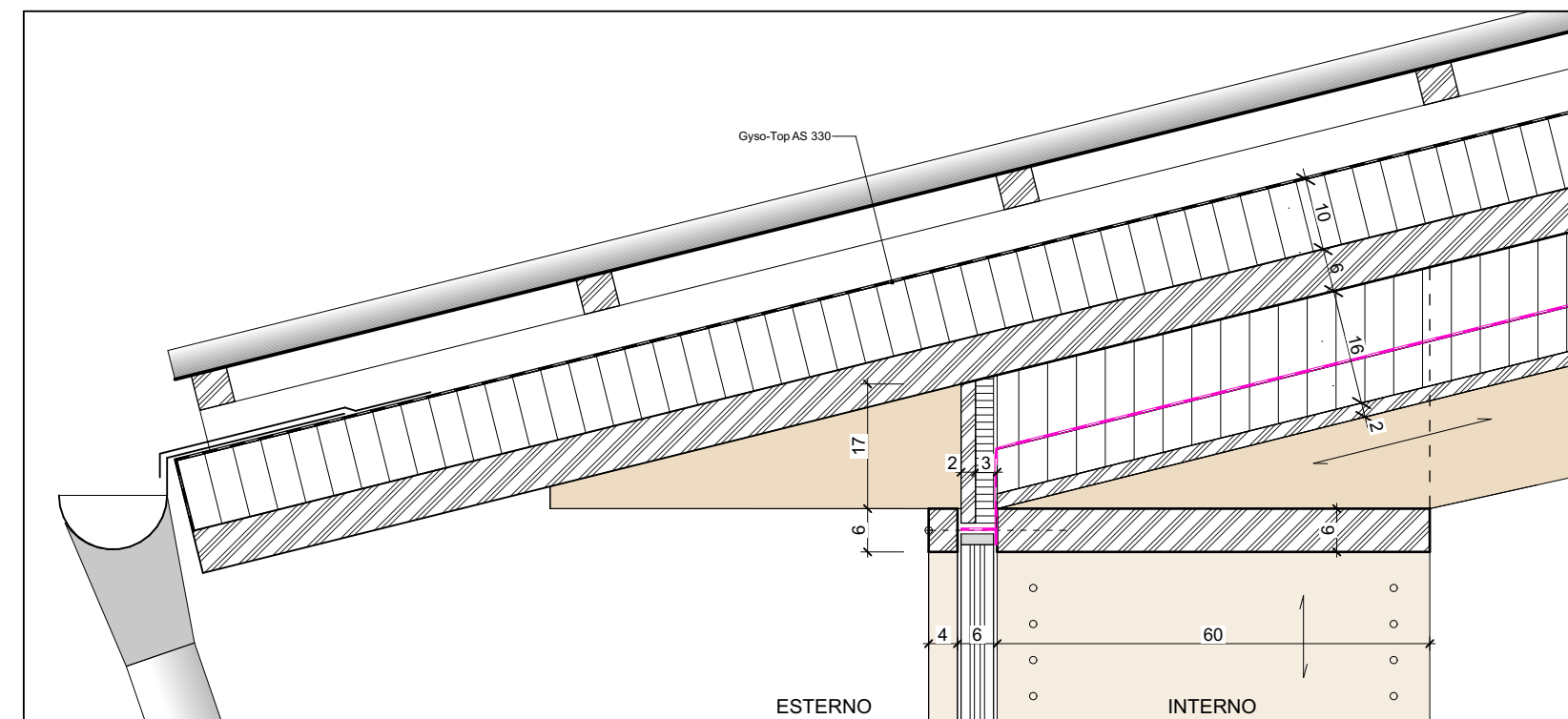


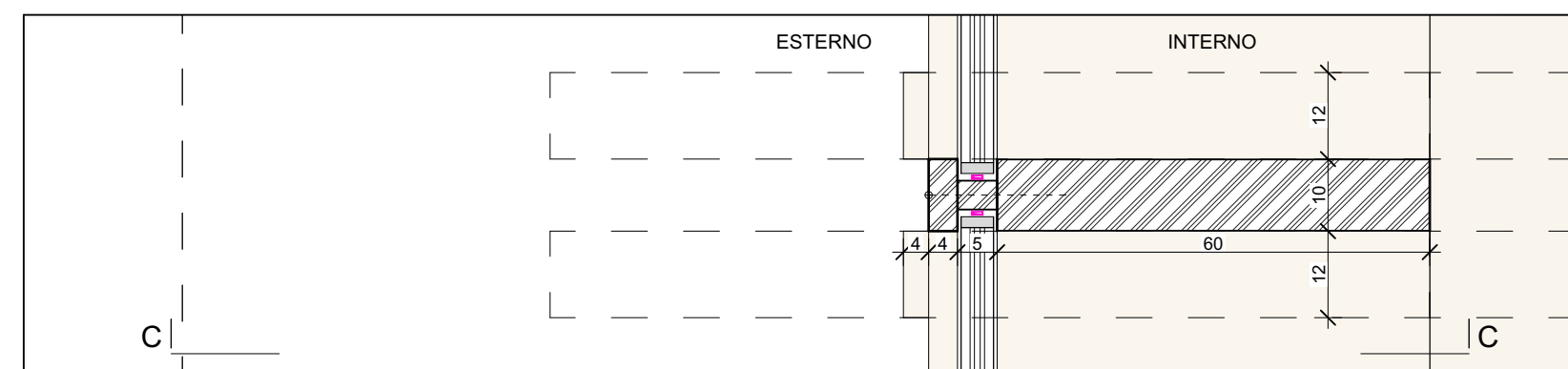
BLOCCO SALA - PARETE VETRATA



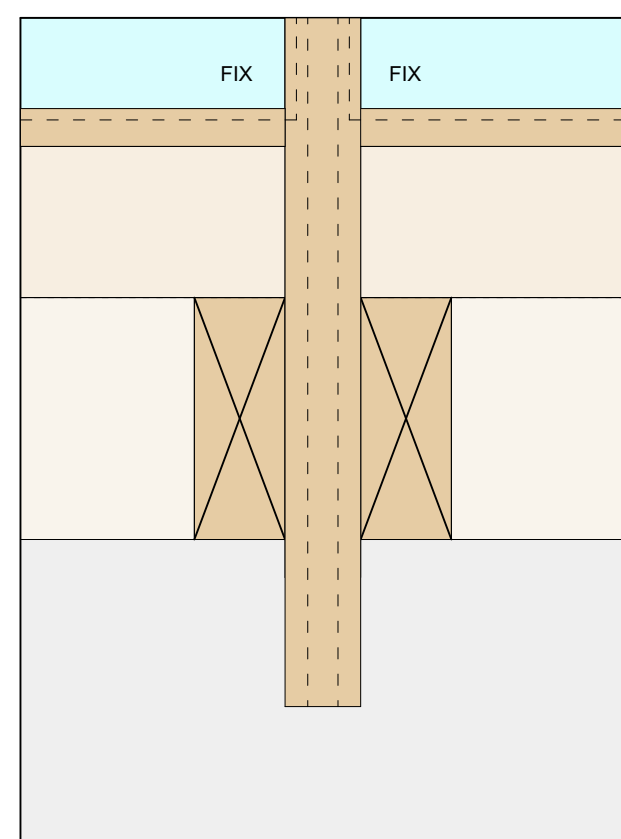
VISTA ESTERNA



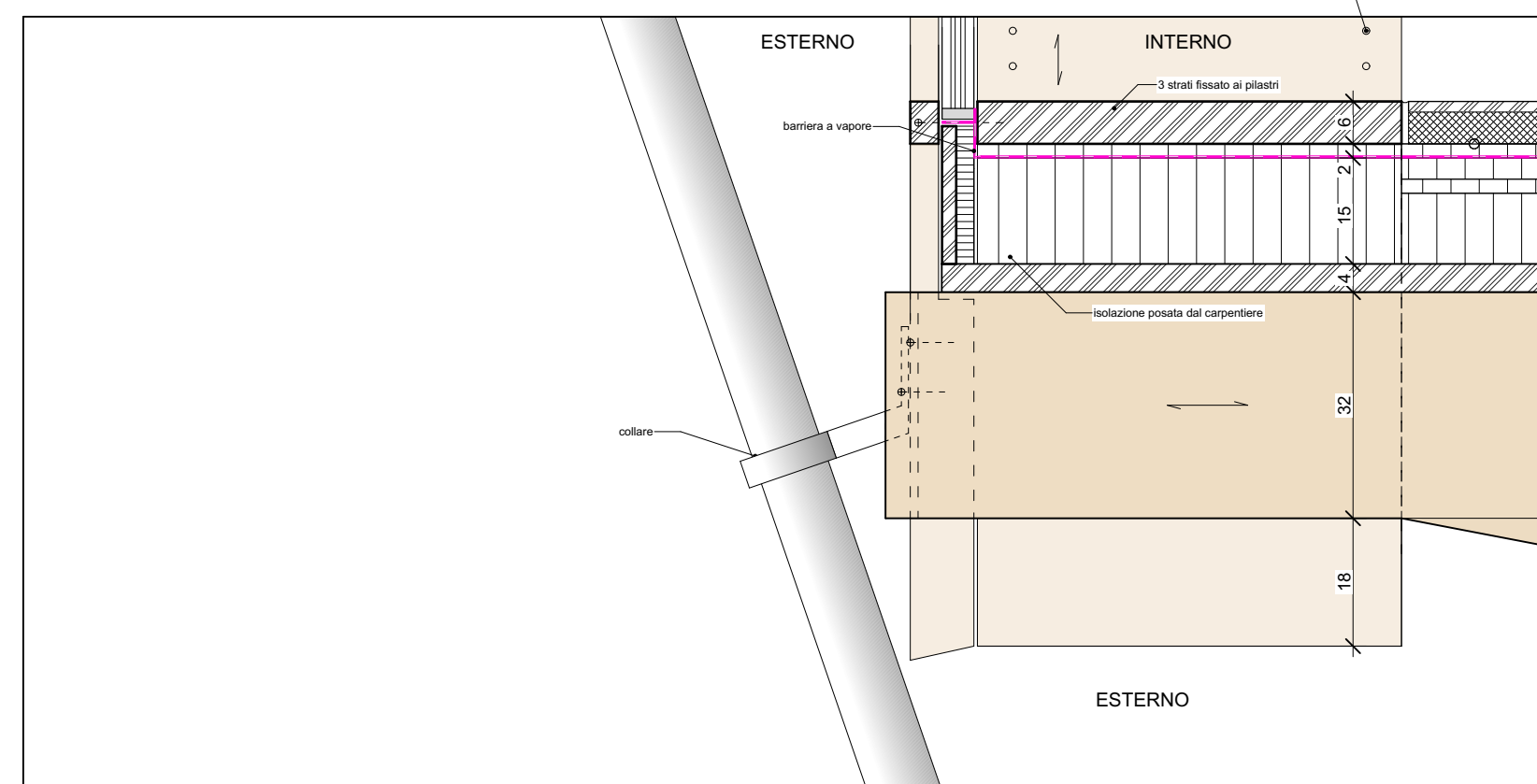
SEZIONE C-C



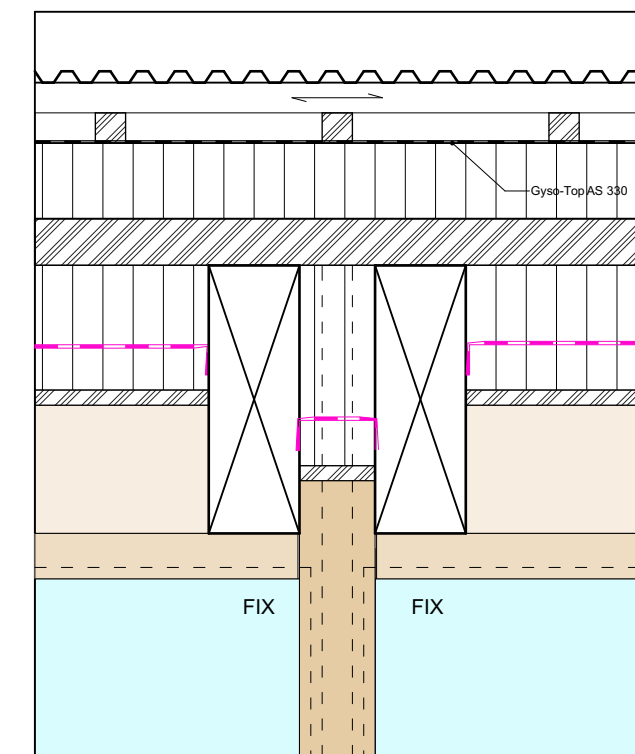
PIANTA



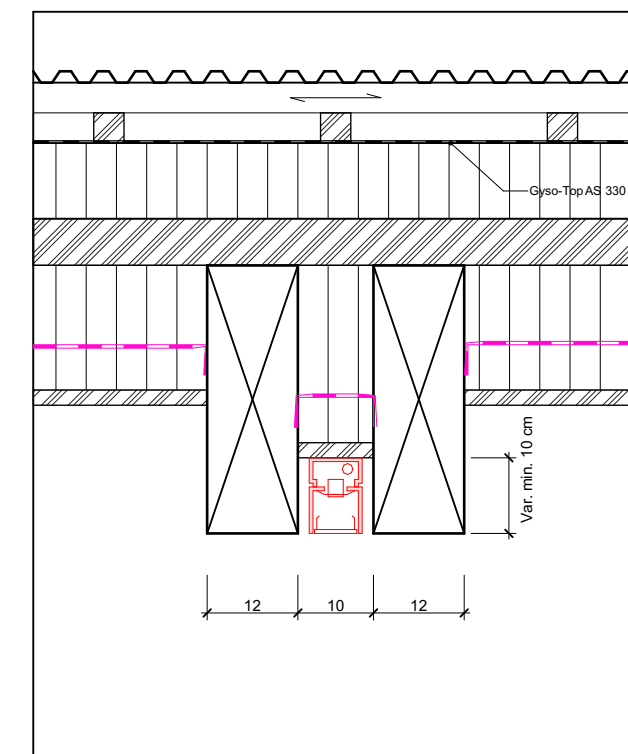
VISTA ESTERNA



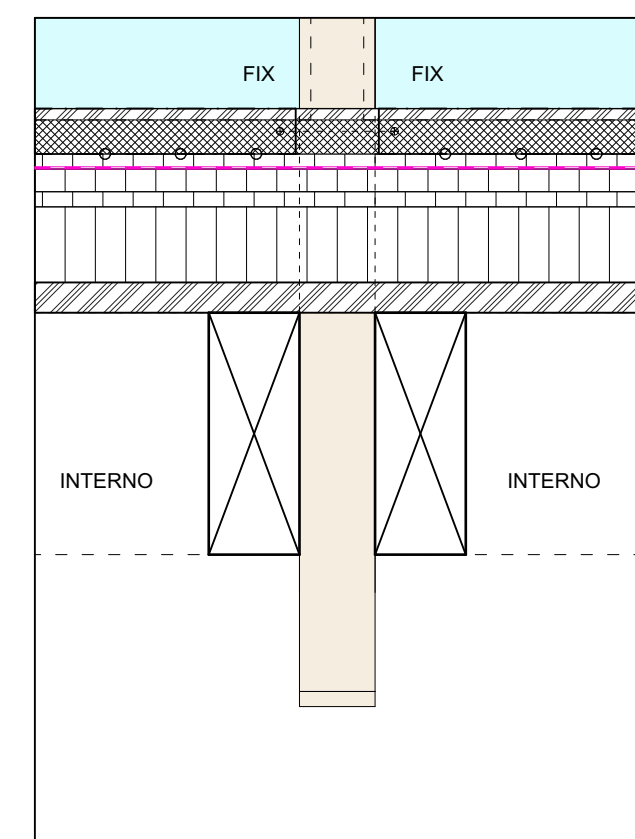
SEZIONE C-C



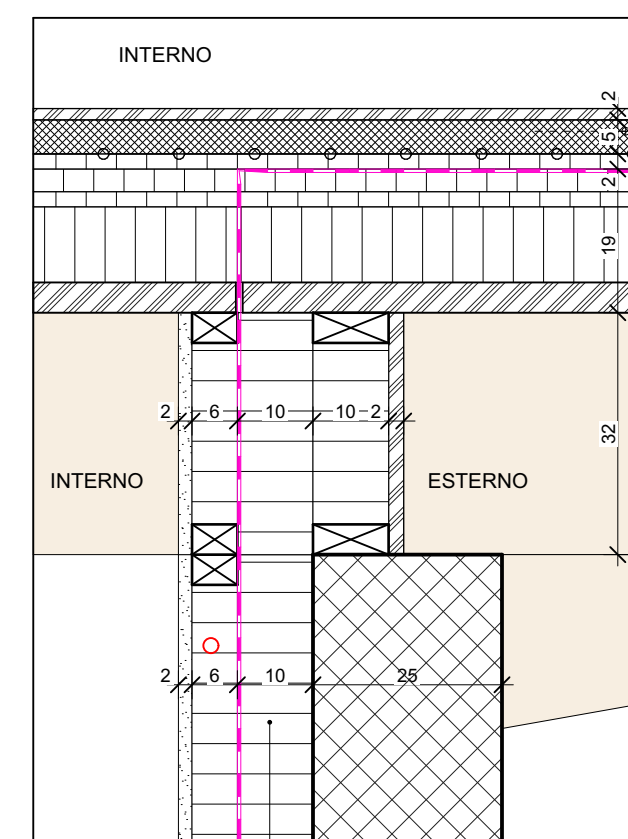
VISTA INTERNA



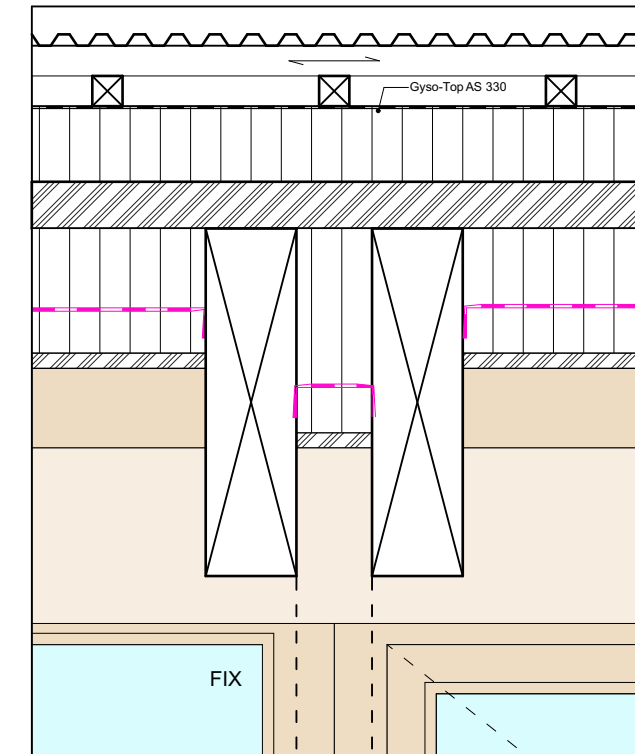
DETTAGLIO CORPO ILLUMINANTE



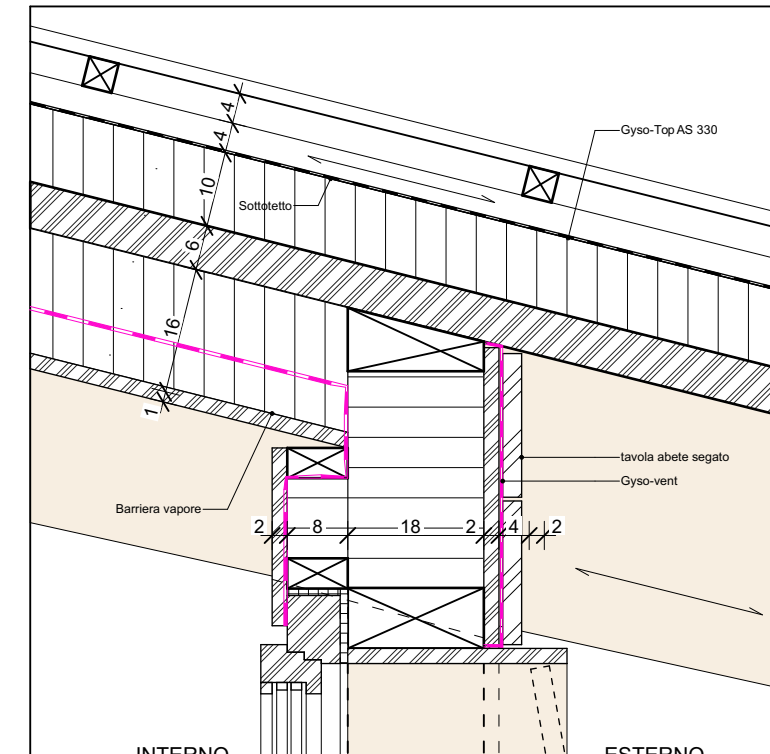
VISTA INTERNA



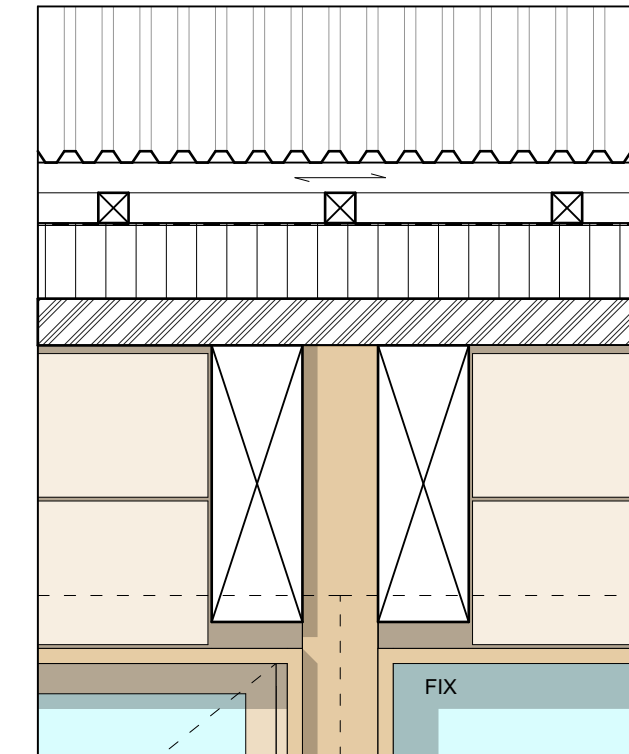
BLOCCO UFFICI - FINESTRE A NASTRO



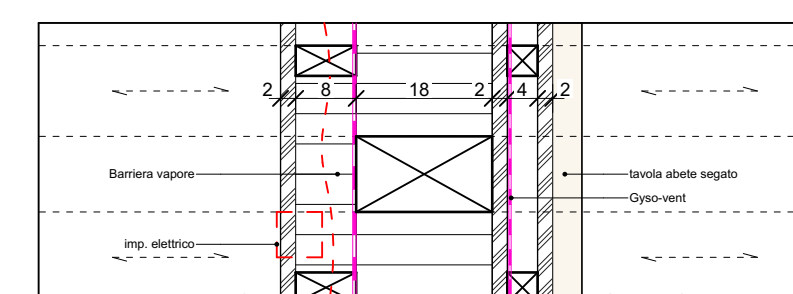
VISTA INTERNA



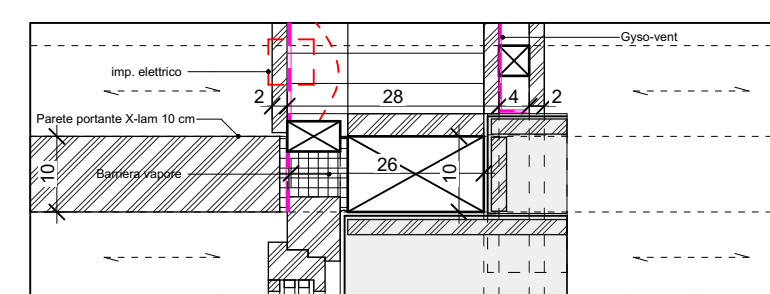
SEZIONE



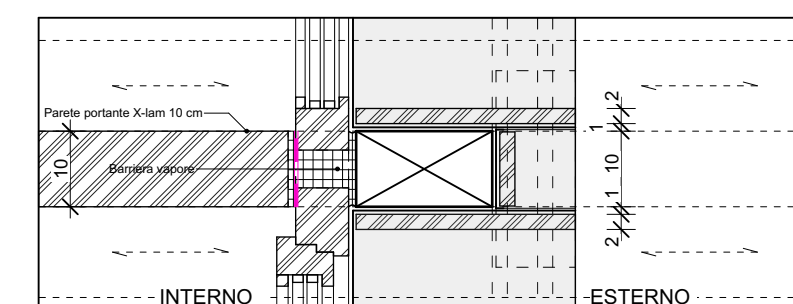
VISTA ESTERNA



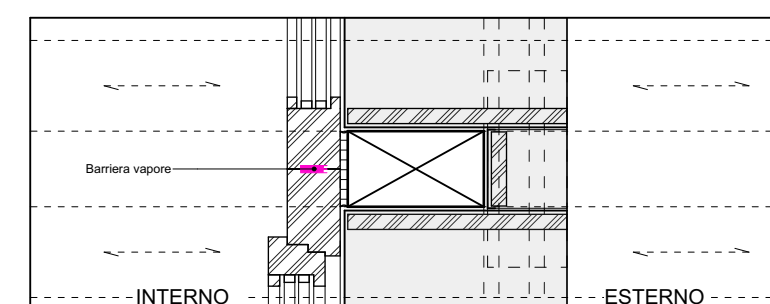
PIANTA - SOTTO FINESTRE A-21/35



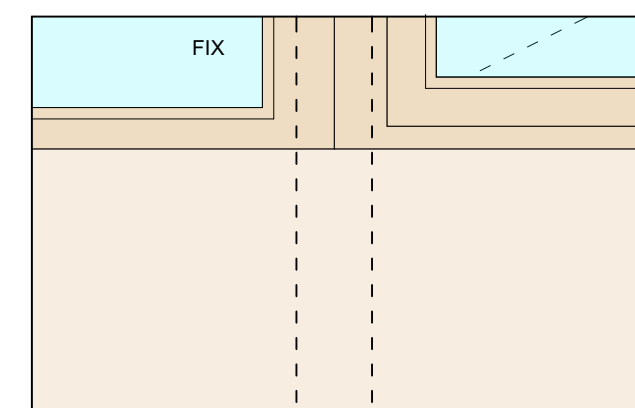
PIANTA - FINESTRA A-22



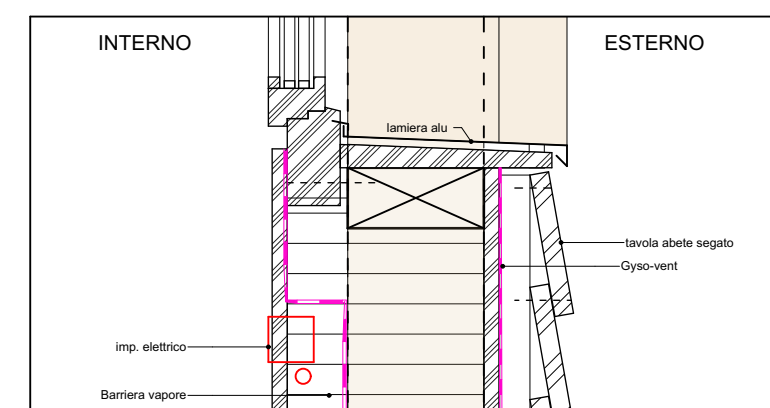
PIANTA - FIN. A-25-28-30-33



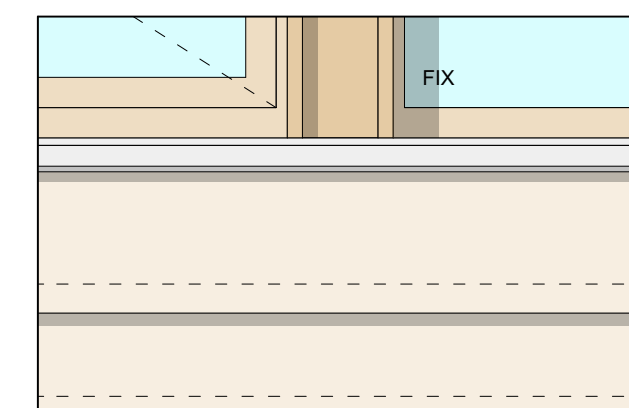
PIANTA - FIN. A-23-24-26-27-29-31-32-34-35



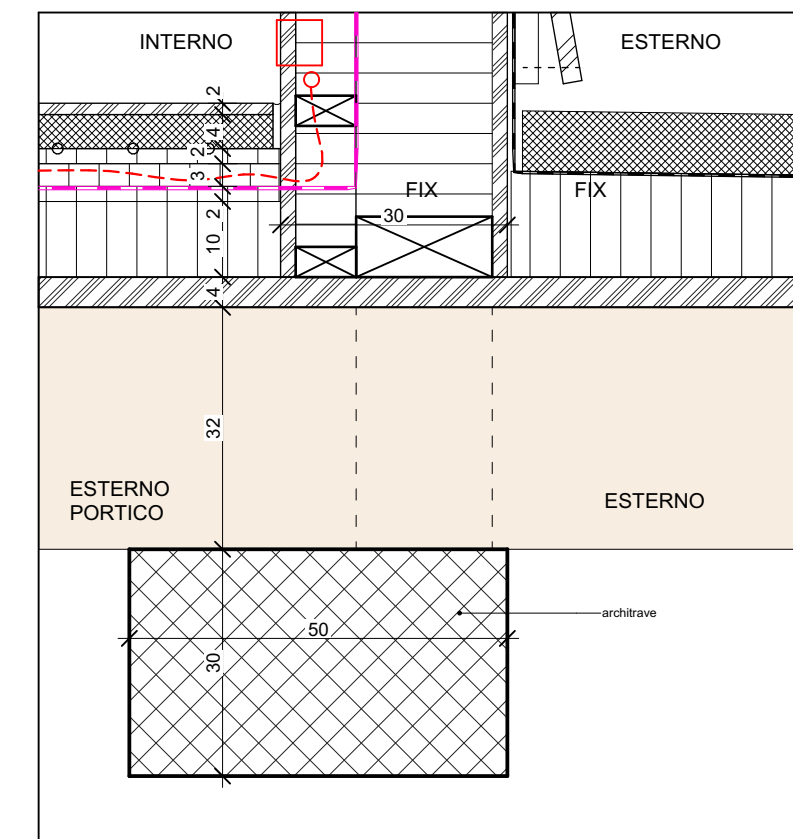
VISTA INTERNA



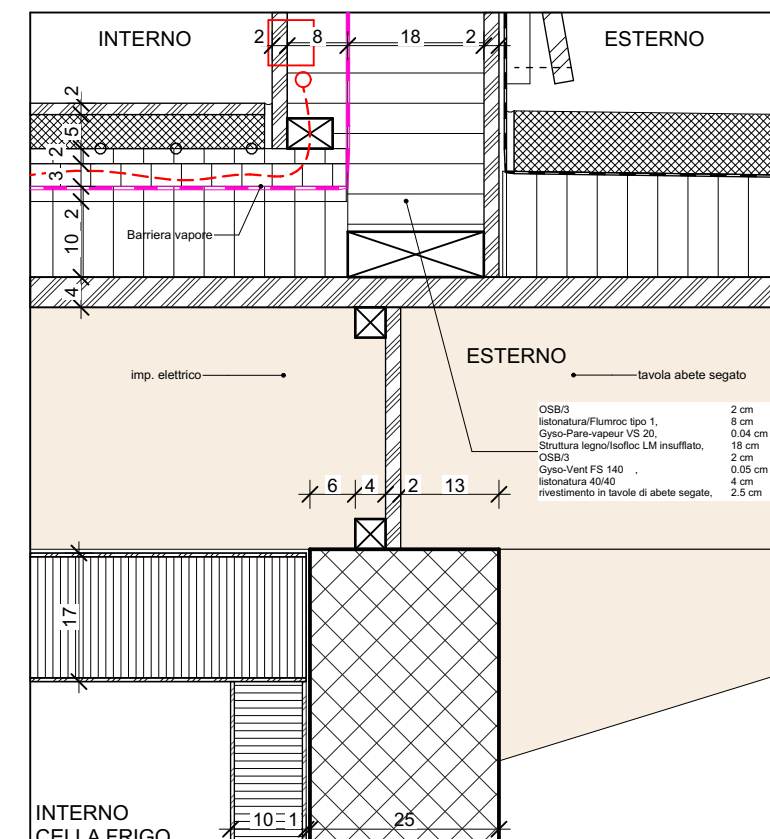
SEZIONE DAVANZALE



VISTA ESTERNA

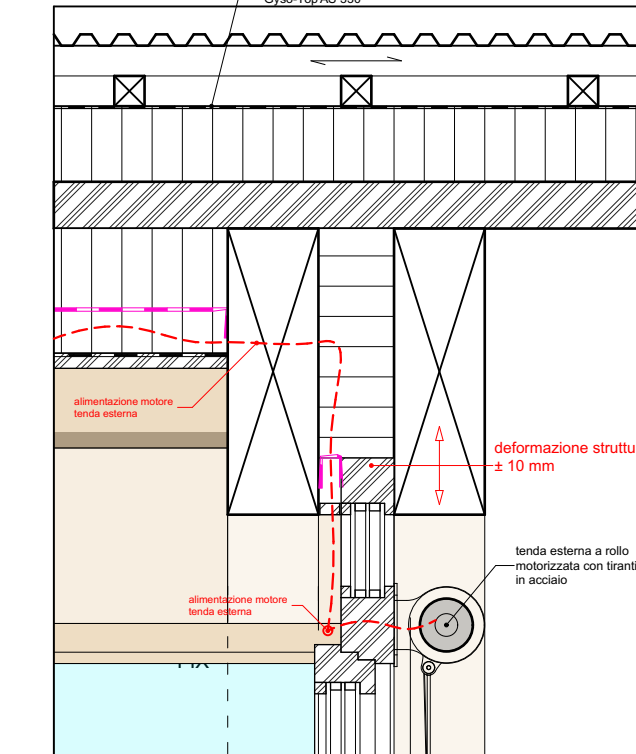


SEZIONE PORTICI

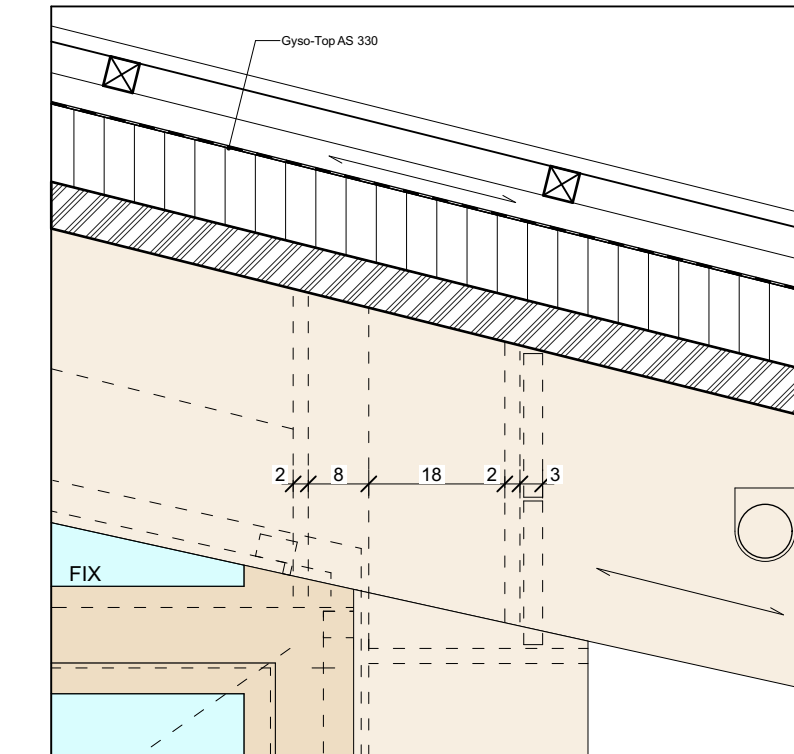


SEZIONE CELLA FRIGO

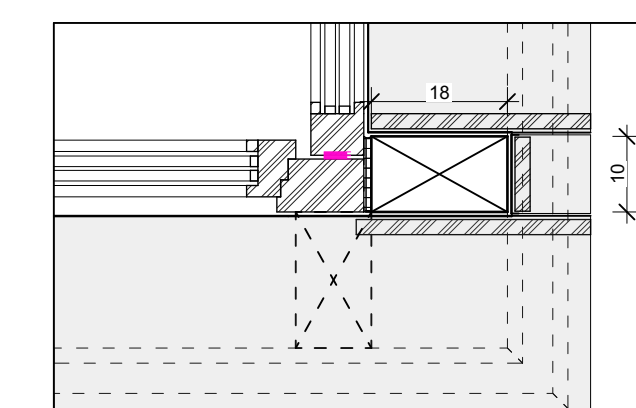
BLOCCO UFFICI - FINESTRA D'ANGOLO



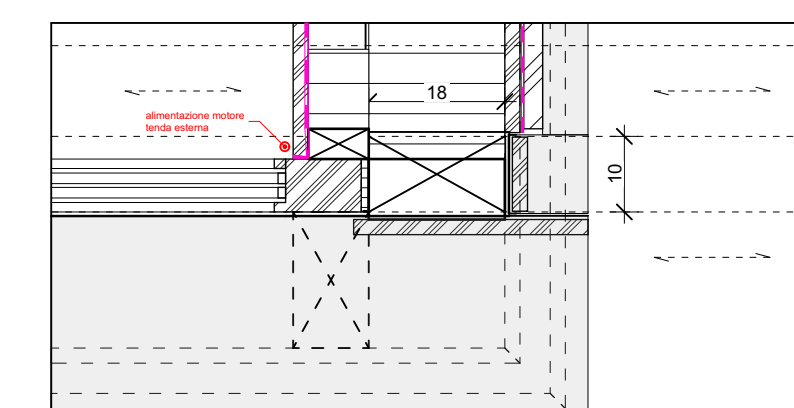
INTERNO



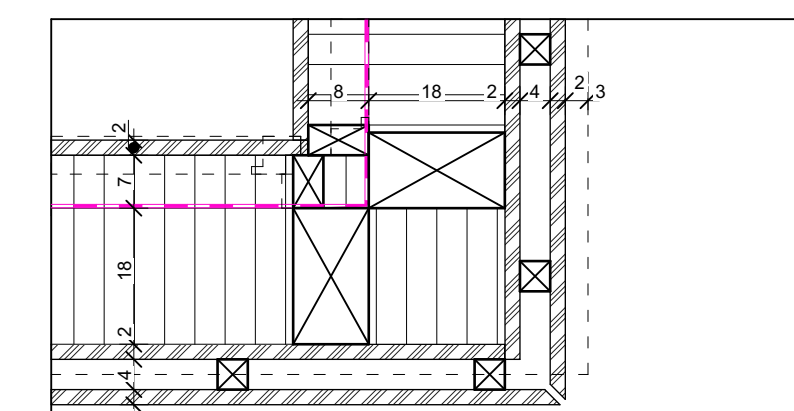
FACCIATA EST



PIANTA - FINESTRA A-35



PIANTA - FINESTRA SUPERIORE A-35



PIANTA - PARETE INFERIORE A-35

Dipartimento delle finanze e dell'economia
Sezione della Logistica
 Via della Carmagnola 7
 6515 Bellinzona
 t: +41 (0)91 814 77 11
 f: +41 (0)91 814 77 19
 e-mail: dfe-si@df.ch
 web: www.s.ch/DFE/DIR/SL

Repubblica e Cantone Ticino

| | | | | | |
|---|---------------------------------|---------|------------|-------------------|---------------|
| Oggetto: STABILE MULTIFUNZIONALE, 6515 GUIDO - DOMANDA DI COSTRUZIONE | | | | Oggetto Nr. E4070 | Piano Nr. 001 |
| Nome Piano DEFINITIVO - NODI SERRAMENTI | | | | mappato 179 | Varianti 0 |
| Nome File | E4070_A1_M2_100_00_010_001_32_0 | Formato | | Scala | Data |
| Disegnato | TZ | Data | 15.02.2021 | 1:10 | 15.02.2021 |
| Corretto | JK | Data | 15.02.2021 | | 0 |

±0.00 = +206.50 m/slm

| | | | |
|---|--|--|--|
| JACHEN KÖNZ ARCHITETTO STUDIO DI ARCHITETTURA SIA / FAS via al nido 3, CH-6900 Lugano, t: 091 950 89 15, f: 091 950 89 16, info@koenz.ch | INGEGNERE CIVILE Project Partners Ltd Consulting Engineers Via al Molino 55 6916 Lugano Grancia | INGEGNERE ELETTRICO ERISEL SA Via Mirasole 8 6500 Bellinzona | INGEGNERE RVCS Marco De Carli Studio d'ingegneria Via Romero 6 6601 Locarno |
|---|--|--|--|

DFE - Divisione delle risorse
 Sezione della Logistica
 Via della Carmagnola 7, 6515 Bellinzona

DT - Divisione dell'ambiente
 Ufficio della caccia e della pesca
 Via Franco Zorzi 13, 6501 Bellinzona

L'ISTANTE

DFE - Divisione delle risorse
 Sezione della Logistica
 Via della Carmagnola 7, 6515 Bellinzona

IL PROPRIETARIO

DFE - Divisione delle risorse
 Sezione della Logistica
 Via della Carmagnola 7, 6515 Bellinzona

JACHEN KÖNZ ARCHITETTO
 STUDIO DI ARCHITETTURA SIA / FAS
 via al nido 3, CH-6900 Lugano

IL PROGETTISTA