

Oggetto	SMP Locarno Residenza Esperanto, Via Streccone 2, Solduno			Oggetto N°	File N°	Piano N°
Nome Piano	Progetto di Fattibilità Pianta piano PT/Lavanderia e Cantina al PC			Mappale	1013	Variante -
Nome File	Disegnato	Data	Formato	Settore	Scala	Data
	DV	10.01.2025	840X594	00	1:50	10.01.25
Approvato	JS					31.01.25 04.02.25 25.02.25 26.02.25
Nome Studio	Logo Studio					

Studio di Architettura e Direzione Lavori
 Arch. José Stefanini - REG-OTIA-DL SUPSI 6592 Sant'Antonino
 T. +41(0)91 827 44 17 stefanini.archi@gmail.com



LEGGENDA:

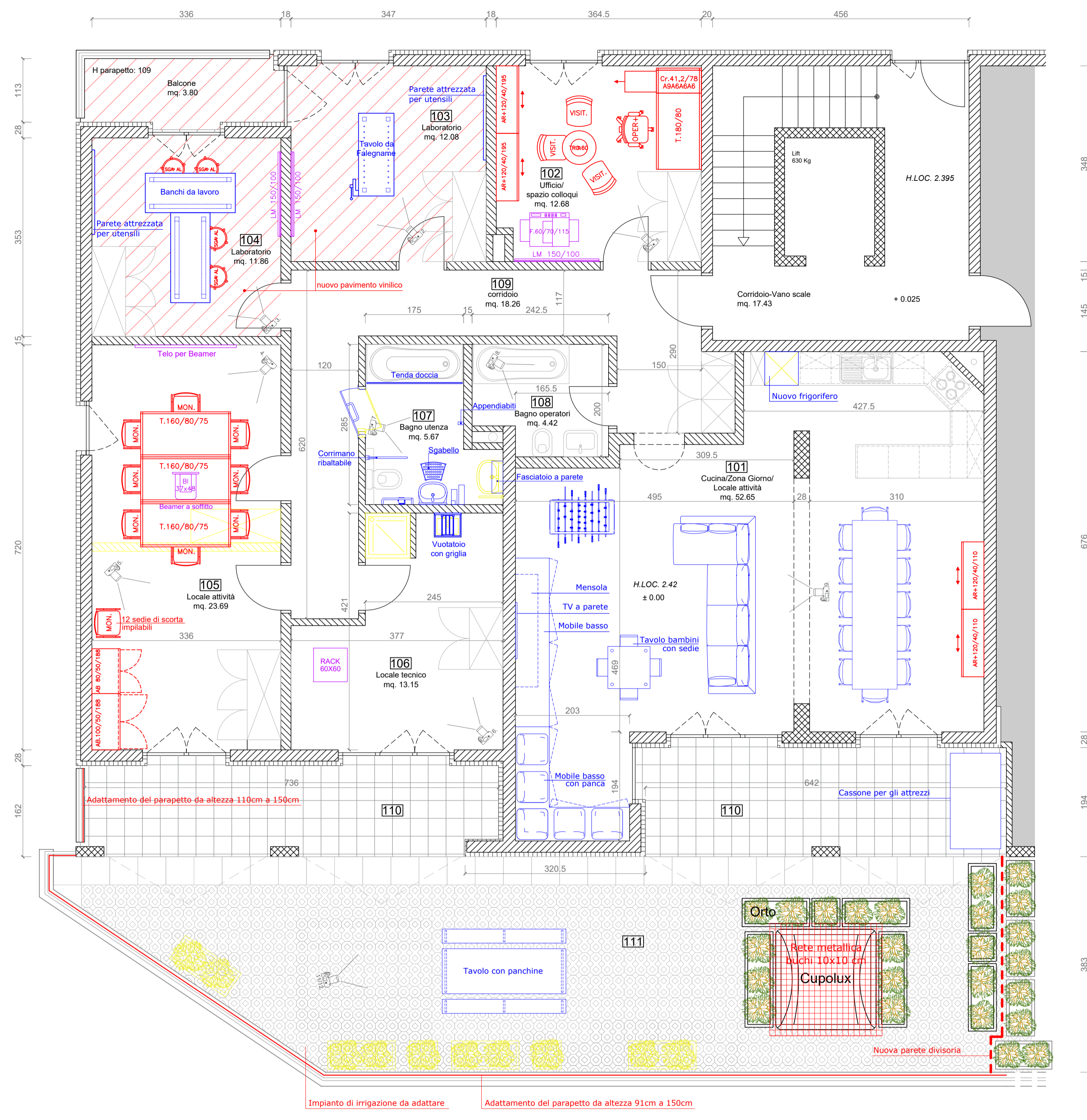
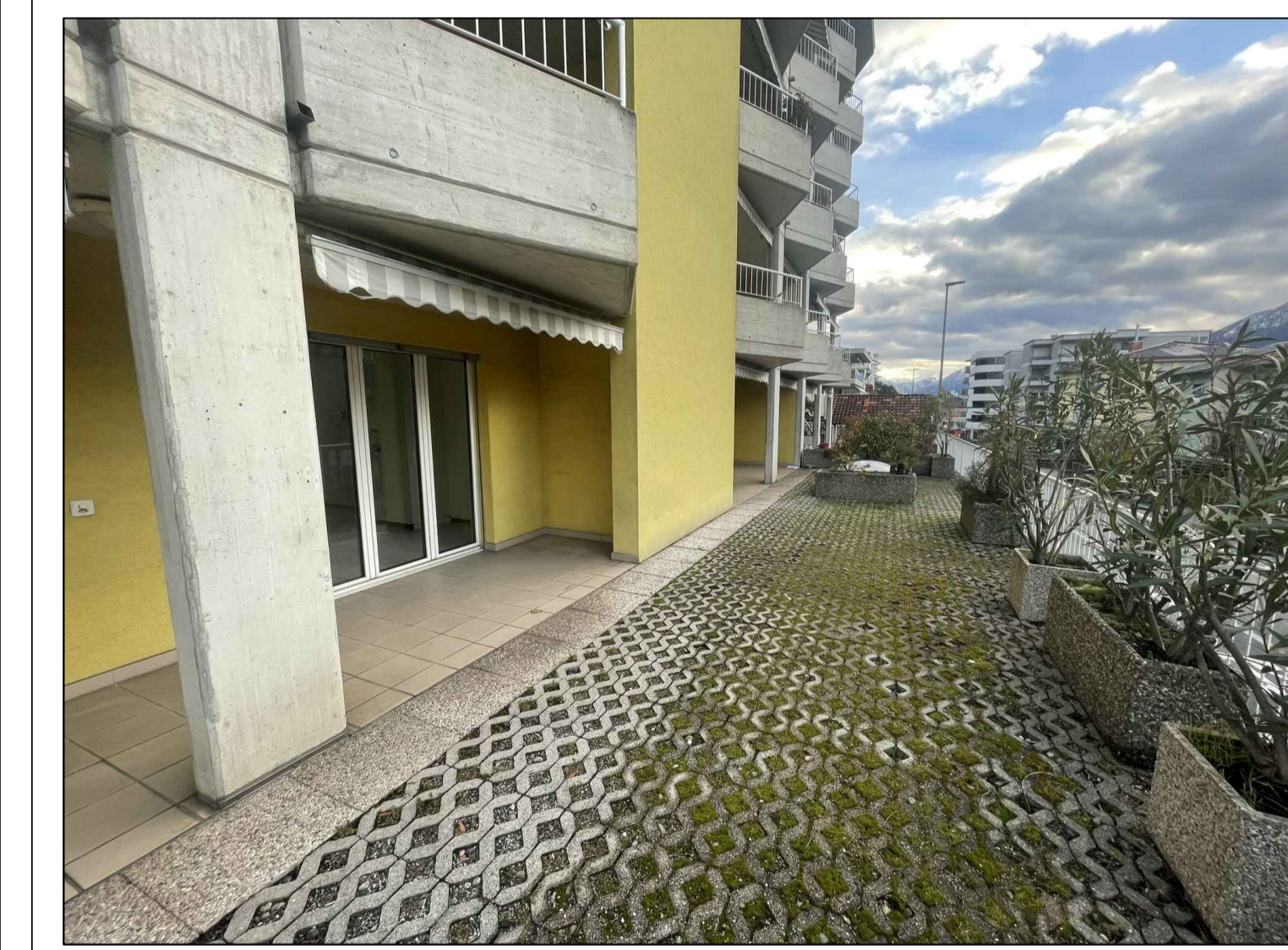
	Calcestruzzo		Arredo nuovo (standard SL)
	Cotto		Arredo da magazzino SL
	Isolazione		Arredo nuovo (non standard SL)
	Nuove costruzioni		CEAP / CSI
	Demolizioni		

LOCALI

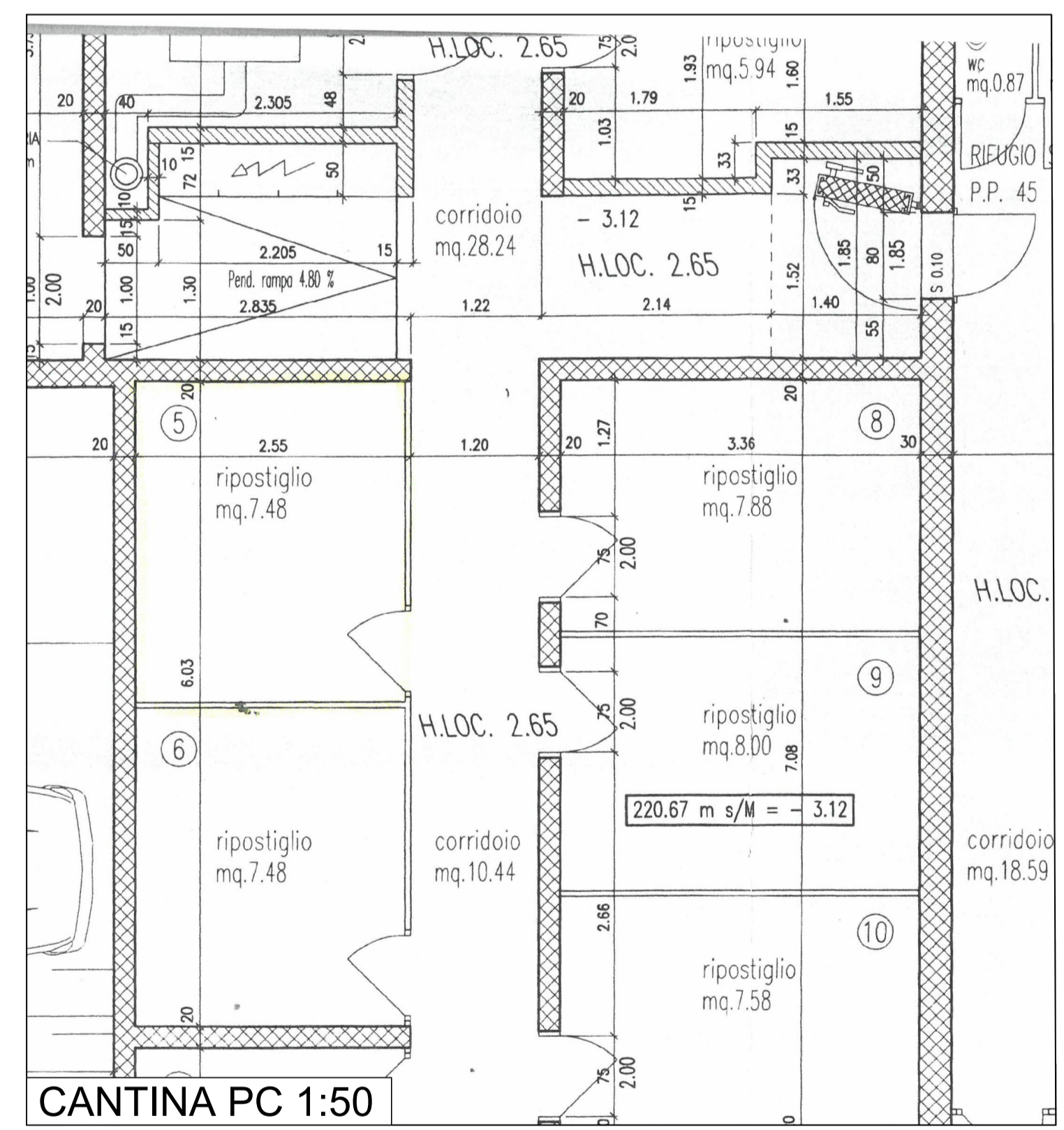
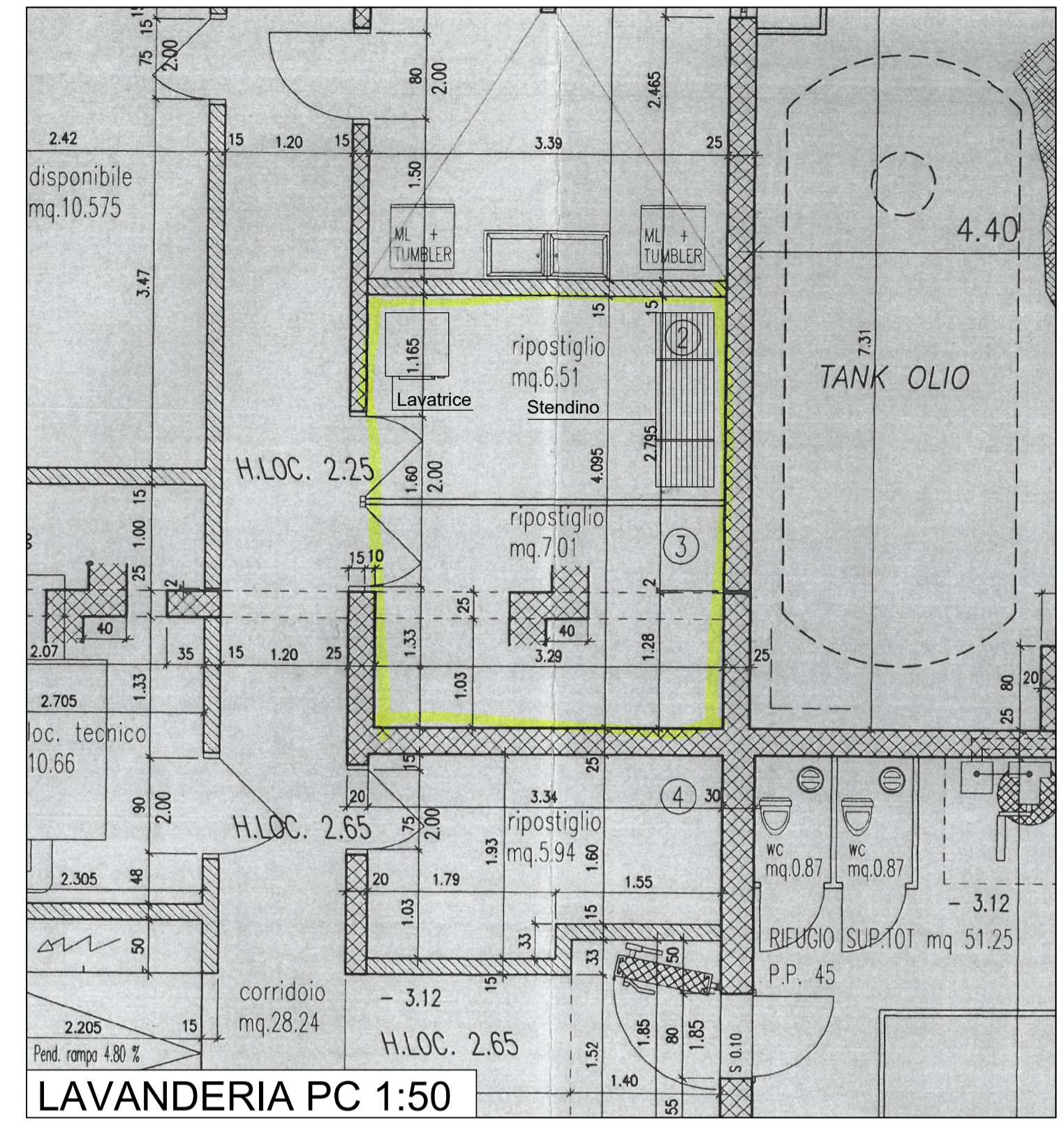
101	CUCINA/ZONA GIORNO/ LOCALE ATTIVITÀ SN mq 52.65	102	UFFICIO/SPAZIO COLLOQUI SN mq 12.68	103	LABORATORIO SN mq 12.08
104	LABORATORIO SN mq 11.86	105	LOCALE ATTIVITÀ SN mq 23.69	106	LOCALE TECNICO SN mq 13.15
107	BAGNO UTENZA SN mq 5.67	108	BAGNO OPERATORI SN mq 4.42	109	CORRIDOIO SN mq 18.26
110	TERRAZZE COPERTE SN mq 25.41	111	TERRAZZA ESTERNA SN mq 57.05		

Sup. TOT. (netta) locali = ca. 136.2 mq
 Sup. TOT. (netta) corridoi = ca. 18.26 mq
 Sup. TOT. (netta) terrazze = ca. 83.4 mq
 Sup. TOT. (netta) locali + corridoi + terrazze = ca. 237.86 mq
 ± 0.00 = 223.79m s.l.m.

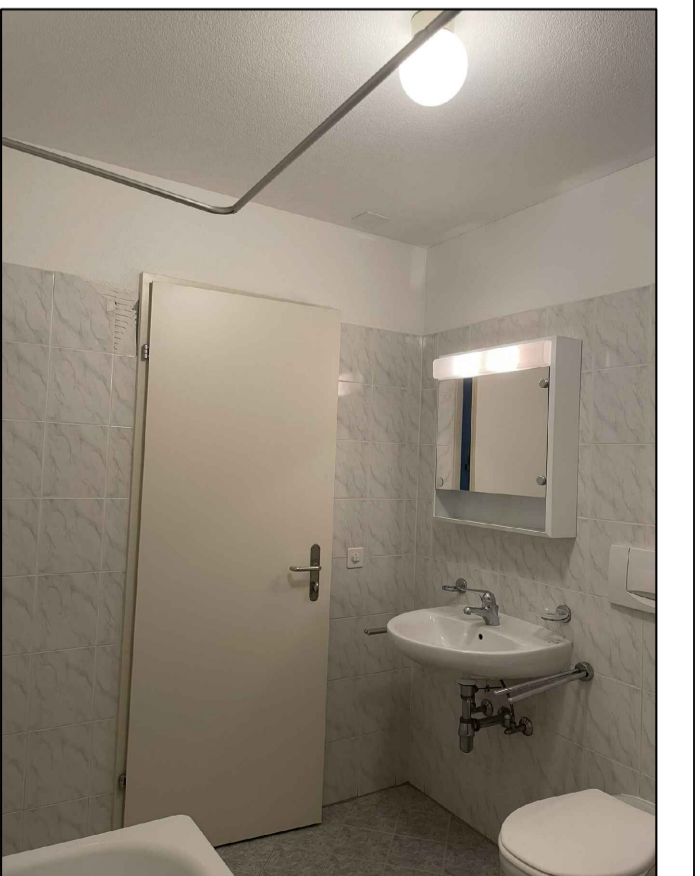
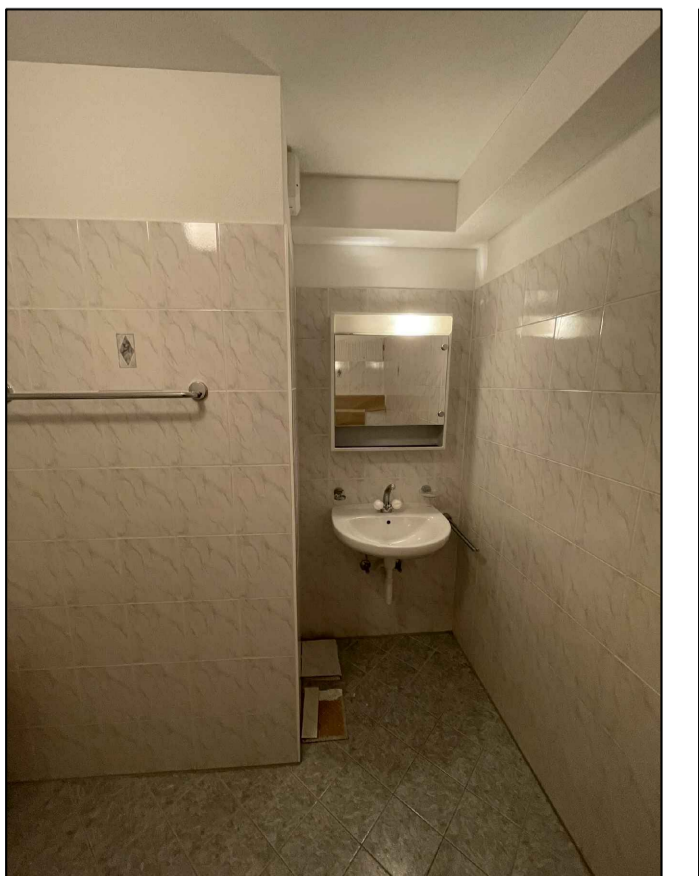
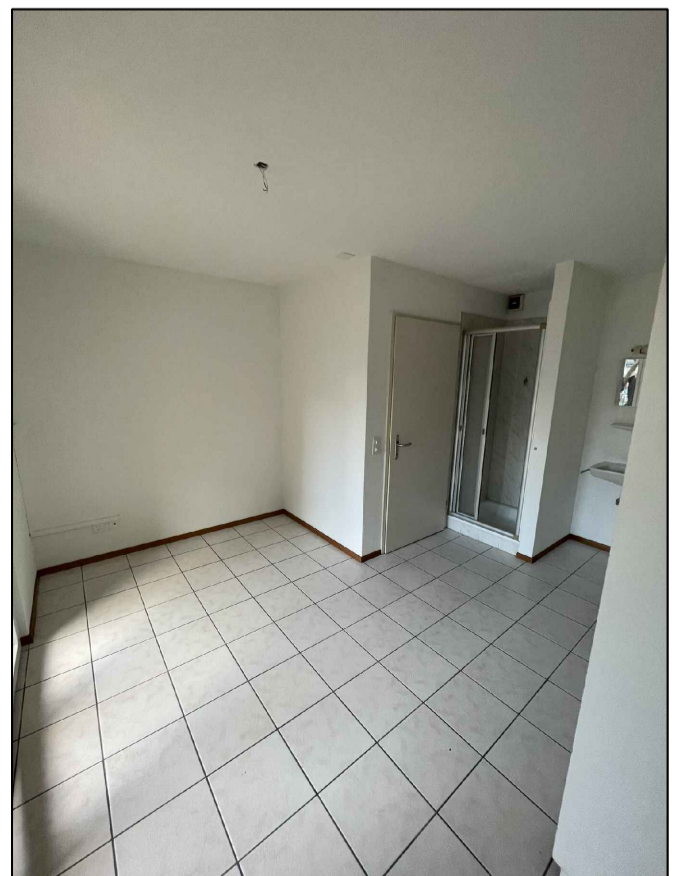
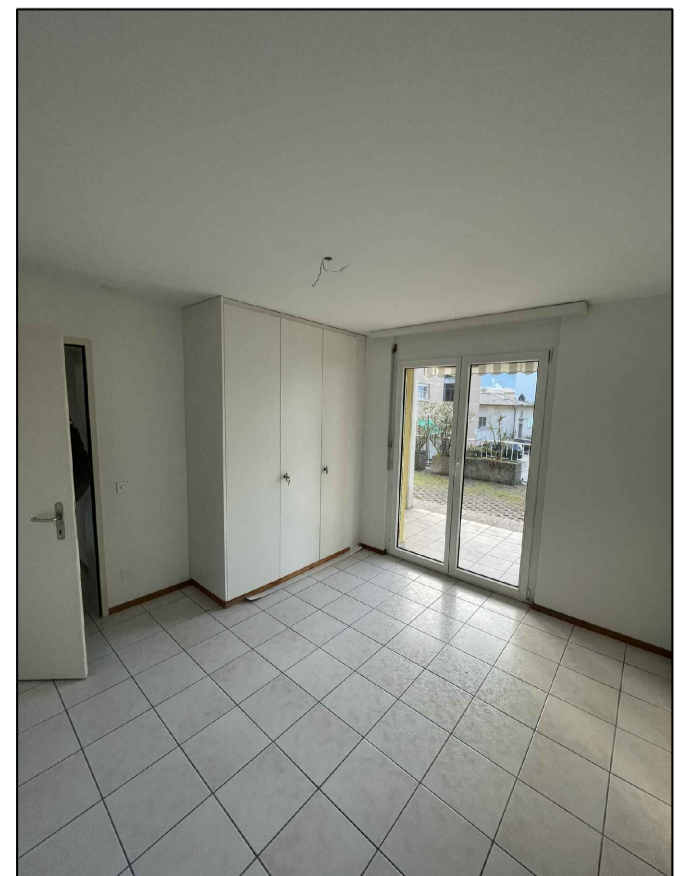
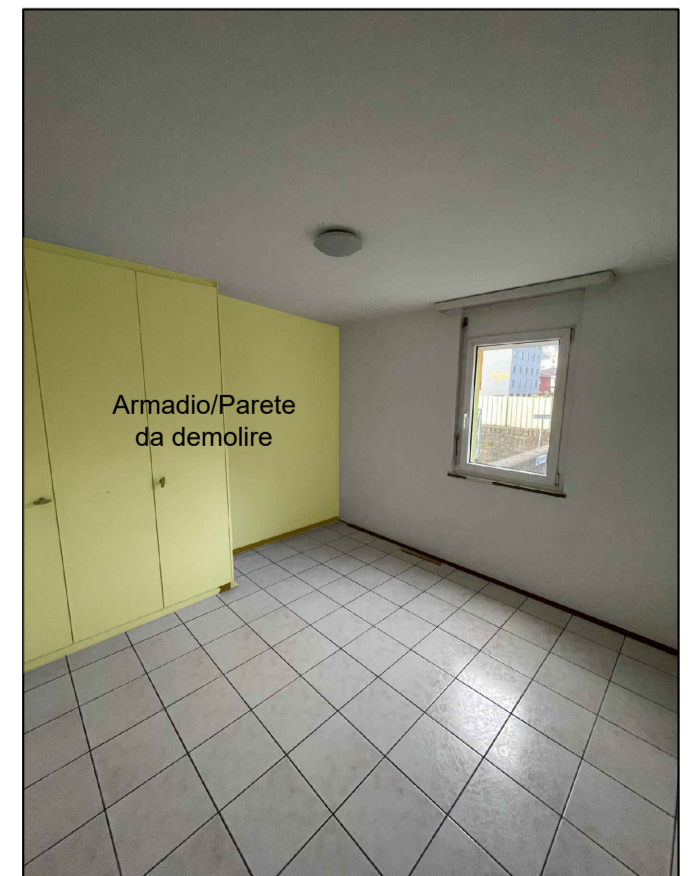
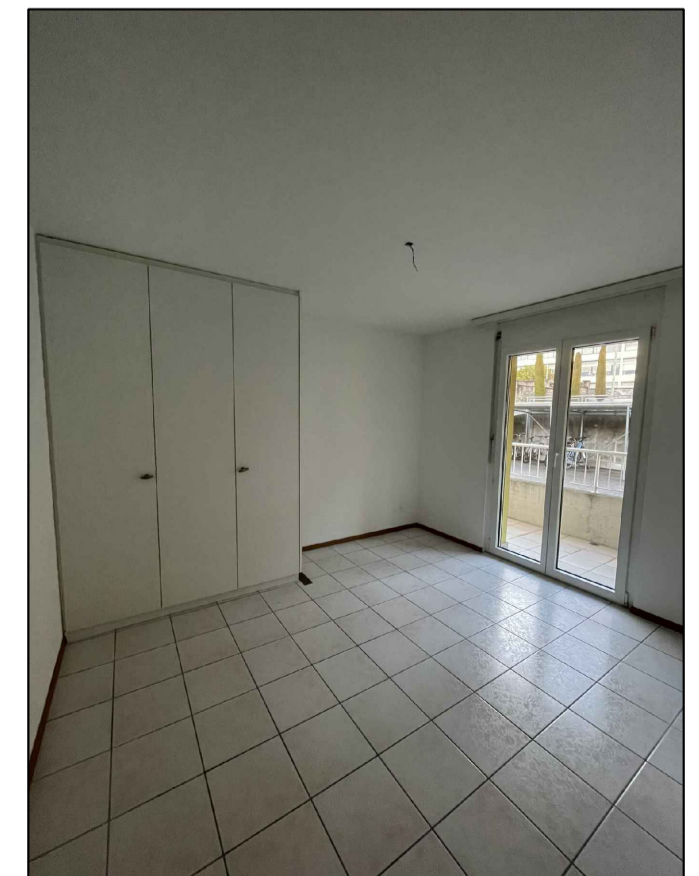
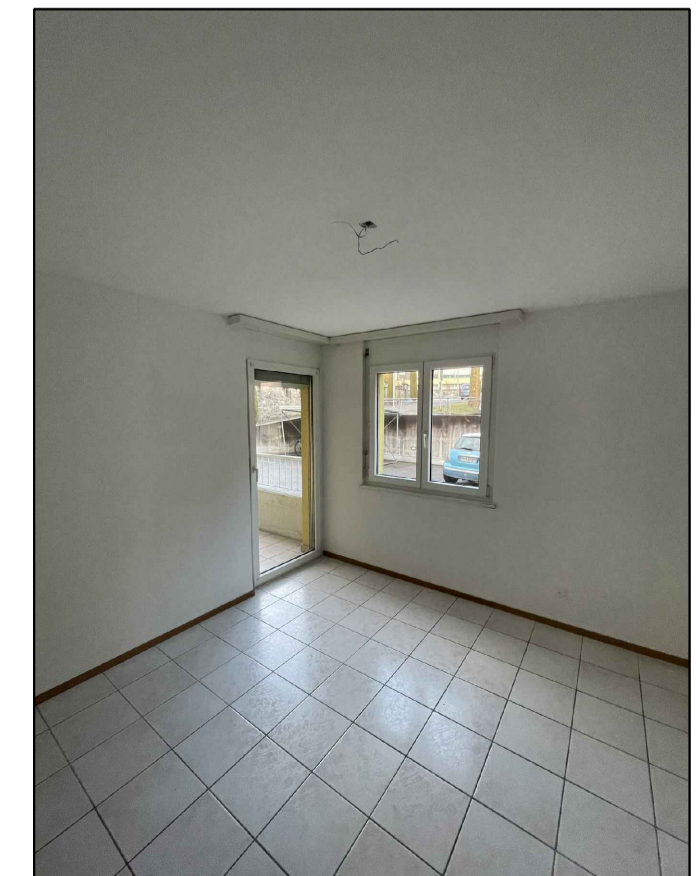
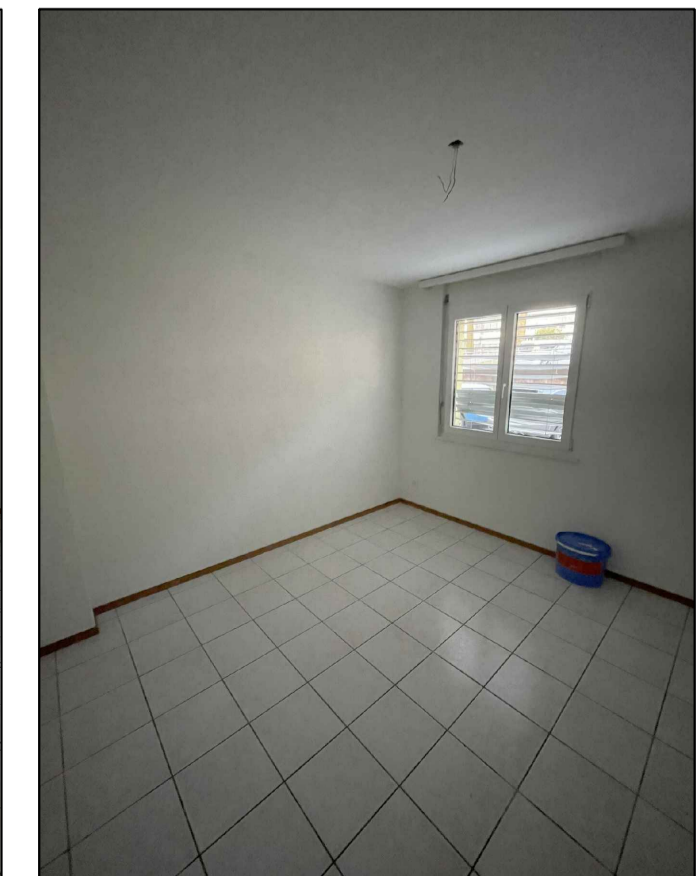
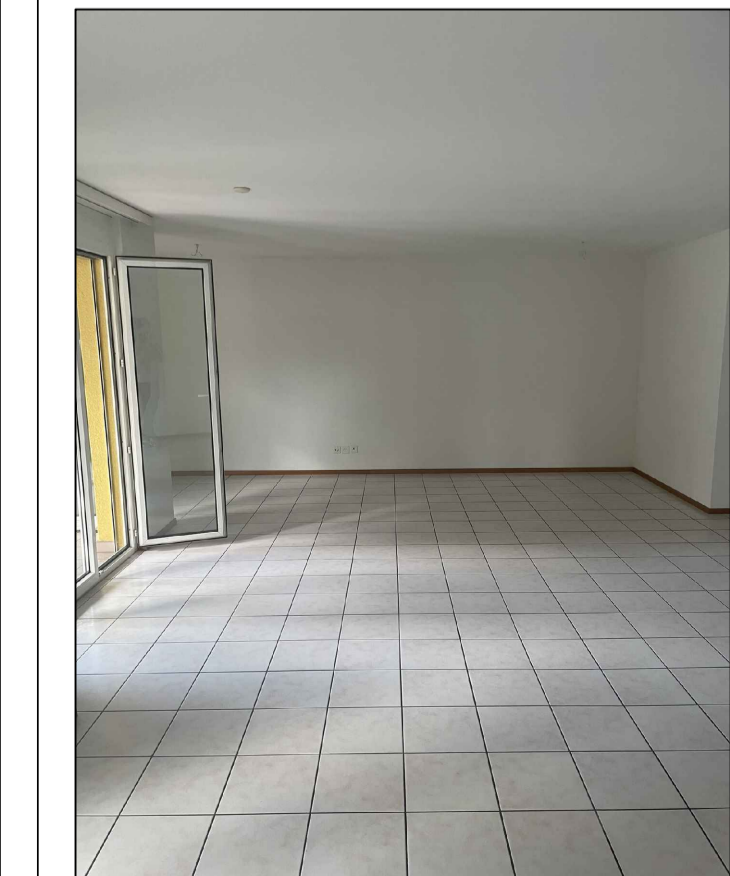
h locali = 2.42 m
110 111 Terrazze coperte + Terrazza esterna



PIANTA PT 1:50



CANTINA PC 1:50



101 Cucina/Zona giorno/
Locale attività

102 Ufficio/spazio colloqui

103 Laboratorio

104 Laboratorio

105 Locale attività

105 Locale attività

106 Locale tecnico

107 Bagno utenza

108 Bagno operatori