

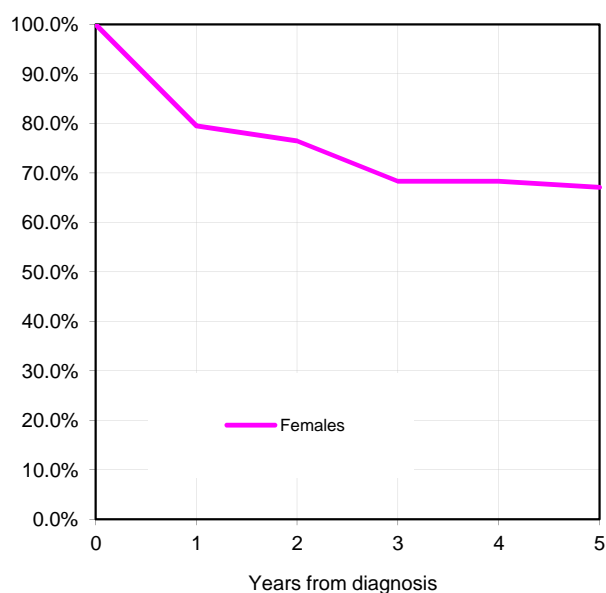
C53 CERVIX UTERI

Ticino Cancer Registry

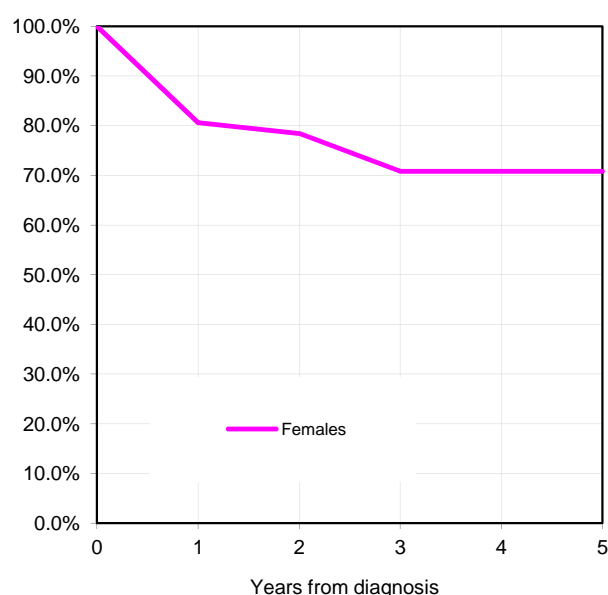
Analysis period: 2011-2015

	Years from diagnosis	Alive at start	Observed Survival	CI 95%	Relative Survival *	CI 95%
Females	1 year	75	79.5%	67.4% - 87.5%	80.6%	68.3% - 88.7%
	2 years	64	76.5%	64.1% - 85.1%	78.4%	65.7% - 87.2%
	3 years	66	68.3%	55.7% - 78.0%	70.8%	57.8% - 80.9%
	5 years	60	67.0%	54.5% - 76.9%	70.8%^	57.8% - 80.9%

Observed Survival



Relative Survival *



* Relative Survival probability was calculated as the ratio of the observed survival rate in the cancer patients under study to the expected survival rate in the general population with similar gender and age distribution (Ederer II method). Relative survival represents a proxy of the cancer-specific survival. The *period* approach was used to derive more up-to-date relative survival estimates (follow-up period window= 01.01.2011-31.12.2015).

^ For international comparison consider the 5-yr age-standardized relative survival probability rate (Corazziari I. et al., EJC 2004): (M&F) 76.5% (CI 95%: 67.5% - 86.8%).