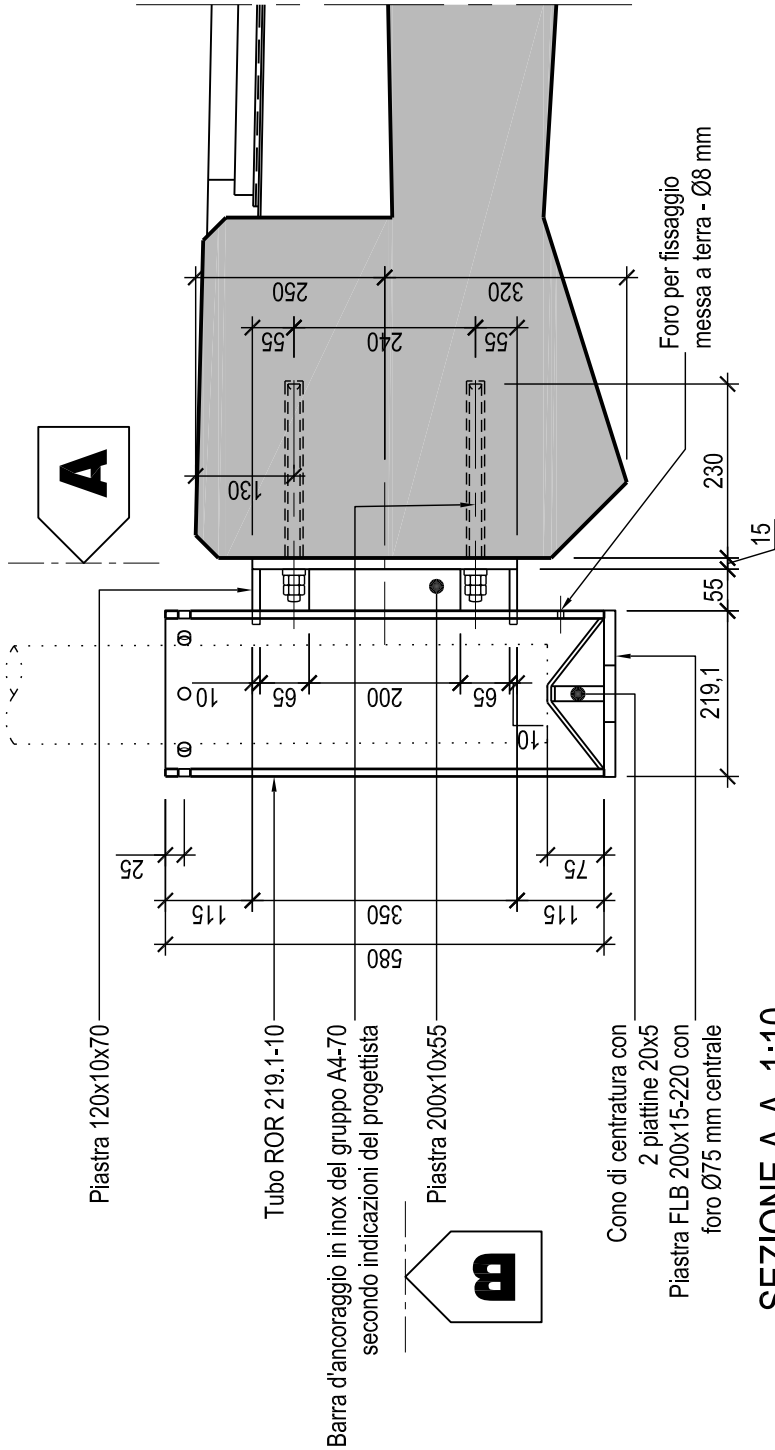
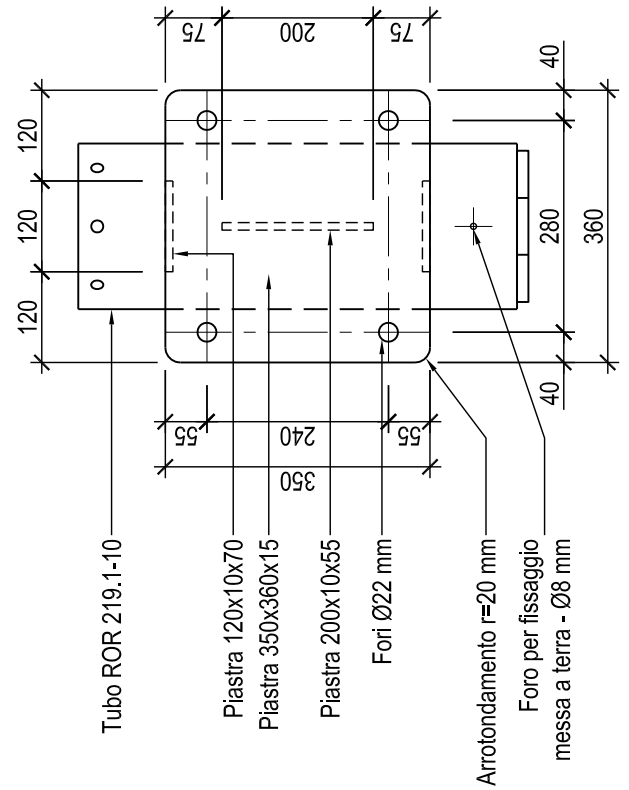


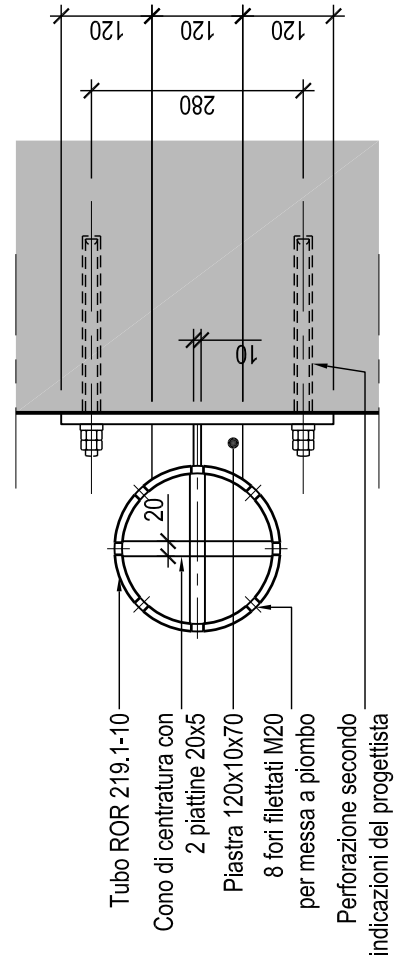
VISTA 1:10



SEZIONE A-A 1:10



SEZIONE B-B 1:10



Zincatura secondo EN ISO 1461



Dipartimento del territorio - Divisione delle costruzioni
via F. Zorzi 13 - Casella Postale 2170 - 6501 BELLINZONA

2.301

Data: 08.06.2005

Fissaggio candelabro fino H=10 m

Mod. : 23.12.2008

Dis. : M.Ge.

Resp. : FM

Contr. :

Dettaglio

Scala : 1:10